

TRANSPLANT: A TEAM APPROACH

March 17,2020

Robin Taylor MSW/LSW

DaVita Hackensack Dialysis Facility 05655

TEAMWORK MAKES THE DREAM WORK!



- ▶ Located in the suburban township of Maywood New Jersey in the County of Bergen. Less than 14 miles away from New York City New York.
- ▶ 213 patients.
- ▶ Renal replacement/modality offered: in-center hemodialysis (34 in-patient stations, 3 isolated pediatric stations, 2 isolated stations), peritoneal dialysis and nocturnal dialysis (9 stations). Patients referred for kidney transplant.
- ▶ 34 in-patient stations. Monday, Wednesday, Friday 4 shifts, Tuesday, Thursday and Saturday 3 shifts, nocturnal dialysis held Sunday, Tuesday and Thursday nights.

DAVITA HACKENSACK DIALYSIS

- ▶ In 2018, 15 patients transplanted.
- ▶ 10 hemodialysis patients and fewer than 10 peritoneal dialysis patients received kidney transplants.
- ▶ In 2019, 15 patients received kidney transplants.
- ▶ 11 hemodialysis patients and fewer than 10 peritoneal dialysis patients received kidney transplants.

KIDNEY TRANSPLANT METRICS

- ▶ To educate staff on the importance of taking a team approach in the education of patients.
- ▶ To educate staff on the importance of providing timely education to patients.

OBJECTIVES

- ▶ Registered nurses (RN), patient care technicians (PCT) and social workers (SW) receive transplant education via Star Learning computer tool. DaVita transplant smart program.
- ▶ RN's PCT's and SW receive additional education at Annual Transplant Designee Symposiums.

TRANSPLANT EDUCATION RN'S AND PCT'S

- ▶ Collaborates with facility social workers/interdisciplinary team as needed.
- ▶ Educate patients on kidney transplant.
- ▶ Work in collaboration with patients transplant facility.

TRANSPLANT DESIGNEE RN AND PCT

A decorative graphic consisting of several parallel white lines of varying lengths and orientations, located in the bottom right corner of the slide.

RN TRANSPLANT DESIGNEE WORKSHEET

DaVita Hackensack Transplant active waiting list month/year

TTS	Facility	Facility	Facility
1 st shift blue			
1 st shift yellow			
2 nd shift blue			
2 nd shift yellow			
3 rd shift blue			
3 rd shift yellow			
5 ^h yellow Noc			

DaVita Hackensack Transplant active waiting list month/year

PD	Facility	Facility	Facility

List transplant center name, address, phone number, fax number, and contact person information here.

- ▶ Label transplant tubes/forms, process collected specimens from facility RN's PCT's and ships specimens via UPS/Fed Ex.
- ▶ Maintain facility records.
- ▶ Attend Annual Kidney Transplant Surgeon Designee Symposiums (Initial and Re-certification for RN's).
- ▶ Assists patients with annual re-evaluation process.

TRANSPLANT DESIGNEE RN AND PCT

A decorative graphic consisting of several parallel white lines of varying lengths and orientations, located in the bottom right corner of the slide.

- ▶ Collaborates with kidney transplant facilities/DaVita Kidney Transplant Designee RN and PCT.
- ▶ Educate patients on kidney transplantation.
- ▶ Assess for depression and provide counseling.
- ▶ Assists patients with annual re-evaluation process/compliance.

SOCIAL WORKERS

A decorative graphic consisting of several parallel white lines of varying lengths and orientations, located in the bottom right corner of the slide.

- ▶ Assist patient through the transplant process.
- ▶ Attend Annual Kidney Transplant Surgeon Designee Symposiums (Initial and Re-certification for Social Workers).

SOCIAL WORKERS DESIGNEE
CONTINUED

A series of white, parallel diagonal lines of varying lengths and thicknesses, extending from the bottom right corner towards the top right of the slide.

PATIENT CENTERED CARE AND EDUCATION APPROACH



INTERVALS OF PATIENT EDUCATION



- ▶ **Initial intake**
- ▶ **Within 30 days social worker provides transplant education**
- ▶ **90 day assessment**

**INTERVALS OF PATIENT EDUCATION
CONTINUED**

A decorative graphic consisting of several parallel white lines of varying lengths and orientations, located in the bottom right corner of the slide.

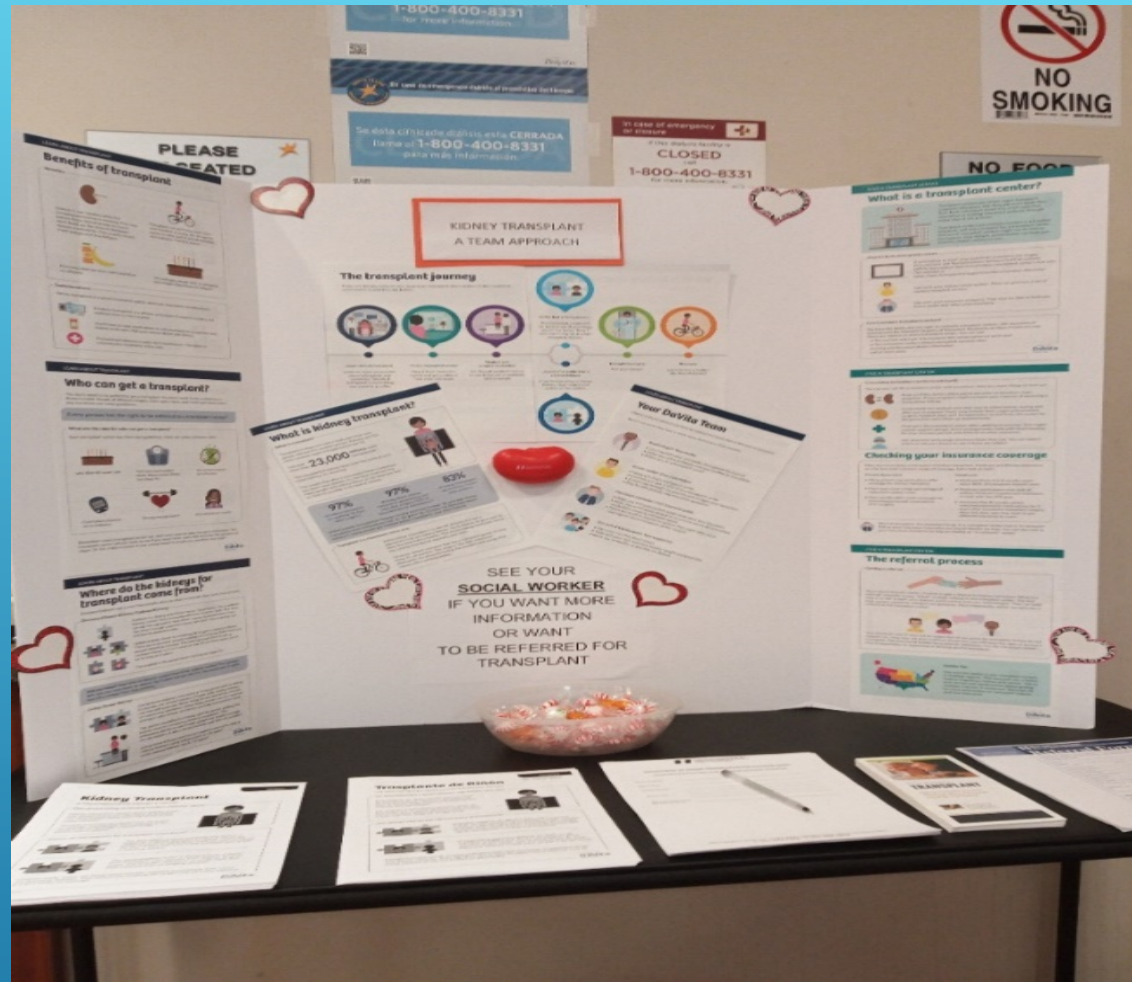
- ▶ Semi Annual Assessment
- ▶ Annual assessment

INTERVALS OF PATIENT EDUCATION
CONTINUED

A decorative graphic consisting of several parallel white lines of varying lengths, slanted upwards from left to right, located in the bottom right corner of the slide.

- ▶ Patients interested in transplant can be discussed/reviewed at weekly plan of care meetings as needed.
- ▶ Weekly core team meetings attended by IDT.
- ▶ Transplant is reviewed for hemodialysis-nocturnal and peritoneal dialysis patients monthly at Facility Health Record meetings or Quality Assurance and Performance Improvement meetings.

COLLABORATION WITH INTER-
DISCIPLINARY STAFF



LOBBY DAYS

- ▶ Patients receive annual DaVita modality/transplant education.
- ▶ Social workers are DaVita kidney smart modality educators.
- ▶ Social workers receive support from In-house social work calls from divisional/regional social workers.

EDUCATION RESOURCES

- ▶ 1 Registered Dietitian is a DaVita kidney smart educator (provides pre-CKD education).
- ▶ Patients and staff have access to additional information/education from the Quality Insight Renal Network 3 website.
- ▶ Staff have access to Quality Improvement Activity Learning and Action Network calls.

EDUCATION RESOURCES CONTINUED:

A decorative graphic consisting of several parallel white lines of varying lengths, slanted upwards from left to right, located in the bottom right corner of the slide.

TEAMWORK WITH THE GOAL OF TRANSPLANTATION



Questions?

THANK YOU FOR YOUR SERVICE TO
OUR RENAL COMMUNITY!

