



B. Detailed Goal Activity Tables

**PROVIDER CODES LIST FOR CODED
TABLES AND CHARTS**

New Jersey	
310001	Hackensack University Medical Center
310002	Newark Beth Israel Medical Center
310008	Holy Name Hospital
310012	Valley Hospital
310014	Cooper Medical Center Camden
310015	Morristown Memorial Hospital
310017	Chilton Memorial Hospital
310019	St Joseph's Medical Center
31001F	VA Medical Center East Orange
310025	Bayonne Hospital
310027	Trinitas Hospital
310029	Our Lady of Lourdes Medical Center
310032	Bridgeton/South Jersey Hospital
310034	Riverview Medical Center
310038	Robert Wood Johnson University Hospital
310047	Shore Memorial Hospital
310052	Ocean County Medical Center Brick
310054	Mountainside Hospital
310064	Atlantic City Medical Center
310073	Jersey Shore Medical Center
310074	Jersey City Medical Center
310075	Monmouth Medical Center
310076	St Barnabas Medical Center (old number)
310077	Passaic Beth Israel Medical Center
310083	East Orange General Hospital
310086	Kennedy Washington Township
310092	Helene Fuld/Capital Health System
310096	St Michael's Medical Center
312501	BMA Irvington
312502	BMA Jersey City
312503	BMA Pine Brook
312504	BMA Trenton
312505	BMA Newark University Dialysis Center
312506	BMA Hillside
312508	Gambro Burlington County
312509	RCG Renal Institute Central Jersey Toms River
312510	Gambro Holmdel
312512	DaVita Cape May Courthouse
312513	Gambro Cherry Hill
312514	RCG Renex Salem
312515	BMA South Plainfield
312516	BMA Princeton
312517	Gambro Freehold AKC
312518	BMA Colonia
312519	FMC Morris Home
312520	Gambro Neptune AKC
312521	Gambro Delran

312522	Gambro East Orange AKC
312523	Pascack Valley/Booth Dialysis Center
312524	FMC Holy Name Home
312525	DCI North Brunswick
312527	Belmont Court Ewing
312528	Gambro Summit
312529	BMA Hoboken
312530	DaVita Bridgewater
312531	IDS North Jersey Lincoln Park
312532	RCG St Barnabas Union
312533	RCG Renex Orange
312534	RCG Renex Woodbury
312535	DaVita Atlantic City
312536	FMC Englewood Dialysis Center
312537	DaVita Atlantic AKC
312538	RCG Southern Ocean County
312539	DCA Manahawkin
312540	Gambro Perth Amboy
312541	Gambro Old Bridge
312542	Union City Renal Center
312543	Dialysis Associates Northern New Jersey
312544	DCI Freehold
312545	KRU Jersey City AKC North Bergen
312546	RCG Renex Bloomfield
312547	BMA Phillipsburg
312548	Gambro Burlington County North
312549	BMA Elmwood Park
312550	BMA Kings Court, Flemington
312551	DCA Vineland
312552	Belmont Court Hamilton
312553	RV Passaic
312554	FMC St. Clare's Dialysis Center
312555	DCI St. Peter's
312556	DCI Princeton
312557	RCG Lakewood
312558	Gambro Plainfield
312559	Gambro Edison
312560	Silver Care Dialysis Center
312561	RV Bayonne
312562	DaVita Bricktown
312563	RV Brick
312564	RCG Renex Harrison
312565	RV Our Lady of Lourdes Sewell
312566	Vineland Renal Center
312567	DaVita Neptune
312568	RCG Renex East Orange
312569	DaVita Middletown
312570	Davita PDI Newark
312571	RV Trenton
312572	RV Newton
312573	Bergen Renal Care Center
312574	Davita Somerset
312575	Berlin Dialysis Center
312576	RCG St. Barnabas South Orange Avenue

312577	RCG St. Barnabas Dialysis Center
312578	RCG NNA Elizabeth
312579	RCG Cape May
312580	Hamilton Park Dialysis Center
312581	KRU Parkside Dialysis Center
313500	Parkside Dialysis Center (old number)
313501	Kennedy Hospital Stratford
313502	Kessler Dialysis Center
313503	Trinitas Satellite - Linden
313505	Mt Laurel Dialysis Center
313507	Willowbrook Dialysis Center
313511	St Joseph Satellite Paterson
313514	Valley Fairlawn
313515	St. Barnabas South Orange Avenue (old number)
313519	Trinitas Livingston Street
Puerto Rico	
400007	Ryder Memorial Hospital
400009	Santa Rosa Hospital
400013	Cayey Dialysis Center
400016	Auxilio Mutuo Hosp (Transplants Only)
400021	Concepcion Hospital
400022	Damas Hospital
40003F	Veterans' Affairs Medical Center San Juan
400044	Ponce Regional Hospital
400061	University Hospital – San Juan
402501	BMA San Juan
402502	BMA Ponce
402503	BMA Mayaguez
402504	BMA Bayamon
402505	BMA Caguas
402506	BMA San German
402507	BMA Carolina
402508	BMA Arecibo
402509	BMA Guayama
402510	Atlantis Ponce CNDS
402512	BMA Las Americas
402513	BMA Aguadilla
402514	BMA Humacao
402515	BMA Rio Piedras
402516	Aibonito Dialysis Center
402517	BMA West Ponce
402518	FMC Vega Baja Dialysis Center
402519	Atlantis Aguadilla
402520	Bayamon Renal Center
402521	Atlantis Fajardo Dialysis Center
402525	BMA Mayaguez North
402526	Aguada Dialysis Center
402527	Atlantis Mayaguez
402528	FMC Dr. Pila Dialysis Center
402529	FMC Arecibo Norte
402530	FMC Auxilio Mutuo
402531	FMC Yauco Dialysis Center
402533	Atlantis Manati Dialysis Center

402534	Atlantis Guaynabo Dialysis Center
402535	Atlantis Lares
402536	Atlantis San Sebastian
403301	University Pediatric Hospital
U.S. VIRGIN ISLANDS	
480001	St. Thomas Hospital (Roy Schneider)
480002	St. Croix Hospital (Juan Luis)
482500	Health Quest St. Croix

2004 Transplant Activity Profile		
Provider	Dialysis Caseload	Number of Patients Transplanted
310001	251	18
310002	130	3
310008	201	8
310012	14	0
310014	0	0
310015	141	8
310017	13	3
310019	20	1
31001F	48	1
310025	68	1
310027	61	1
310029	177	7
310032	89	5
310034	43	5
310038	29	7
310047	163	7
310052	97	10
310054	141	2
310064	75	5
310073	95	1
310074	22	2
310075	18	0
310076	0	3
310077	34	2
310083	138	0
310086	171	11
310092	157	3
310096	78	2
312501	191	6
312502	232	5
312503	100	4
312504	103	10
312505	127	6
312506	106	1
312508	156	9
312509	208	7
312510	71	1
312512	0	1
312513	121	8
312514	51	2
312515	56	2
312516	23	0

2004 Transplant Activity Profile		
Provider	Dialysis Caseload	Number of Patients Transplanted
312517	63	6
312518	85	4
312519	20	2
312520	83	3
312521	77	5
312522	90	1
312523	73	3
312524	22	6
312525	251	25
312527	79	5
312528	86	6
312529	79	3
312530	92	5
312531	74	1
312532	92	3
312533	122	1
312534	64	8
312535	77	3
312536	135	9
312537	134	10
312538	66	4
312539	17	0
312540	114	2
312541	52	4
312542	112	9
312543	86	7
312544	54	3
312545	88	6
312546	129	3
312547	29	2
312548	72	4
312549	38	2
312550	52	9
312551	85	1
312552	75	1
312553	70	3
312554	86	1
312555	72	5
312556	39	2
312557	86	5
312558	141	6

2004 Transplant Activity Profile		
Provider	Dialysis Caseload	Number of Patients Transplanted
312559	102	7
312560	166	10
312561	61	4
312562	34	2
312563	60	2
312564	80	2
312565	36	1
312566	81	3
312567	48	0
312568	66	1
312569	23	2
312570	36	0
312571	48	0
312572	40	0
312573	39	1
312574	31	1
312575	17	0
312576	132	8
312577	60	14
312578	38	0
312579	36	0
312580	8	0
312581	116	1
313500	0	3
313501	112	5
313502	51	6
313503	73	3
313505	108	7
313507	89	5
313511	360	20
313514	132	5
313515	0	0
313519	63	0
400007	1	0
400009	12	1
400013	91	7
400016	0	0
400021	0	0
400022	1	0
40003F	47	1
400044	0	0
400061	82	2

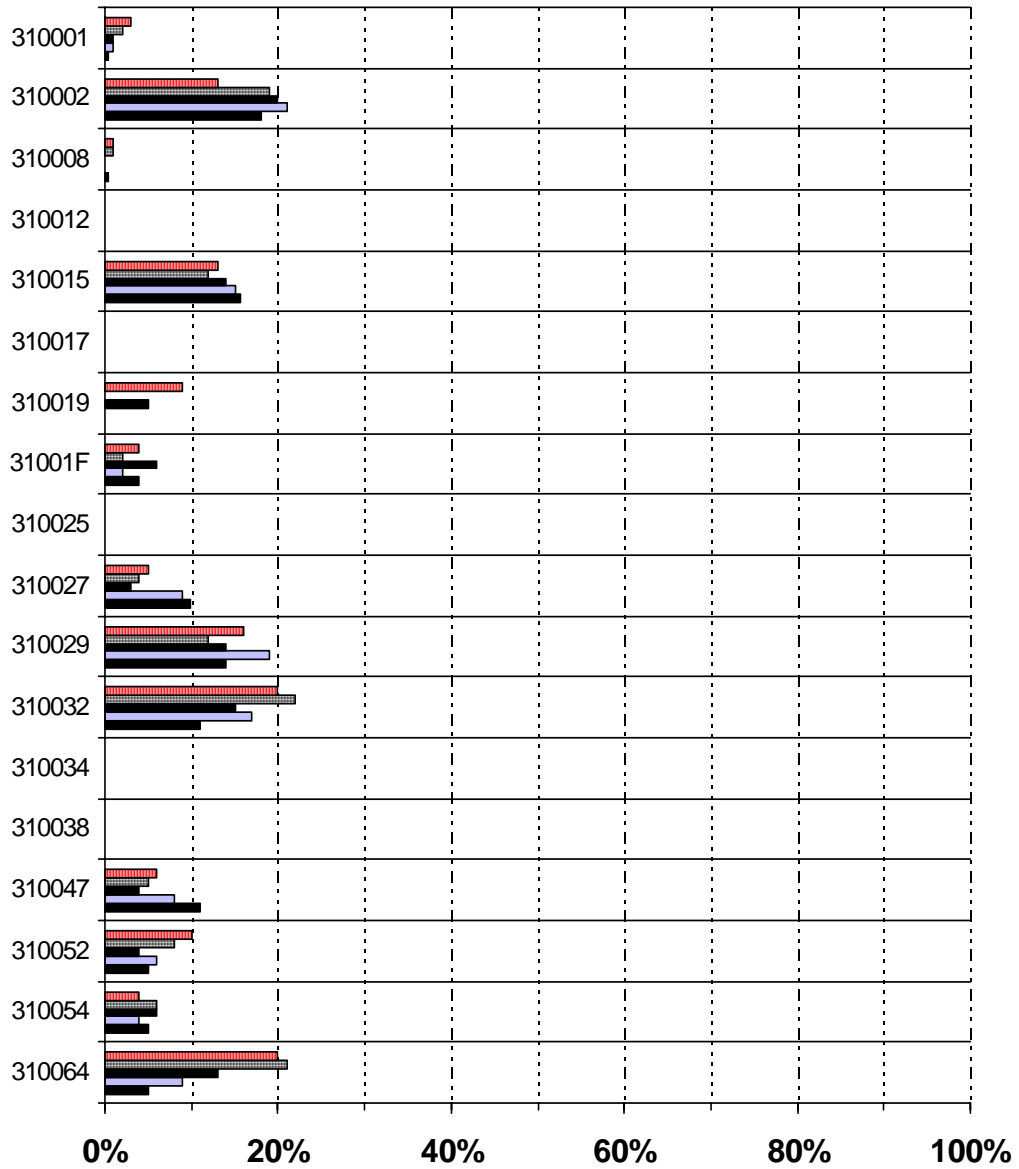
2004 Transplant Activity Profile		
Provider	Dialysis Caseload	Number of Patients Transplanted
402501	138	4
402502	84	0
402503	186	5
402504	187	3
402505	207	7
402506	65	1
402507	176	3
402508	186	8
402509	68	3
402510	143	2
402512	0	3
402513	97	4
402514	155	3
402515	111	3
402516	0	0
402517	142	5
402518	158	4
402519	118	0
402520	0	1
402521	82	4
402525	75	2
402526	6	0
402527	80	3
402528	100	1
402529	30	0
402530	368	24
402531	70	0
402533	96	6
402534	104	0
402535	38	0
402536	44	2
403301	25	1
480001	69	1
480002	65	1
482500	20	0

Source: 2004 ESRD Facility Survey (Form 2744)

Goal Achievement in Home Dialysis



Facilities*



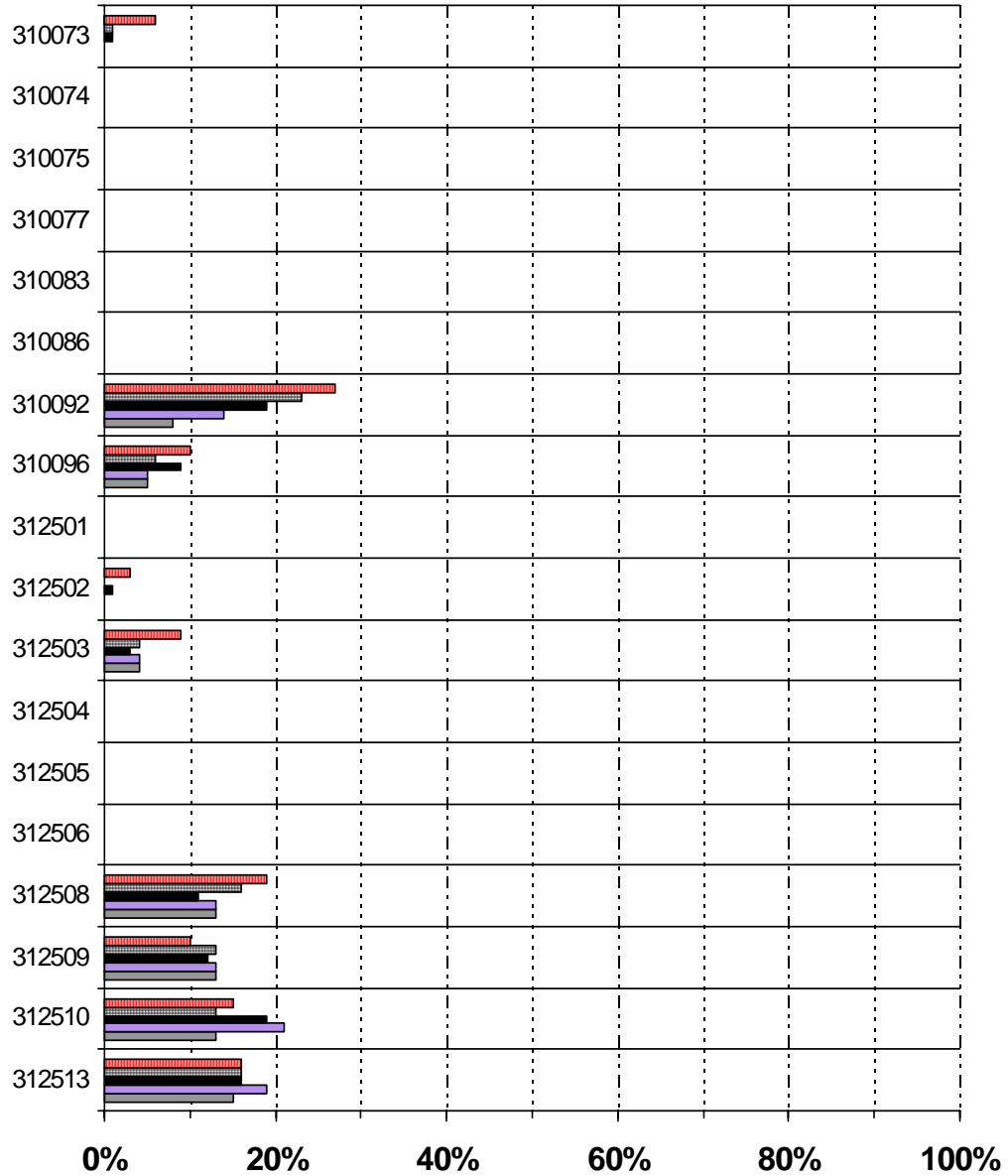
Percent of Caseload in Home Dialysis

*Facilities with no caseload omitted.

Goal Achievement in Home Dialysis



Facilities*



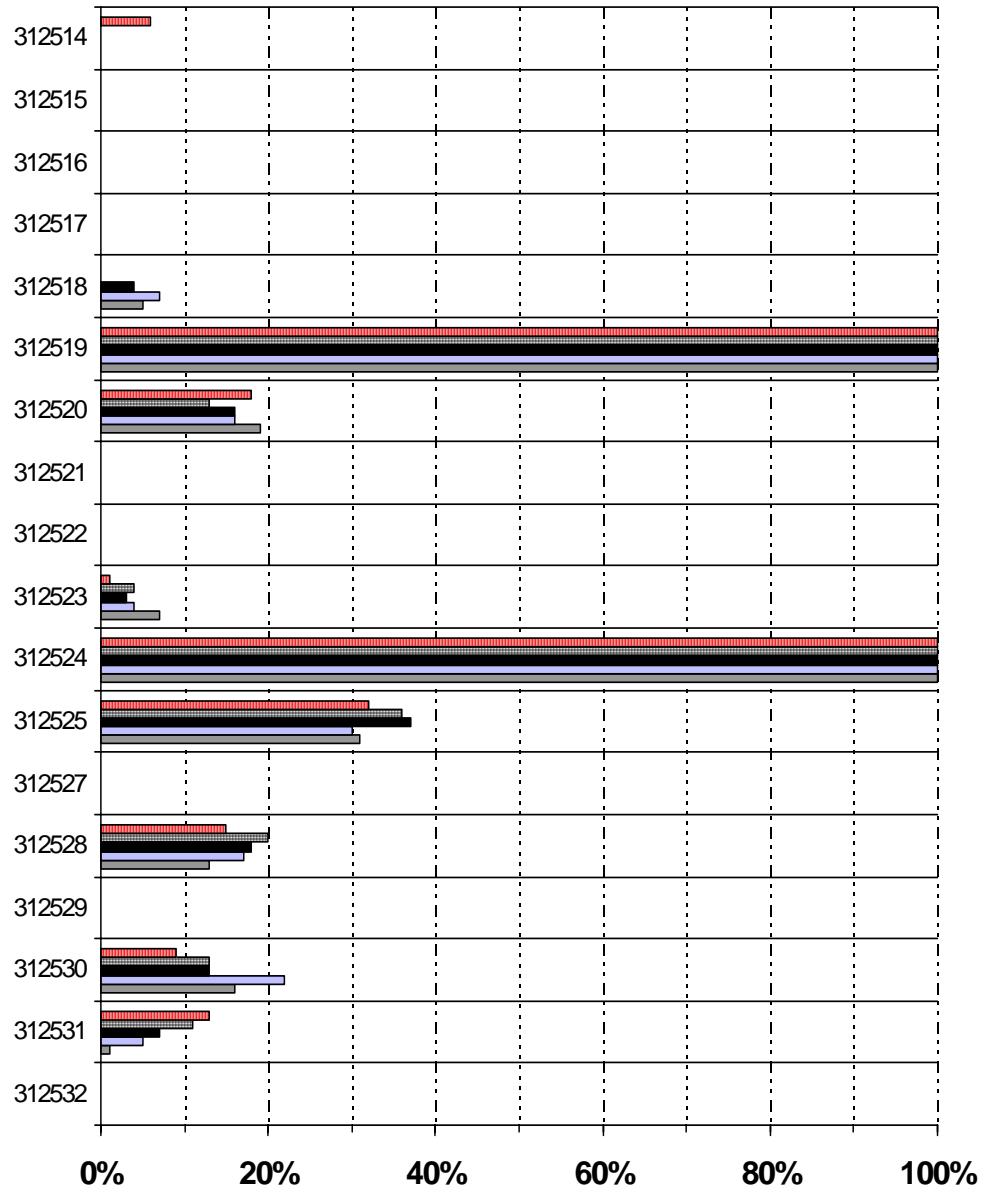
Percent of Caseload in Home Dialysis

*Facilities with no caseload omitted.

Goal Achievement in Home Dialysis



Facilities*



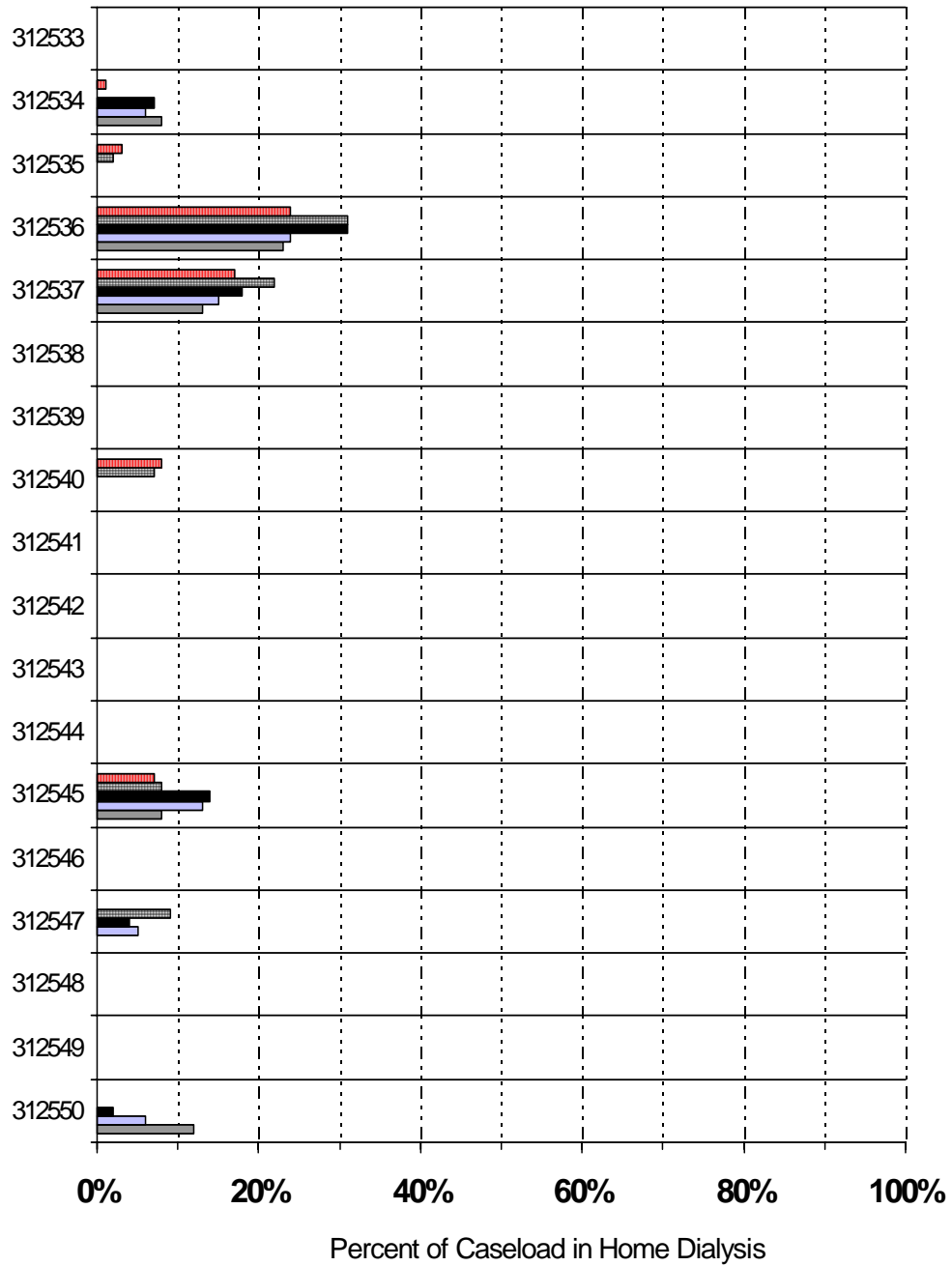
Percent of Caseload in Home Dialysis

*Facilities with no caseload omitted.

Goal Achievement in Home Dialysis



Facilities*

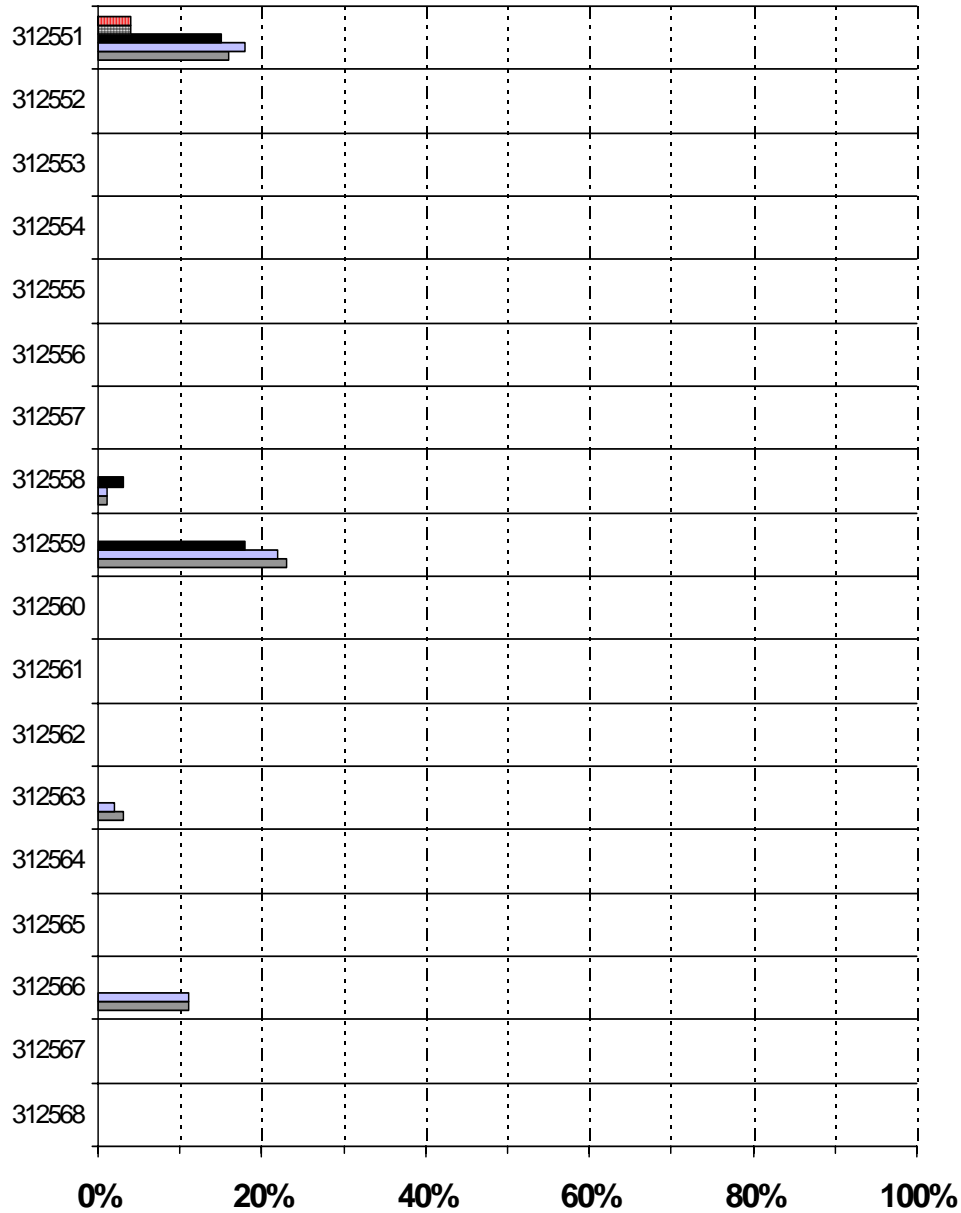


*Facilities with no caseload omitted.

Goal Achievement in Home Dialysis



Facilities*



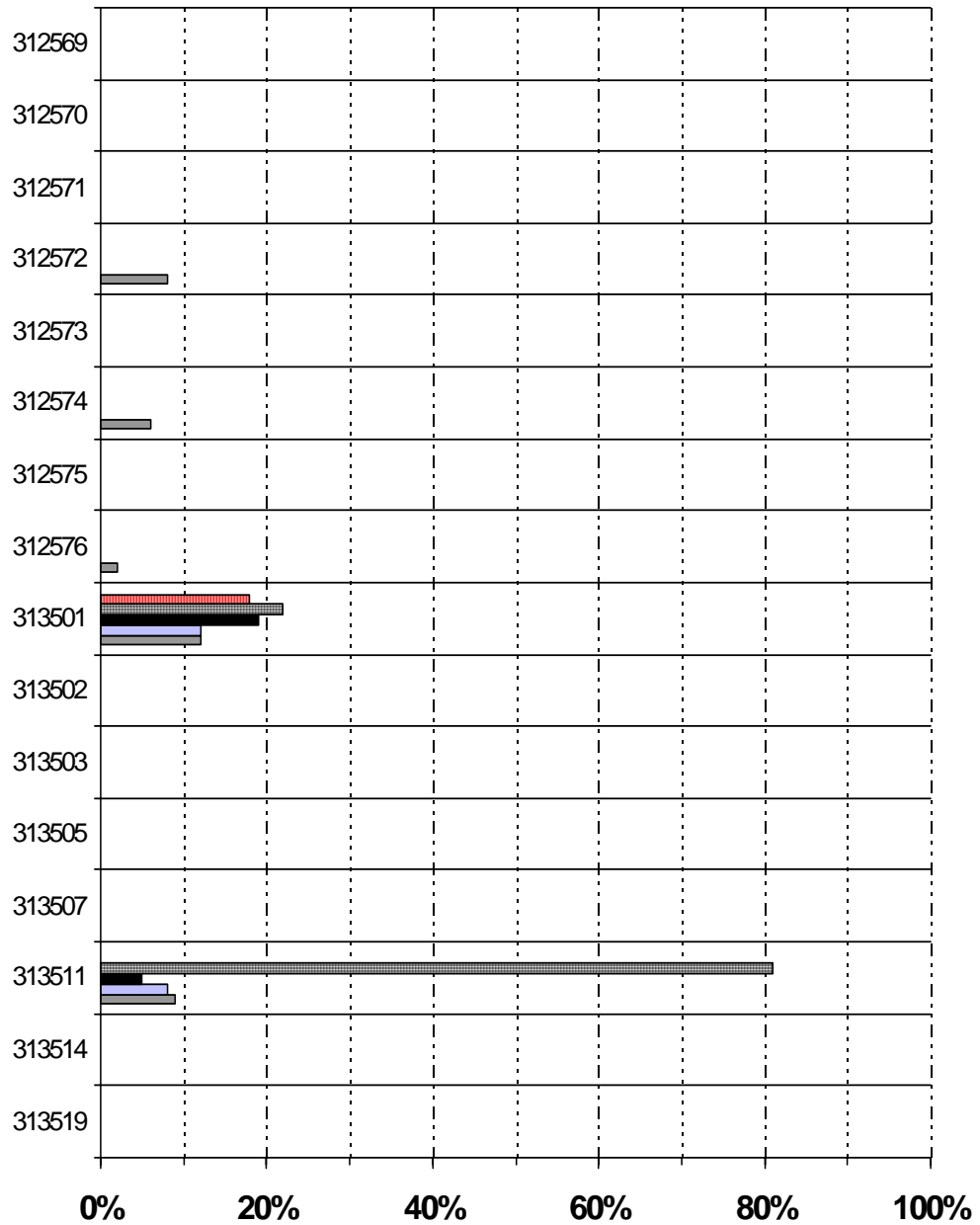
Percent of Caseload in Home Dialysis

*Facilities with no caseload omitted.

Goal Achievement in Home Dialysis



Facilities*



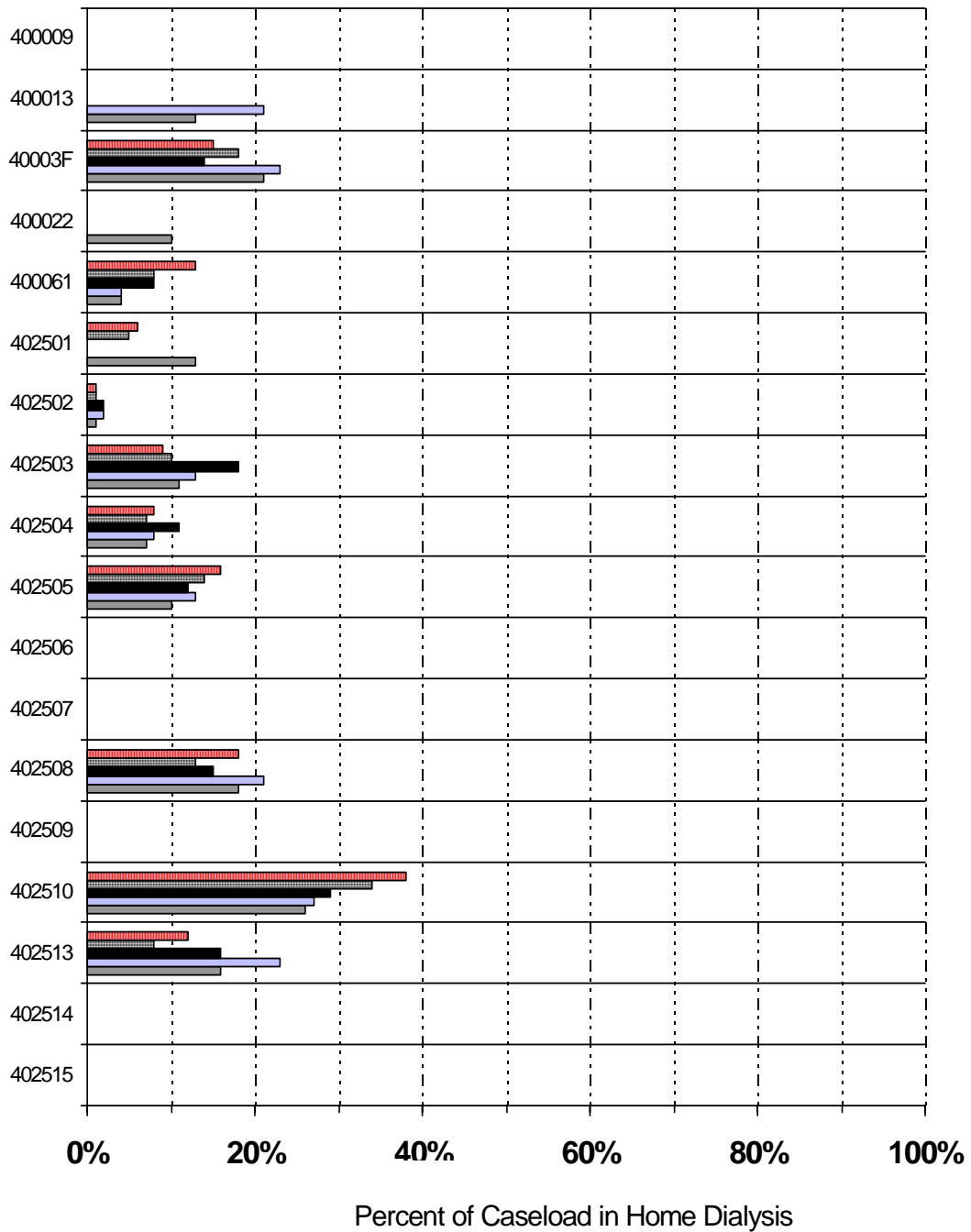
Percent of Caseload in Home Dialysis

*Facilities with no caseload omitted.

Goal Achievement in Home Dialysis



Facilities*

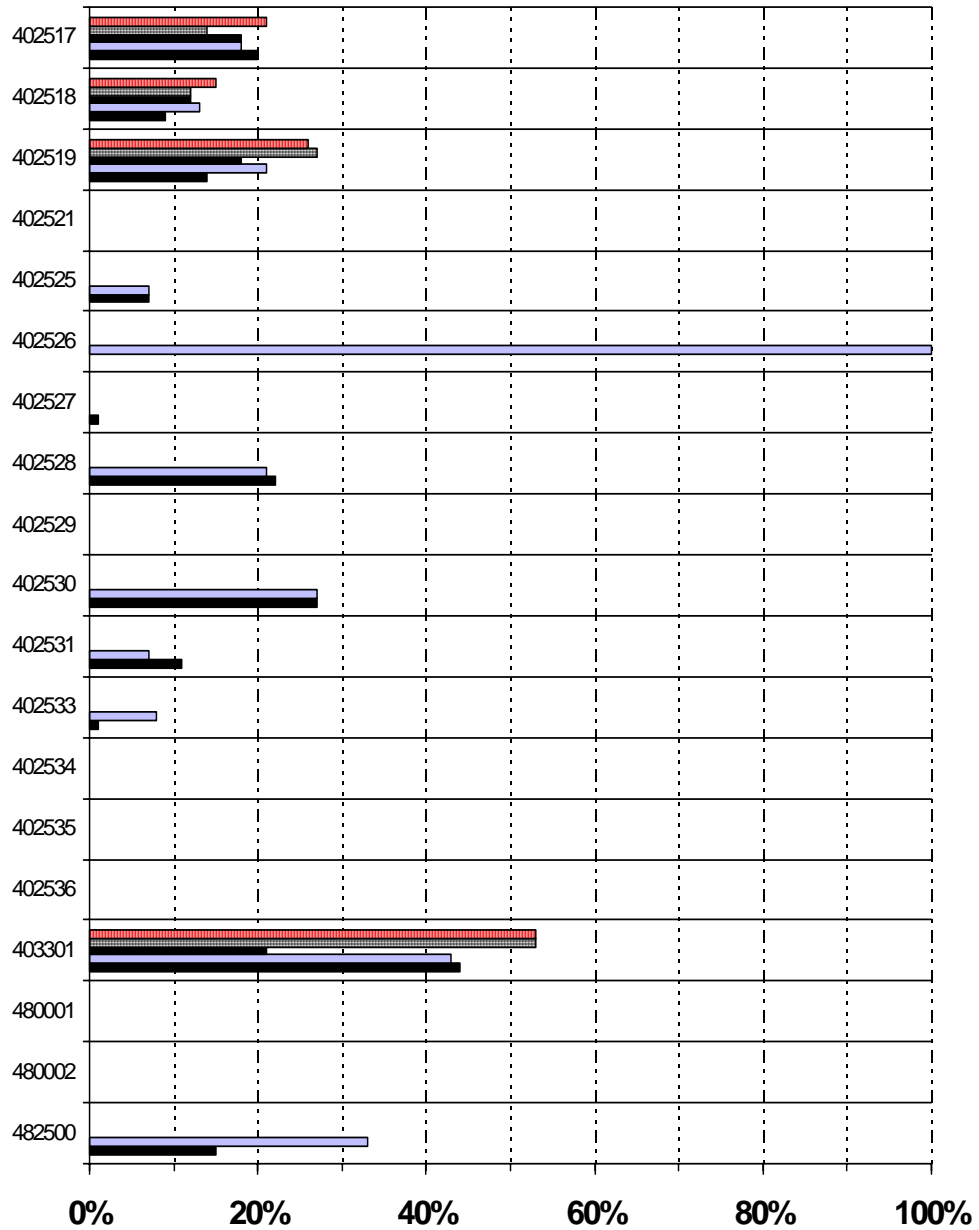


*Facilities with no caseload omitted.

Goal Achievement in Home Dialysis



Facilities*



Percent of Caseload in Home Dialysis

*Facilities with no caseload omitted.

2004 Home Dialysis Goal Activity Profile		
Provider	Dialysis Caseload	Patients on Home Dialysis
310001	251	1
310002	130	24
310008	201	1
310012	14	0
310014	0	0
310015	141	22
310017	13	0
310019	21	0
31001F	48	2
310025	68	0
310027	61	6
310029	177	25
310032	89	10
310034	43	0
310038	29	0
310047	163	18
310052	97	5
310054	141	7
310064	75	4
310073	95	0
310074	22	0
310075	18	0
310077	34	0
310083	138	0
310086	171	0
310092	158	12
310096	78	4
312501	191	0
312502	232	0
312503	100	4
312504	103	0
312505	127	0
312506	106	0
312508	156	21
312509	208	27
312510	71	9
312513	121	18
312514	51	0
312515	56	0
312516	23	0
312517	63	0
312518	85	4

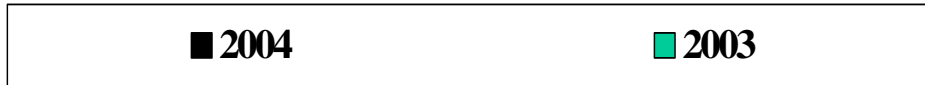
2004 Home Dialysis Goal Activity Profile		
Provider	Dialysis Caseload	Patients on Home Dialysis
312519	20	20
312520	83	16
312521	77	0
312522	90	0
312523	73	5
312524	22	22
312525	251	78
312527	79	0
312528	86	11
312529	79	0
312530	92	15
312531	74	1
312532	92	0
312533	122	0
312534	64	5
312535	77	0
312536	135	31
312537	134	18
312538	66	0
312539	17	0
312540	114	0
312541	52	0
312542	112	0
312543	86	0
312544	54	0
312545	88	7
312546	129	0
312547	29	0
312548	72	0
312549	38	0
312550	52	6
312551	85	14
312552	75	0
312553	70	0
312554	86	0
312555	72	0
312556	39	0
312557	86	0
312558	141	2
312559	102	23
312560	166	0
312561	61	0
312562	34	0

2004 Home Dialysis Goal Activity Profile		
Provider	Dialysis Caseload	Patients on Home Dialysis
312563	60	2
312564	80	0
312565	36	0
312566	81	9
312567	48	0
312568	66	0
312569	23	0
312570	36	0
312571	48	0
312572	40	3
312573	39	0
312574	31	2
312575	17	0
312576	132	2
312577	62	23
312578	38	0
312579	36	0
312580	8	0
312581	116	0
313501	112	13
313502	51	0
313503	73	0
313505	108	0
313507	89	0
313511	359	32
313514	132	0
313519	63	0
NJ Totals	9729	584
400007	1	0
400009	12	0
400013	91	12
400022	1	0
40003F	47	10
400061	92	4
402501	138	18
402502	84	1
402503	186	21
402504	187	13
402505	207	20
402506	65	0
402507	176	0
402508	186	34
402509	68	0

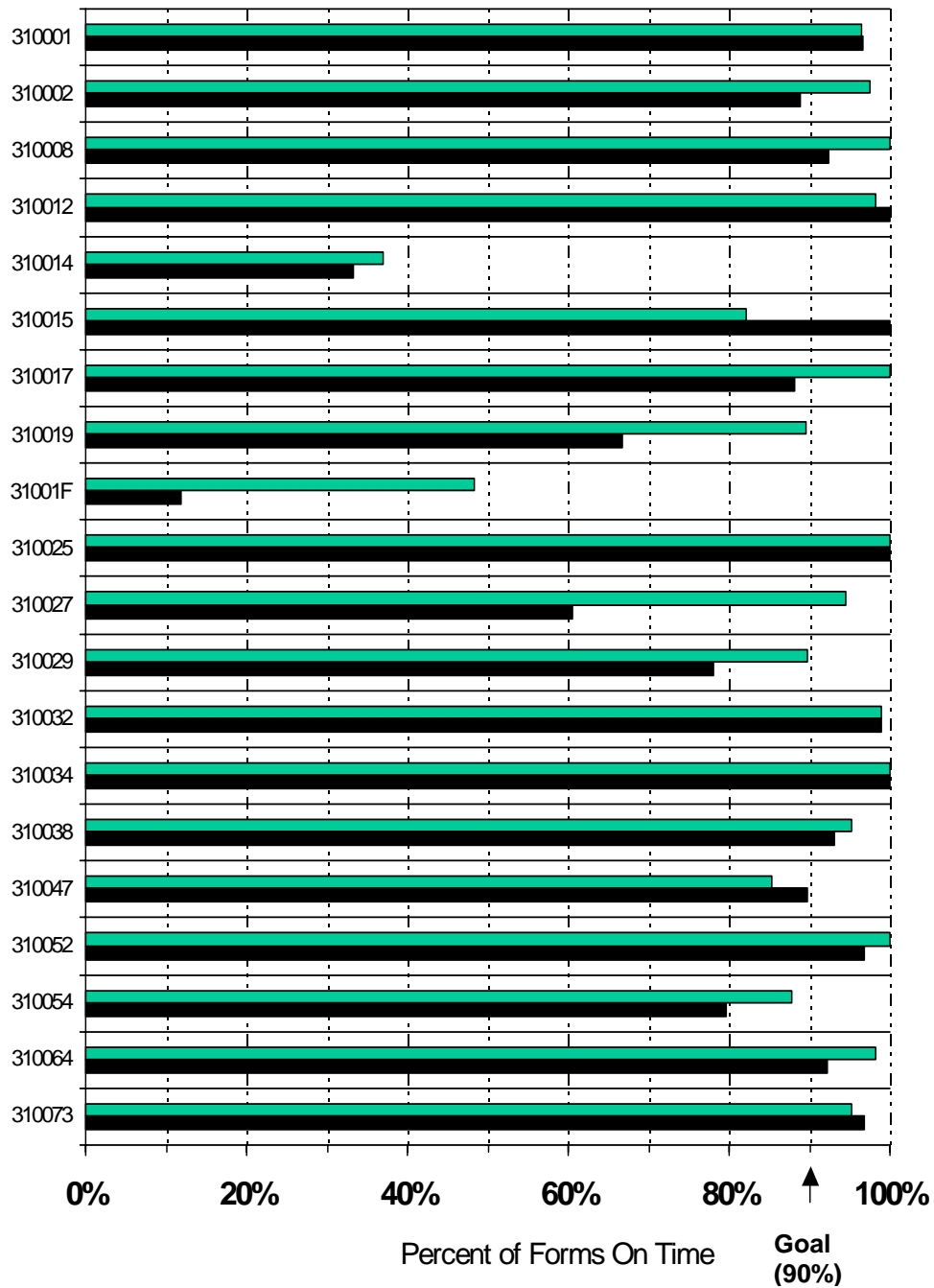
2004 Home Dialysis Goal Activity Profile		
Provider	Dialysis Caseload	Patients on Home Dialysis
402510	144	38
402513	97	16
402514	155	0
402515	111	0
402517	142	29
402518	158	14
402519	118	17
402521	82	0
402525	75	5
402526	6	6
402527	80	1
402528	101	22
402529	30	0
402530	369	99
402531	71	8
402533	96	1
402534	104	0
402535	38	0
402536	44	0
403301	25	11
PR Totals	3587	400
480001	69	0
480002	65	0
482500	20	3
USVI Totals	154	3
Network Totals	13470	987

Source: 2004 ESRD Facility Survey (Form 2744)

Goal Achievement in Federal Forms Submission Medical Evidence Reports



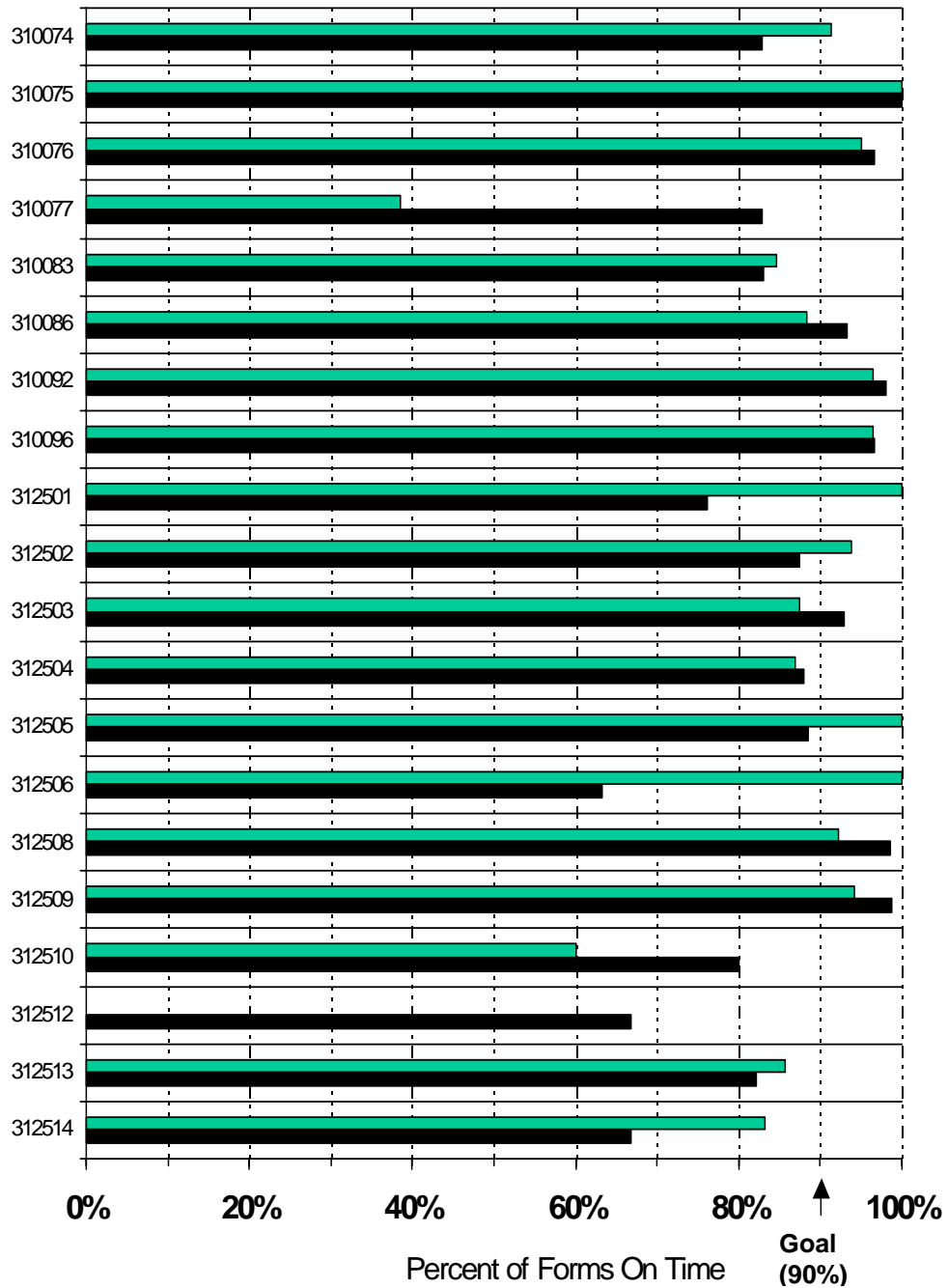
Facilities



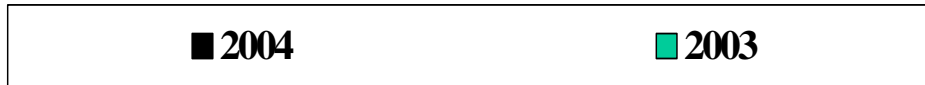
Goal Achievement in Federal Forms Submission Medical Evidence Reports



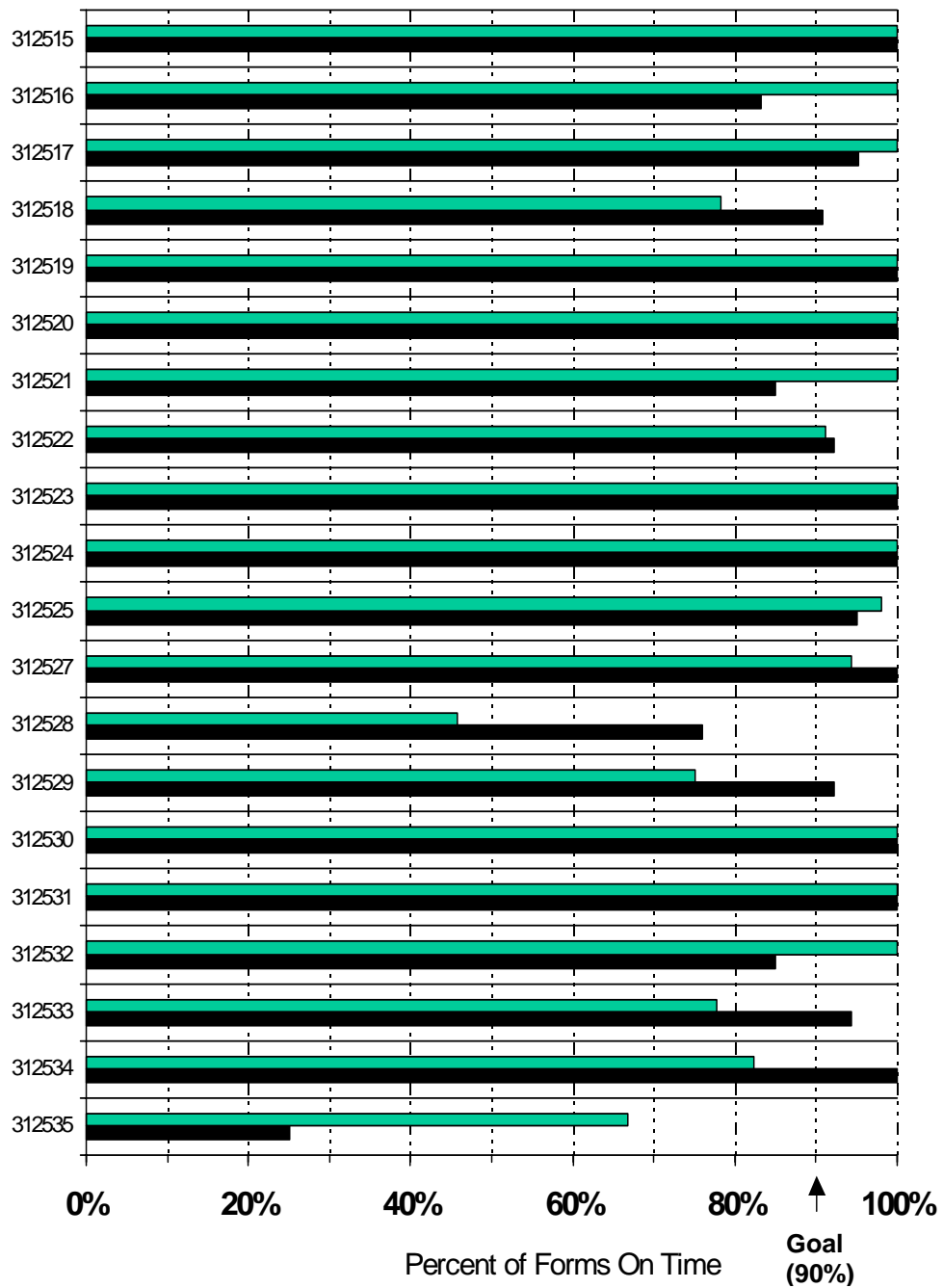
Facilities



Goal Achievement in Federal Forms Submission Medical Evidence Reports



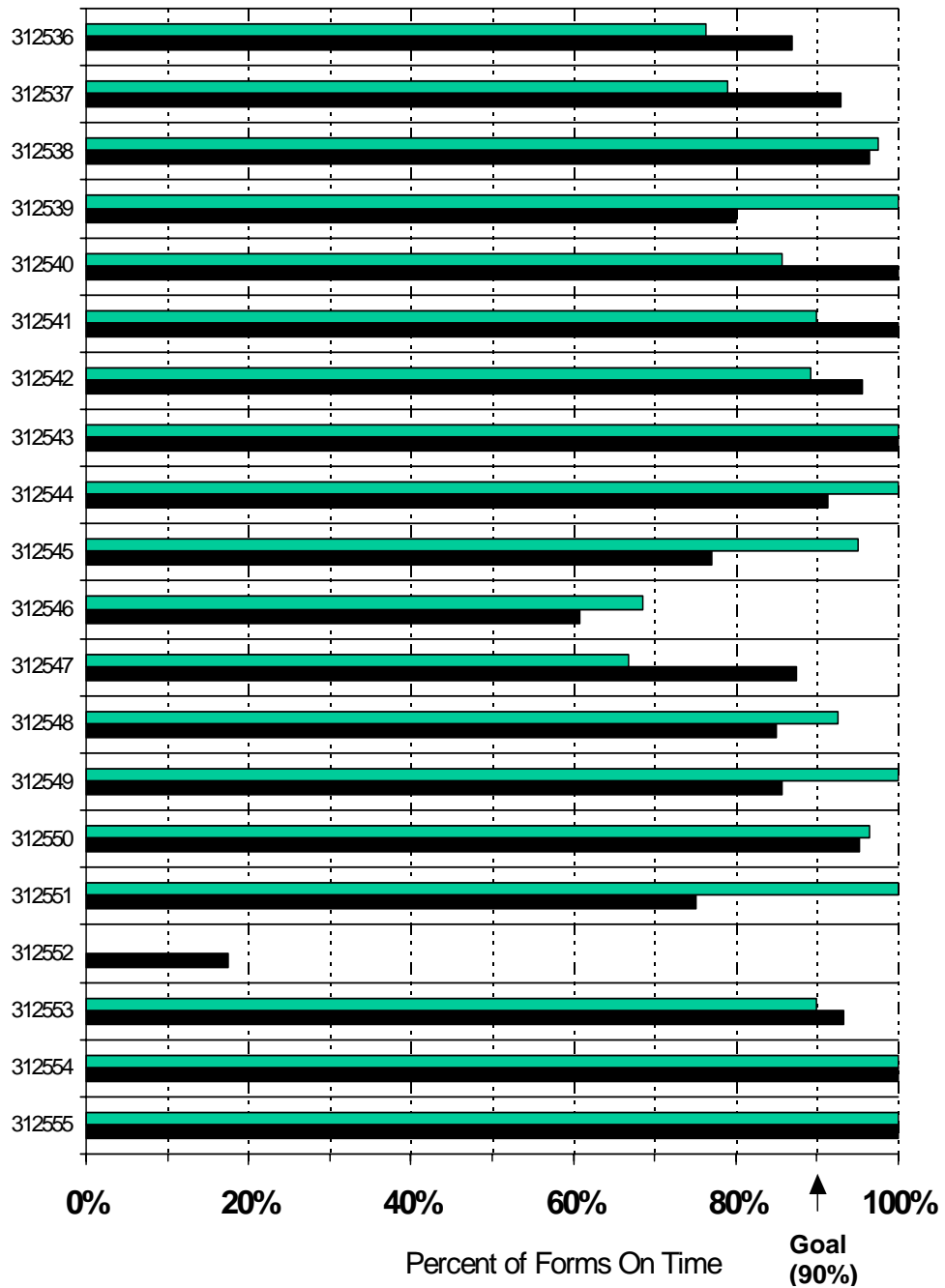
Facilities



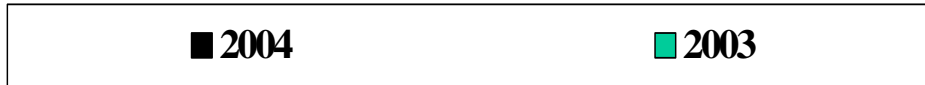
Goal Achievement in Federal Forms Submission Medical Evidence Reports



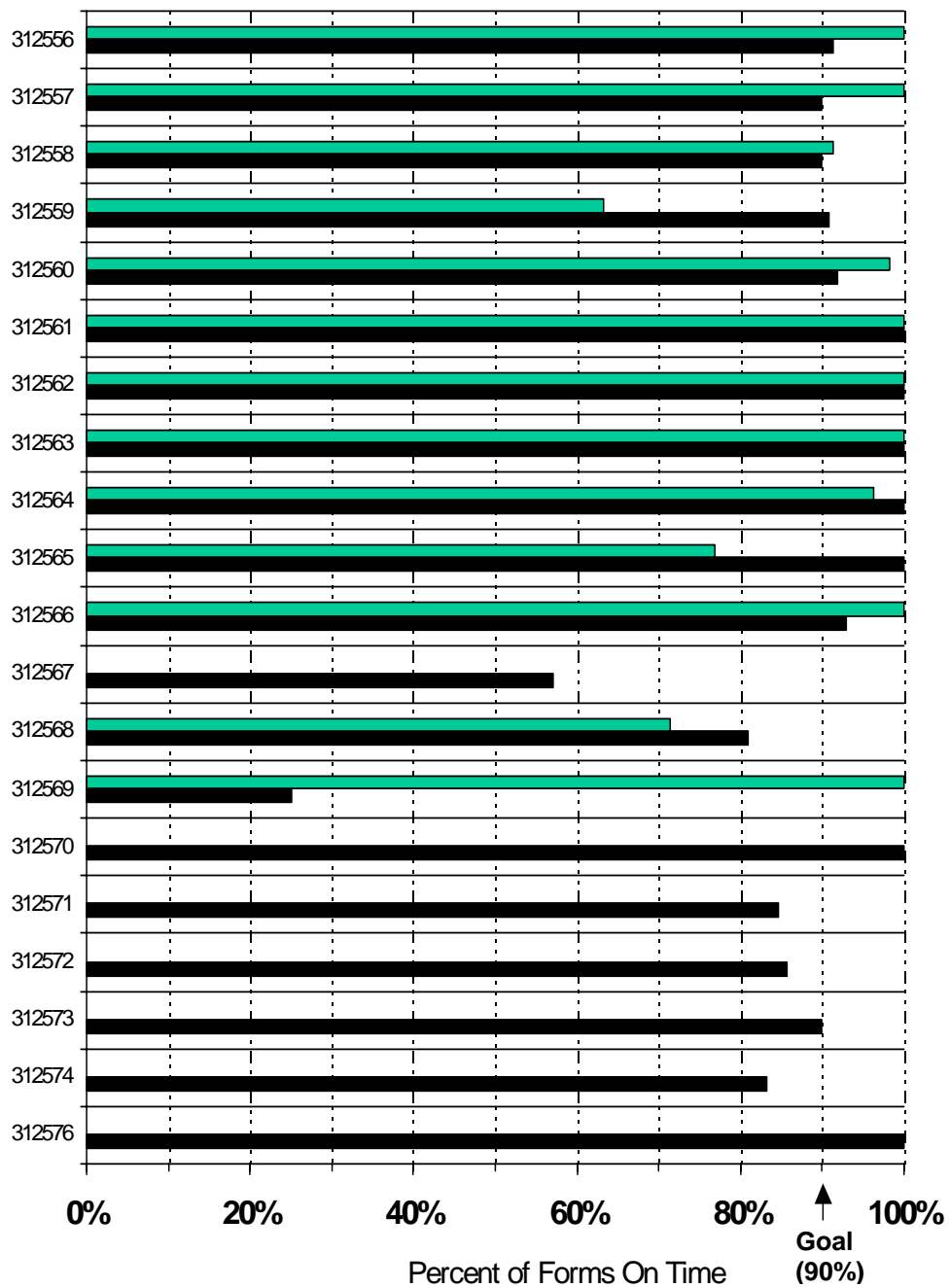
Facilities



Goal Achievement in Federal Forms Submission Medical Evidence Reports



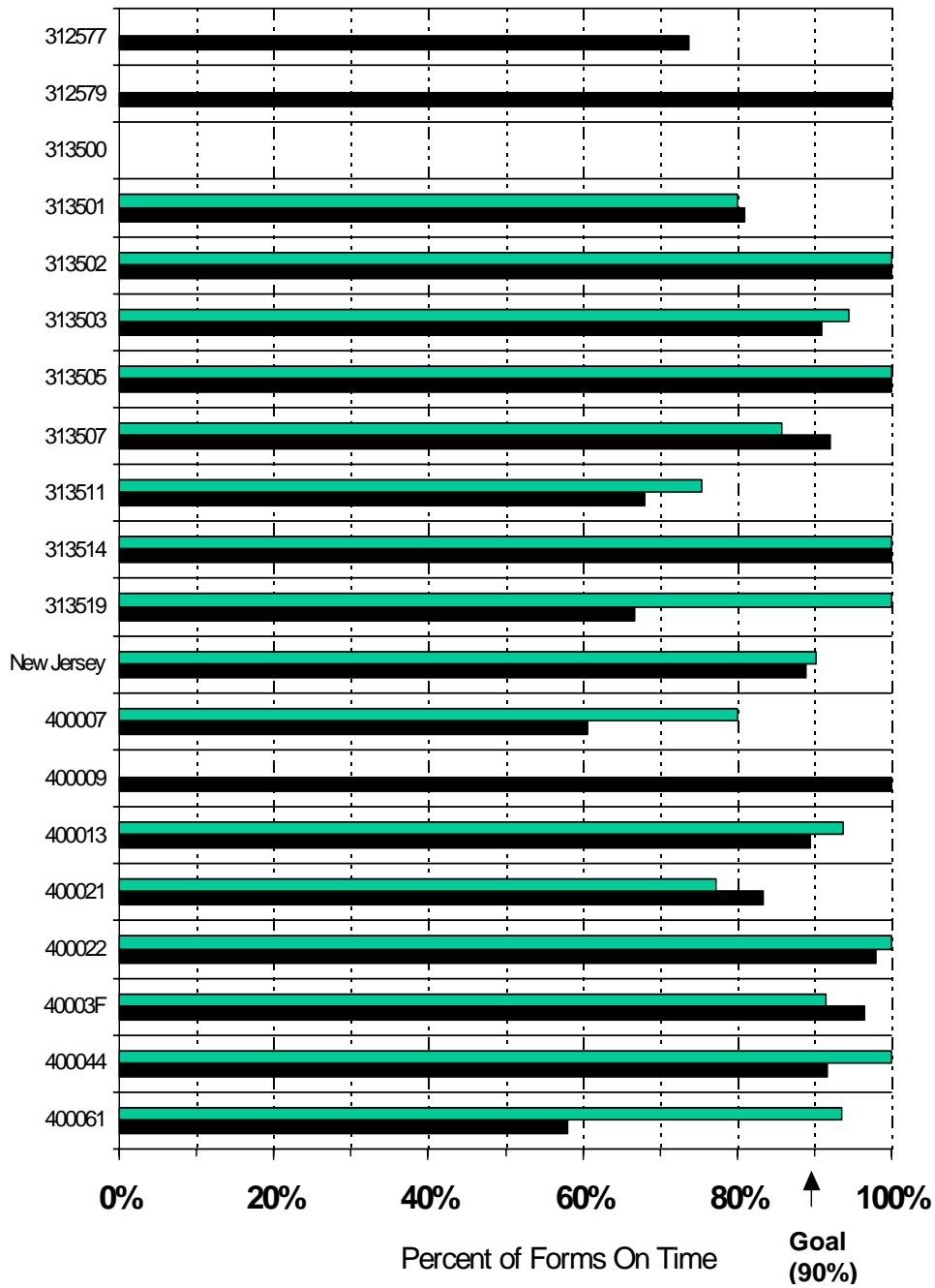
Facilities



Goal Achievement in Federal Forms Submission Medical Evidence Reports



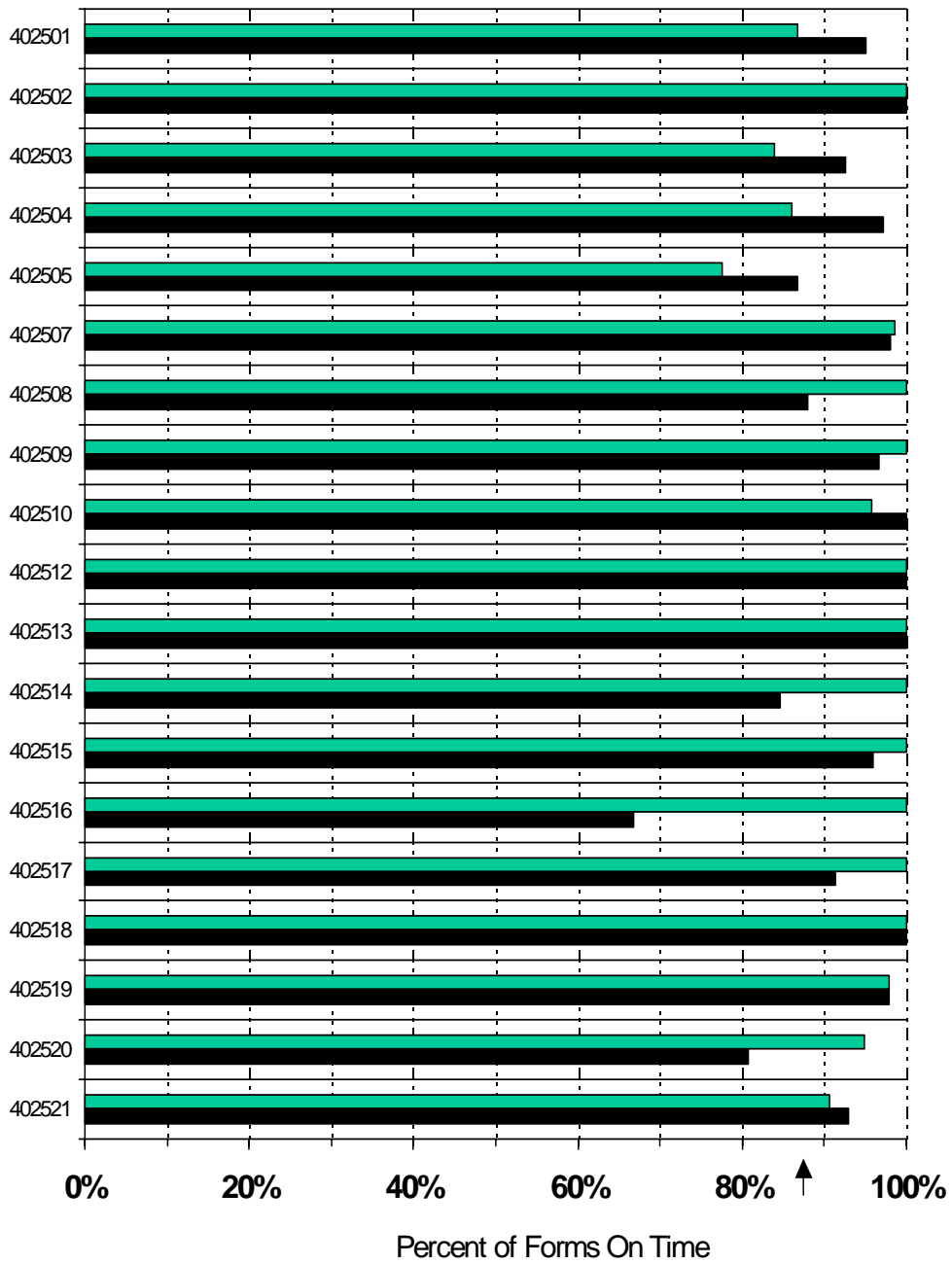
Facilities



Goal Achievement in Federal Forms Submission Medical Evidence Reports



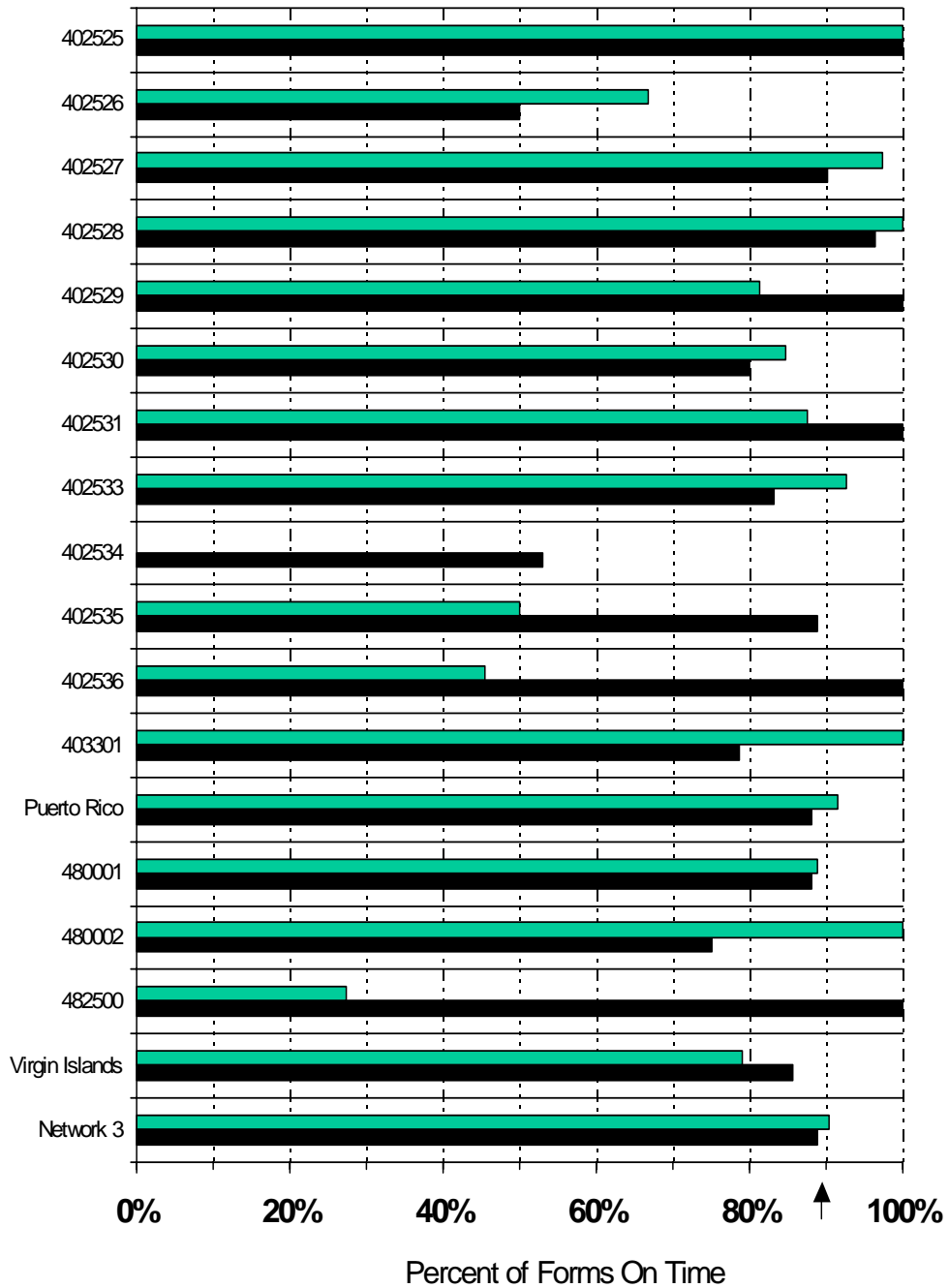
Facilities



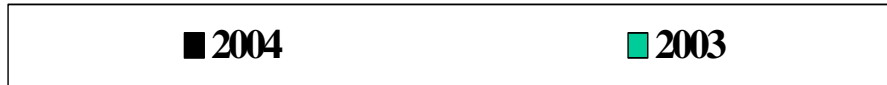
Goal Achievement in Federal Forms Submission Medical Evidence Reports



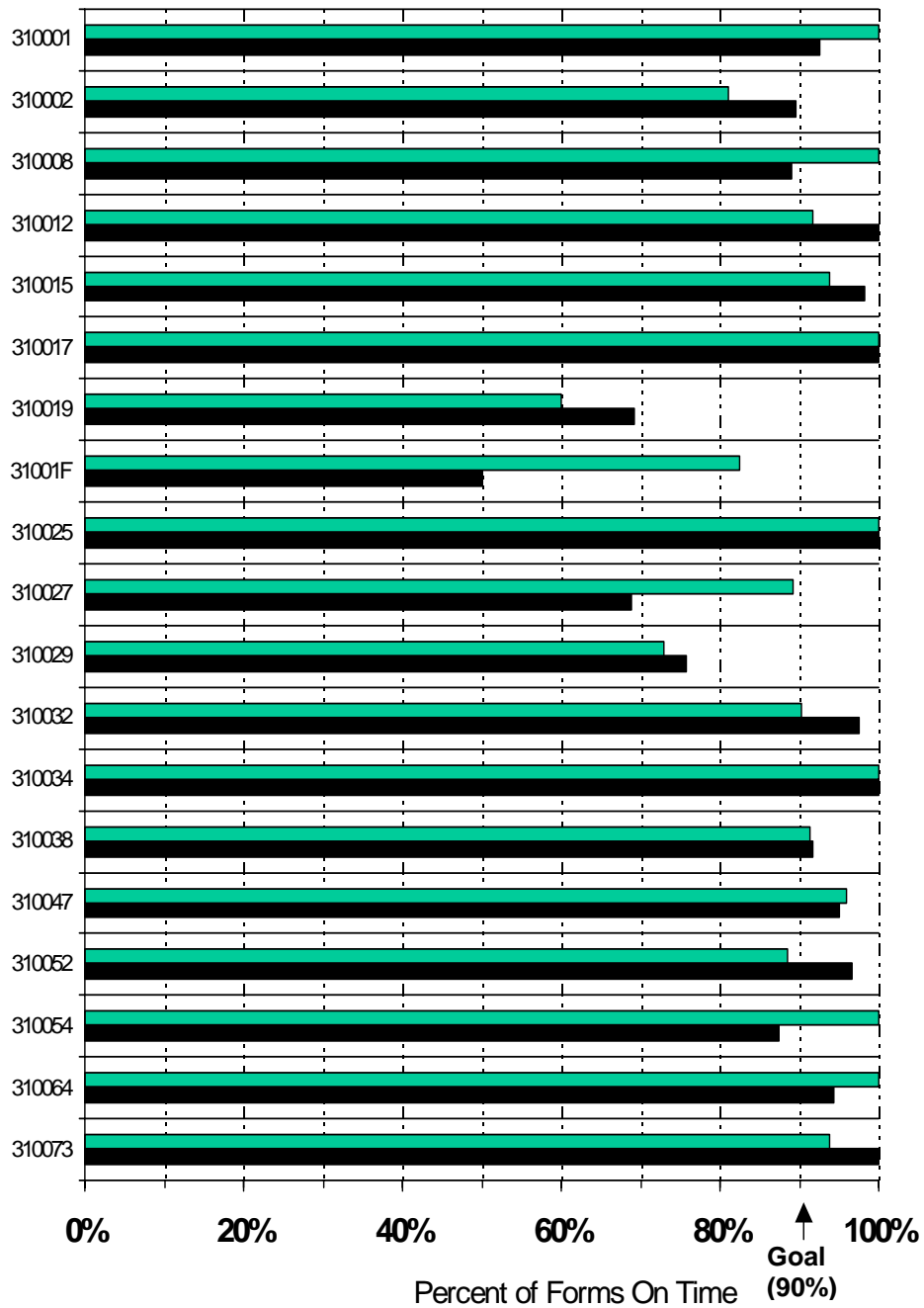
Facilities



Goal Achievement in Federal Forms Submission Death Notices



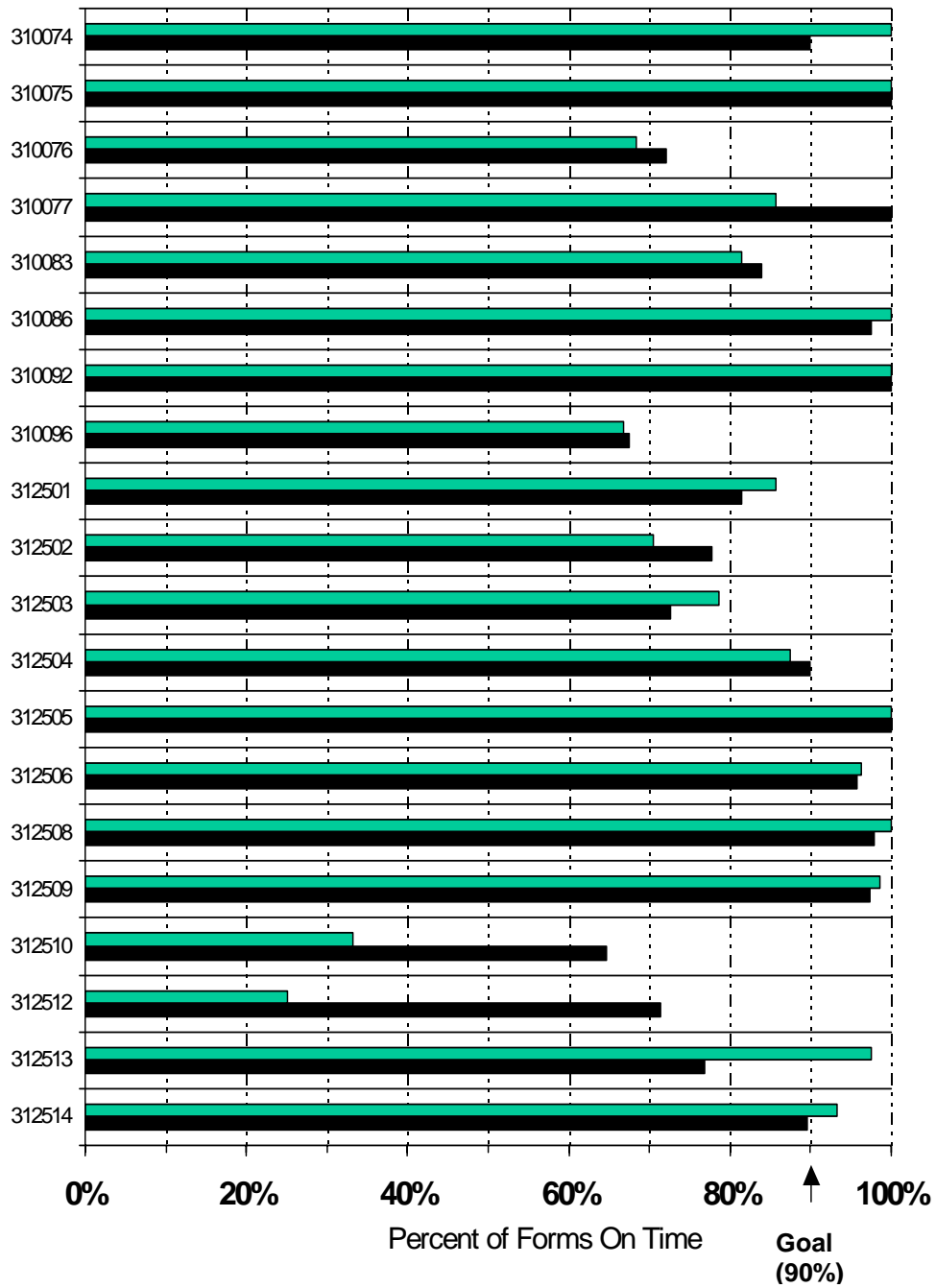
Facilities



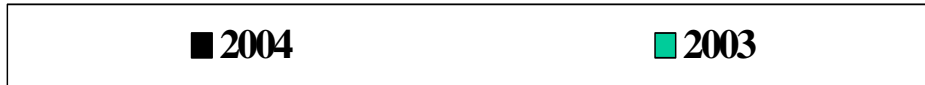
Goal Achievement in Federal Forms Submission Death Notices



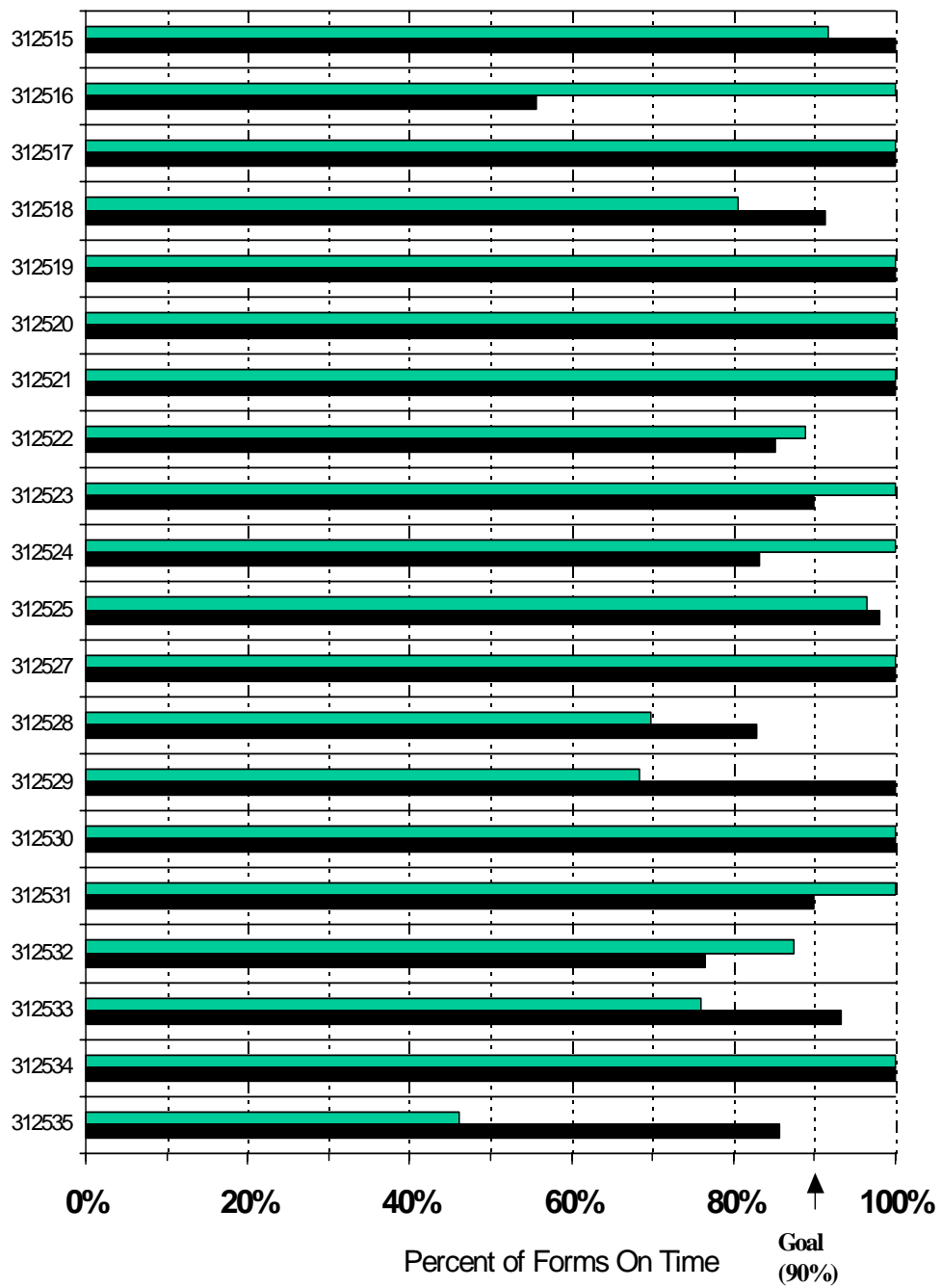
Facilities



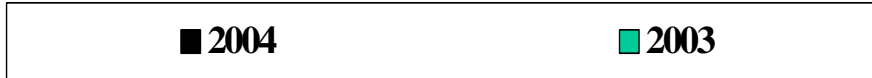
Goal Achievement in Federal Forms Submission Death Notices



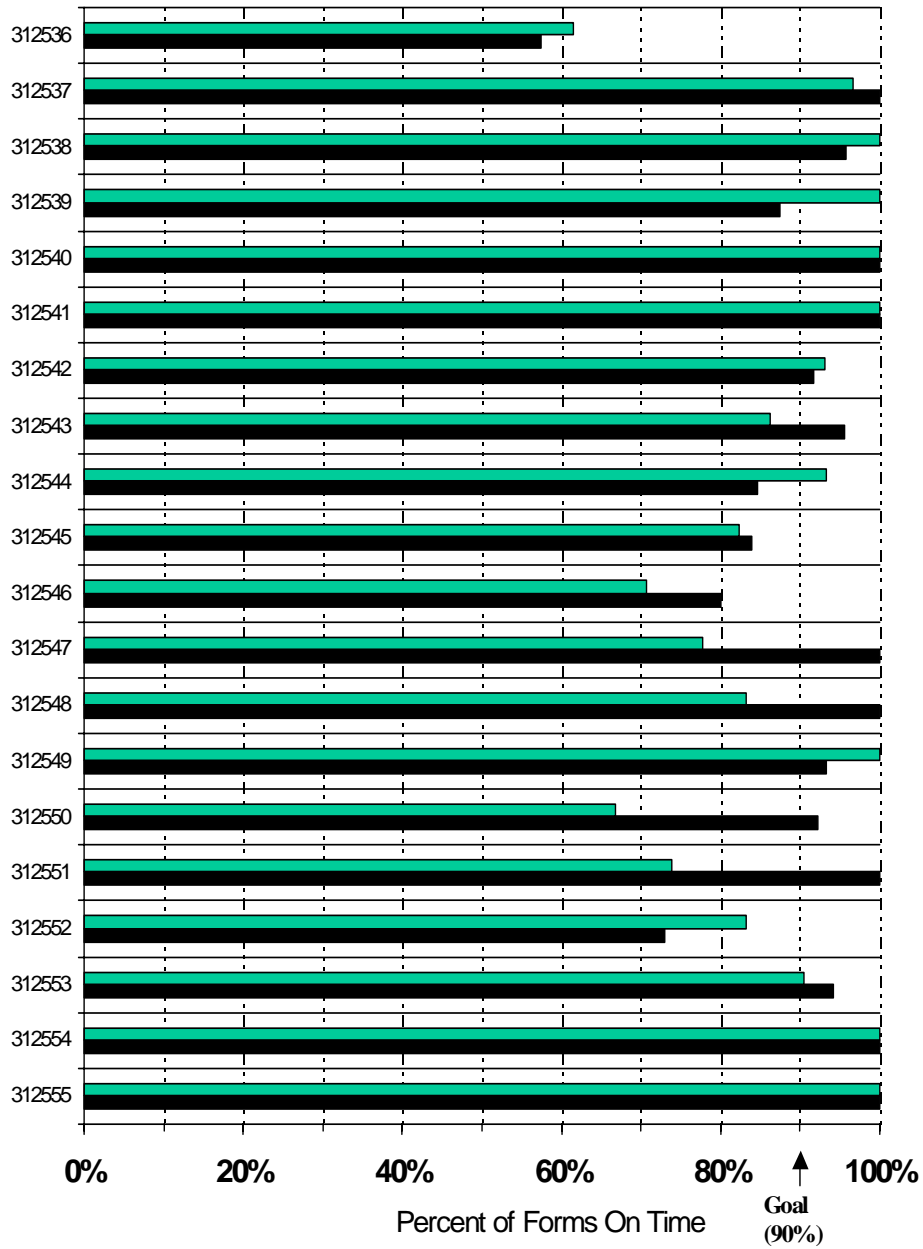
Facilities



Goal Achievement in Federal Forms Submission Death Notices



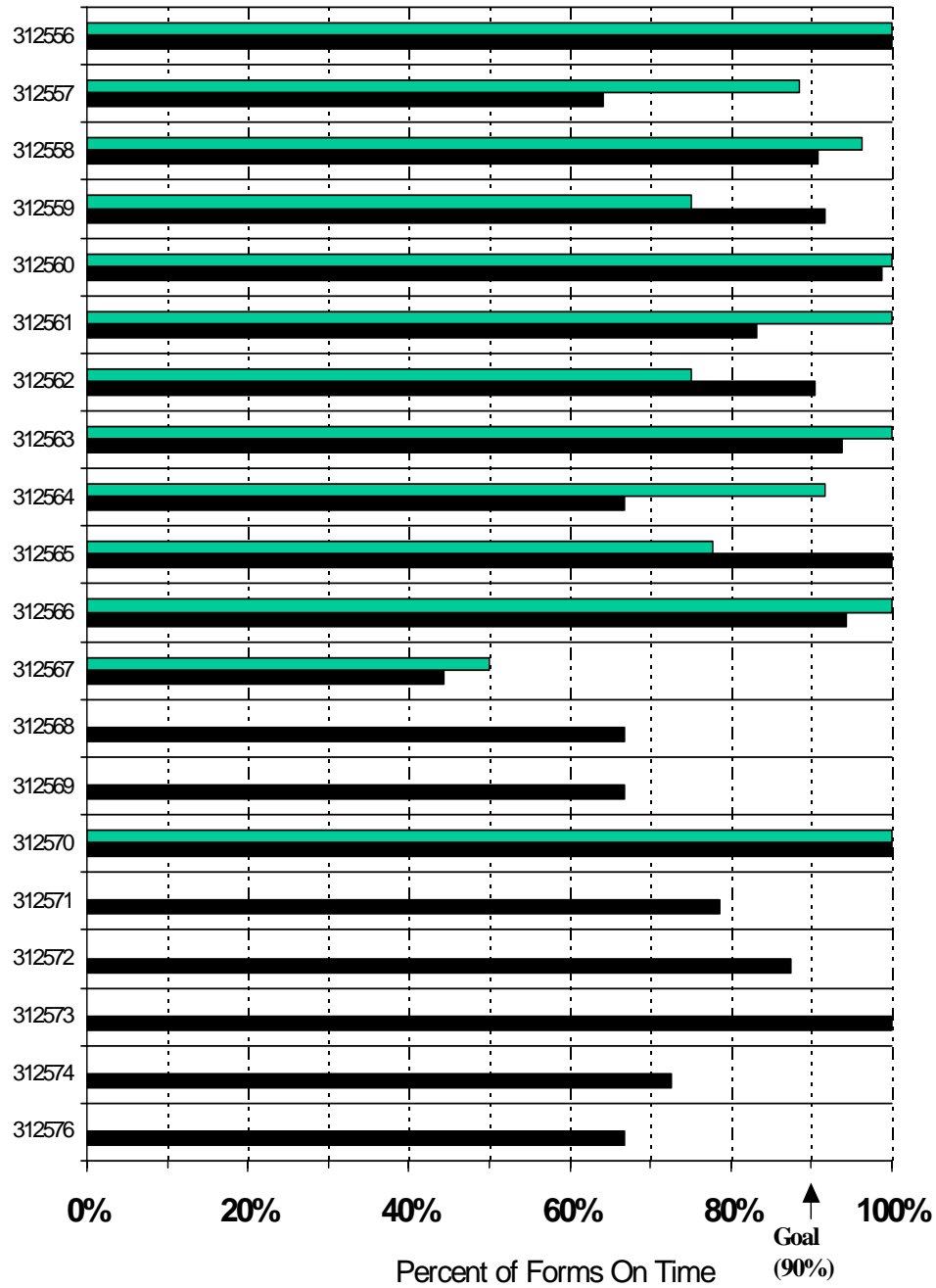
Facilities



Goal Achievement in Federal Forms Submission Death Notices



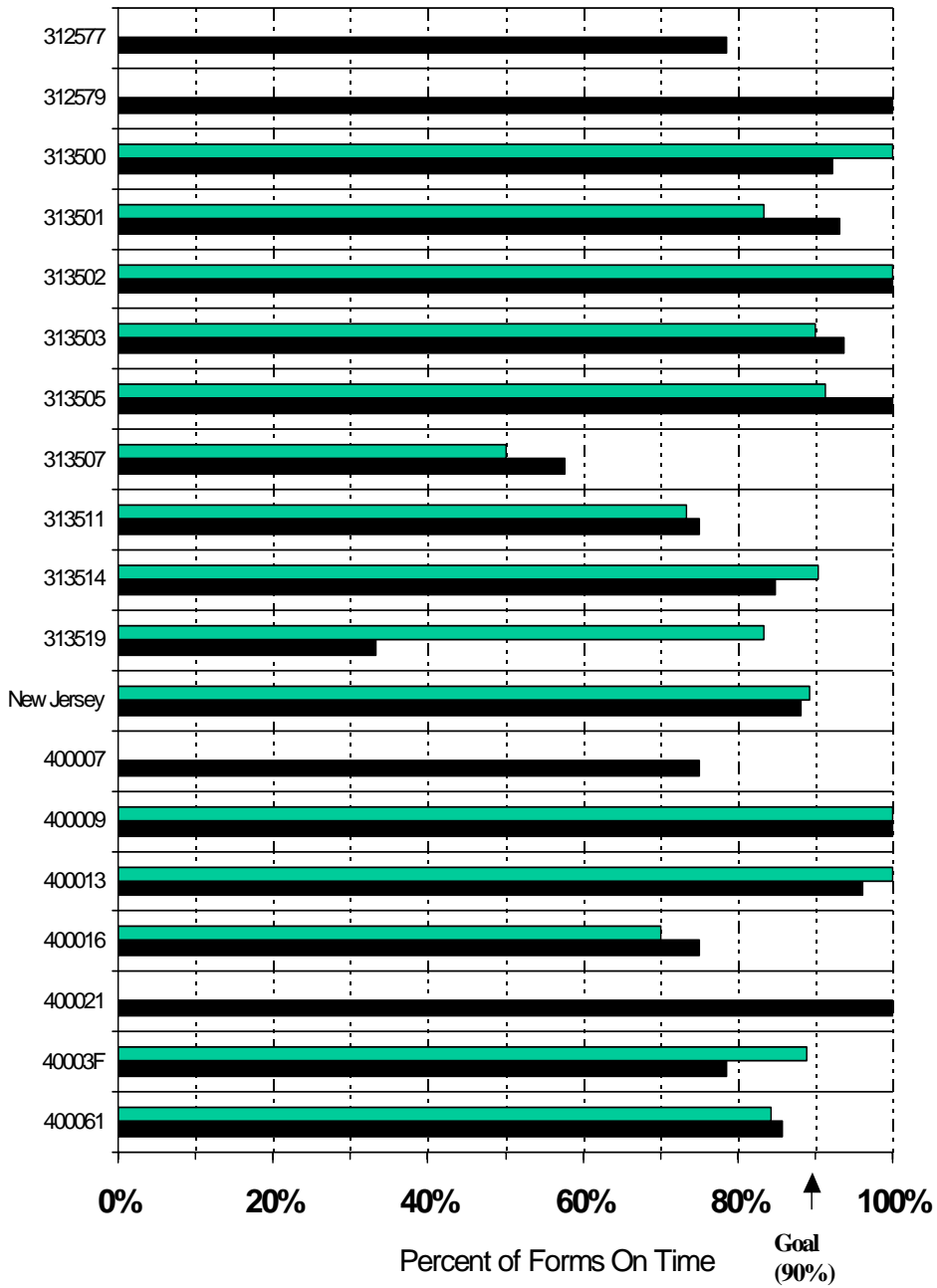
Facilities



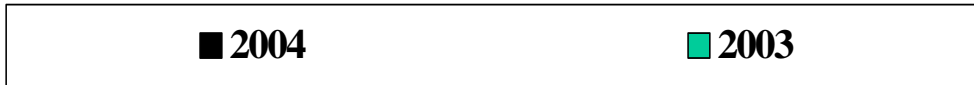
Goal Achievement in Federal Forms Submission Death Notices



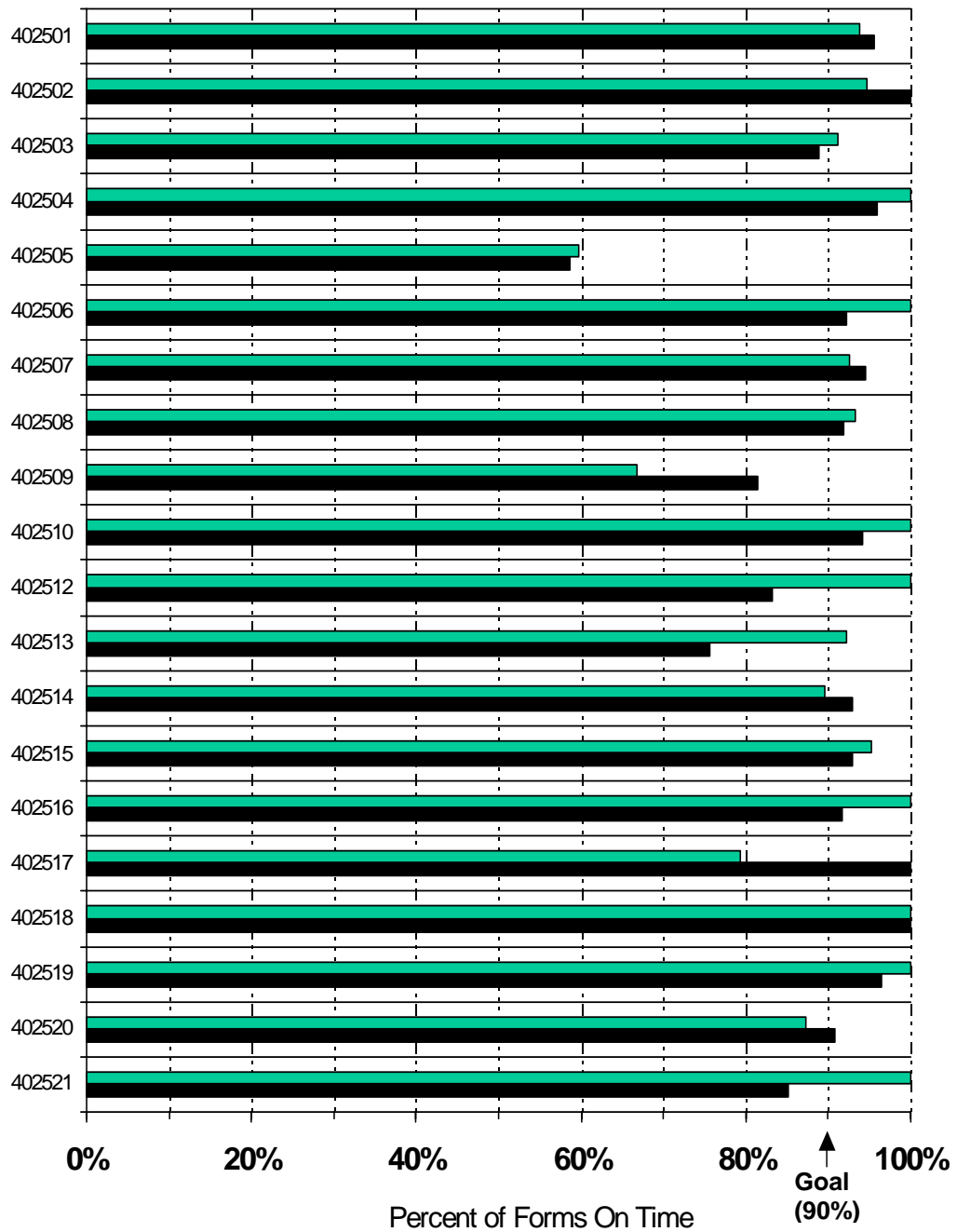
Facilities



Goal Achievement in Federal Forms Submission Death Notices



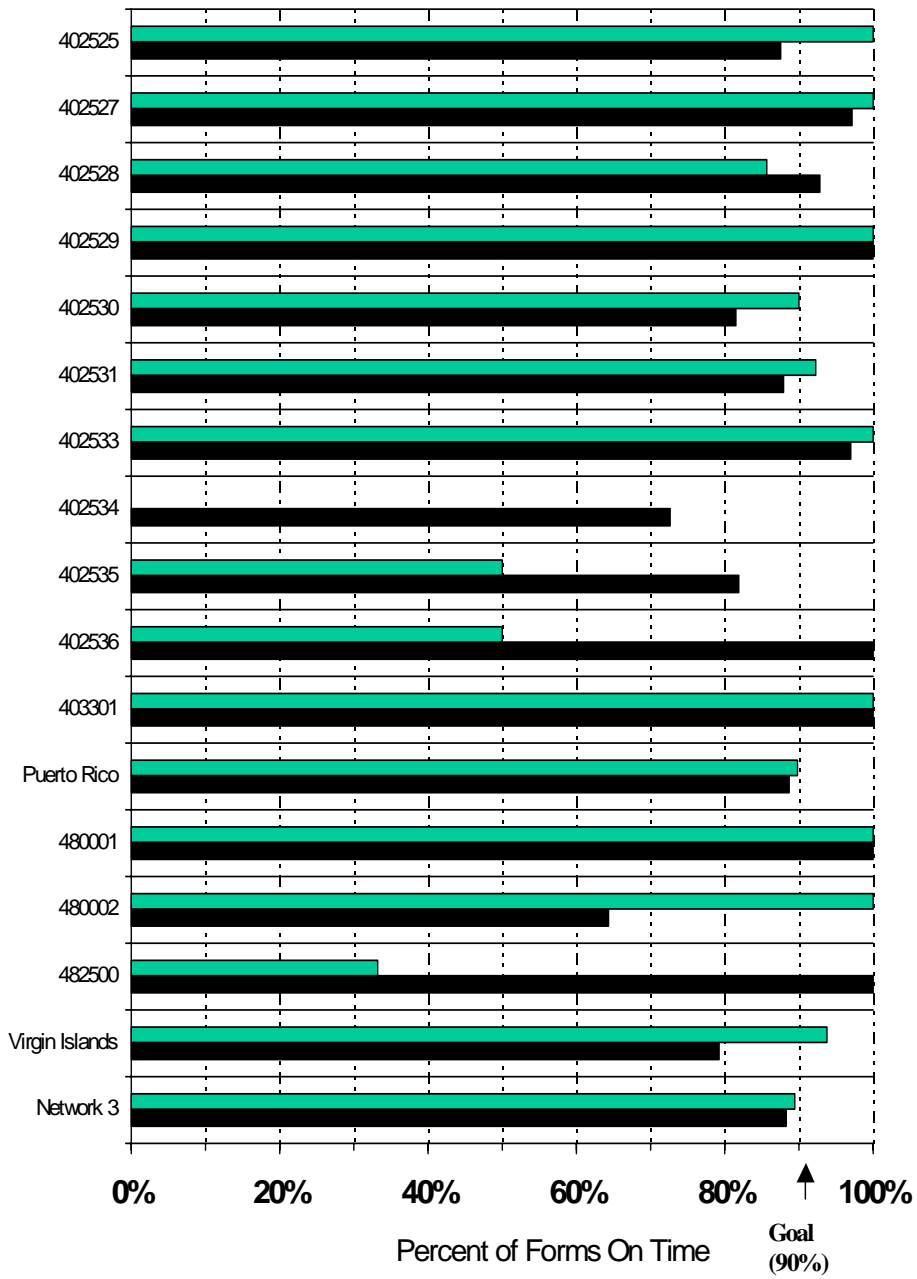
Facilities



Goal Achievement in Federal Forms Submission Death Notices



Facilities



7. APPENDIX: DATA MANAGEMENT

The Trans-Atlantic Renal Council data entry system is based on current client/server and Internet technologies. Over the last year, there have been major improvements made to the reliability, performance, and capacity of the network. This system is designed to serve the various needs of the Trans-Atlantic Renal Council, and to provide the ability to adapt new technologies into the network quickly.

There are seven Pentium IV computers, one Celeron computer, five Pentium III laptops, and one Pentium IV server in this network. The Pentium IV computers run at 1.8Ghz, and the Celeron runs at 500Mhz. Three laptops run at 730Mhz, one at 850Mhz and one at 933Mhz. The SIMS server has 1GB RAM and runs at 2Ghz. Every computer has a minimum of 128MB RAM, however seven have 256MB RAM, and one has 384MB RAM. The total hard disk capacity of the network exceeds 325 gigabytes.

The SIMS server runs Windows 2000 Server Service Pack 4. Eight workstations and the five laptops run Windows 2000 Professional Service Pack 4.

The network connectivity is achieved using Cisco, 3Com, and Netgear network components for the central connectivity, while IBM, 3Com, and Intel network cards are used to provide workstation and server access. All critical information is stored on these servers, and all servers are backed up nightly using digital tape technology a digital tape drive. The SIMS server uses Veritas Backup Exec version 9.0.

There are also three servers that are located at a remote secure hosting facility. These servers are used to host the TARC web site. The main web server is a Pentium III that runs at 500Mhz with dual processors, with 1GB RAM and 36GB of hard drive space, as well as its own digital tape backup system. The firewall is a Pentium III that runs at 800Mhz with 256MB RAM and a 60 GB hard drive for logging. The firewall server also runs a variant of the Slackware Linux operating system. The web server runs Windows 2000 Service Pack 4 as its operating system. In addition, there is a security server that handles authentication of users for the State Assistance Grant project. It is a Pentium III that runs at 866Mhz with 256MB RAM and a 4.3GB HD. This server also runs Windows 2000, Service Pack 4, and is on its own private network. It also runs RSA ACE/Server 4.2 for secure authentication using SecurID tokens.

There is one dedicated phone system computer. This is a 486 running DOS 6.2 that is not connected to the network. It only handles voicemail and the fax line, and it runs specialized phone system software. The computer has its own monitor, power system, and dedicated tasks.

There are six printers currently on the network. Five of them have their own network connections, while one of them is shared through a computer. The Hewlett-Packard Deskjet 4550N color laser printer, Lexmark Optra S1855, Hewlett-Packard Laserjet 8000DN, Lexmark C912, and Hewlett-Packard Laserjet 1100 are all utilized. Access is arbitrated to them through the file and database server using Windows 2000 Active Directory permissions. The Costar label printer is run through a workstation; it is used to print mailing labels. The printers are assigned by geographic location in the office, and also by demand of users based on job size.

They are entirely capable of handling the job throughput of the users, and the large amount of reports that the network generates.

All computers and servers have uninterruptible power supply devices. These allow for the shutdown of computers in case of a blackout and provide additional power in the case of a brownout. Their main purpose is to provide power for the computers when the standard power is unreliable.

All Internet connectivity is handled through a direct connection mandated by CMS using a private leased line connection to the government network, FTS 2001, which is run by Worldcom.

Most administrative tasks were accomplished using the Microsoft Office 2000 suite of products. The applications used were Microsoft Word, Microsoft Excel, Microsoft Access, and Microsoft PowerPoint. Another part of Office, Microsoft Outlook, is being used for electronic mail and in a scheduling/contact capability. All accounting is done in MIP NPS PRO Non-Profit Accounting For Windows, version 6.2. All information is standardized, and all incoming information is standardized. This allows for seamless sharing of resources. TimeClock Lyte is the electronic version of the standard time clock that every employee is required to use. This program itself is based on Microsoft Access.

Reporting and Statistical Analysis

Maintenance of the network's data is handled by the combination of SIMS and Microsoft SQL Server 2000 to handle the data, and Microsoft Access to generate reports on the data. Statistical analysis is done using SAS and Access. All presentations were prepared using PowerPoint. Internal data review uses Crystal Reports 9, Microsoft Access, Excel, and Word.

System Administration

Windows 2000 Server is used to administer the network, assign user passwords, manage printers, grant access to files, and manage the organization of all data. Backup Exec from Veritas Software is used to back up all data on the network.

For the web servers, a custom version of Linux is used for the firewall software, and Windows 2000 Server/Internet Information Server is used to serve web pages. In addition, RSA ACE/Server, which sits on top of Windows 2000 Server on the web network, is used for security and authentication.