

---

---

## **6. Data Tables**

### **A. Tables 1 - 8**

### **B. Detailed Goal Activity Tables**

ESRD NETWORK 3 TABLE #1	NEWLY DIAGNOSED CHRONIC ESRD PATIENTS (ESRD INCIDENCE)				
NEWLY DIAGNOSED CHRONIC ESRD PATIENTS BY STATE OF RESIDENCE, AGE, RACE, SEX, AND PRIMARY DIAGNOSIS FOR CALENDAR YEAR 2002					

	NJ	PR	VI	Other*	Total
<b>Age Group</b>					
00-04	3	3	0	2	8
05-09	6	0	0	0	6
10-14	8	1	1	0	10
15-19	13	10	1	1	25
20-24	18	15	2	0	35
25-29	39	29	1	0	69
30-34	64	23	2	3	92
35-39	101	49	1	3	154
40-44	160	56	3	1	220
45-49	207	82	1	1	291
50-54	225	113	3	3	344
55-59	284	146	7	4	441
60-64	308	160	9	3	480
65-69	371	164	4	7	546
70-74	400	139	3	1	543
75-79	432	106	3	6	547
80-84	358	85	0	3	446
>=85	243	48	1	2	294
Missing	0	0	0	0	0
<b>Total</b>	<b>3240</b>	<b>1229</b>	<b>42</b>	<b>40</b>	<b>4551</b>

<b>Gender</b>					
Female	1456	488	15	11	1970
Male	1784	741	27	29	2581
Missing	0	0	0	0	0
<b>Total</b>	<b>3240</b>	<b>1229</b>	<b>42</b>	<b>40</b>	<b>4551</b>

<b>Race</b>					
Asian	63	0	0	0	63
Black	1011	13	36	9	1069
Indian subcontinent	30	1	0	0	31
Mid-East Arabian	19	0	0	0	19
Native American	6	0	0	1	7
Other/Multiracial	114	874	5	0	993
Pacific Islander	12	0	0	0	12
White	1984	339	1	29	2353
Missing	1	0	0	1	2
Unknown	0	2	0	0	2
<b>Total</b>	<b>3240</b>	<b>1229</b>	<b>42</b>	<b>40</b>	<b>4551</b>

ESRD NETWORK 3 TABLE #1 (continued)	NEWLY DIAGNOSED CHRONIC ESRD PATIENTS (ESRD INCIDENCE)
NEWLY DIAGNOSED CHRONIC ESRD PATIENTS BY STATE OF RESIDENCE, AGE, RACE, SEX, AND PRIMARY DIAGNOSIS FOR CALENDAR YEAR 2002	

	NJ	PR	VI	Other*	Total
<b>Primary Diagnosis</b>					
Cystic Kidney	62	30	1	1	94
Diabetes	1369	775	18	13	2175
Glomerulonephritis	308	103	4	6	421
Hypertension	967	177	14	9	1167
Other	414	98	4	8	524
Other Urologic	42	27	0	1	70
Missing	1	0	0	1	2
Unknown	77	19	1	1	98
<b>Total</b>	<b>3240</b>	<b>1229</b>	<b>42</b>	<b>40</b>	<b>4551</b>

Source of information: Network SIMS Database

Date of Preparation: June 2003

Race: The categories are from the CMS-2728 Form.

Diagnosis: Categories are from the CMS-2728. A diagnosis of 'unknown' is ICD-9 code 7999.

This table cannot be compared to the CMS facility survey because the CMS Facility Survey is limited to dialysis patients receiving outpatient services from Medicare approved dialysis facilities.

This table includes 53 patients with transplant therapy as an initial treatment.

This table includes 76 patients receiving treatment at VA facilities.

\*Patients residing outside the Network area.

ESRD NETWORK 3 TABLE #2	LIVING ESRD DIALYSIS PATIENTS (ESRD DIALYSIS PREVALENCE)
ALL ACTIVE ESRD PATIENTS BY STATE OF RESIDENCE, AGE, RACE, SEX, AND PRIMARY DIAGNOSIS AS OF DECEMBER 31, 2002	

	NJ	PR	VI	Other*	Total
<b>Age Group</b>					
00-04	3	3	0	0	6
05-09	4	1	0	0	5
10-14	11	4	1	0	16
15-19	31	19	1	1	52
20-24	73	42	2	1	118
25-29	134	70	3	0	207
30-34	235	102	4	1	342
35-39	374	147	9	2	532
40-44	528	185	6	2	721
45-49	728	265	10	5	1008
50-54	759	367	10	10	1146
55-59	886	468	18	17	1389
60-64	1047	477	28	7	1559
65-69	1094	466	18	13	1591
70-74	1116	314	16	7	1453
75-79	1062	219	7	6	1294
80-84	751	122	2	3	878
>=85	413	54	2	4	473
Missing	0	0	0	0	0
<b>Total</b>	<b>9249</b>	<b>3325</b>	<b>137</b>	<b>79</b>	<b>12790</b>
<b>Gender</b>					
Female	4132	1241	47	42	5462
Male	5117	2084	90	37	7328
Missing	0	0	0	0	0
<b>Total</b>	<b>9249</b>	<b>3325</b>	<b>137</b>	<b>79</b>	<b>12790</b>
<b>Race</b>					
Asian	214	0	0	1	215
Black	3807	97	117	24	4045
Indian subcontinent	97	2	0	0	99
Mid-East Arabian	44	0	0	0	44
Native American	18	5	0	0	23
Other/Multiracial	388	2209	12	6	2615
Pacific Islander	40	0	0	0	40
White	4620	985	8	45	5658
Missing	3	1	0	1	5
Unknown	18	26	0	2	46
<b>Total</b>	<b>9249</b>	<b>3325</b>	<b>137</b>	<b>79</b>	<b>12790</b>

ESRD NETWORK 3 TABLE #2 (continued)	LIVING ESRD DIALYSIS PATIENTS (ESRD DIALYSIS PREVALENCE)
ALL ACTIVE ESRD PATIENTS BY STATE OF RESIDENCE, AGE, RACE, SEX, AND PRIMARY DIAGNOSIS AS OF DECEMBER 31, 2002	

	NJ	PR	VI	Other*	Total
<b>Primary Diagnosis</b>					
Cystic Kidney	264	98	6	1	369
Diabetes	3626	1750	61	25	5462
Glomerulonephritis	1313	539	12	16	1880
Hypertension	2693	527	50	22	3292
Other	965	225	6	9	1205
Other Urologic	173	75	1	1	250
Missing	11	1	0	1	13
Unknown	204	110	1	4	319
<b>Total</b>	<b>9249</b>	<b>3325</b>	<b>137</b>	<b>79</b>	<b>12790</b>

Source of information: Network SIMS Database

Date of Preparation: June 2003

Race: The categories are from the CMS-2728 Form.

Diagnosis: Categories are from the CMS-2728. A diagnosis of 'unknown' is ICD-9 code 7999.

This table cannot be compared to the CMS facility survey because the CMS Facility Survey is limited to dialysis patients receiving outpatient services from Medicare approved dialysis facilities.

The numbers may not reflect the true point prevalence due to different definitions for transient patients.

This table includes 97 patients receiving treatment at VA facilities.

\*Patients residing outside the Network area.

ESRD Network 3 TABLE #3		DIALYSIS MODALITY								
NUMBER OF LIVING PATIENTS BY MODALITY** BY DIALYSIS FACILITY <b>SELF-CARE SETTINGS - HOME</b> ON DECEMBER 31, 2001 AND DECEMBER 31, 2002 <b>New Jersey</b>										
Provider	SELF-CARE SETTING - HOME:								TOTAL	
	HEMO		CAPD		CCPD		IPD			
	2001	2002	2001	2002	2001	2002	2001	2002	2001	2002
310001	0	0	0	0	5	3	0	0	5	3
310002	5	5	9	9	14	17	0	0	28	31
310008	2	1	0	0	0	0	0	0	2	1
310012	0	0	0	0	0	0	0	0	0	0
310014#	0	0	0	0	0	0	0	0	0	0
310015	1	1	4	8	12	11	0	0	17	20
310017	0	0	0	0	0	0	0	0	0	0
310019	1	0	0	0	0	1	0	0	1	1
31001F	0	0	0	2	1	1	0	0	1	3
310025	0	0	0	0	0	0	0	0	0	0
310027	0	0	4	3	2	2	0	0	6	5
310029	0	0	1	1	20	22	0	0	21	23
310032	0	0	9	6	17	14	0	0	26	20
310034	0	0	0	0	0	0	0	0	0	0
310038	0	0	0	0	0	0	0	0	0	0
310047	0	0	5	5	3	1	0	0	8	6
310052	0	0	0	0	10	4	0	0	10	4
310054	0	0	5	5	2	3	0	0	7	8
310063^	1	0	4	0	8	0	0	0	13	0
310064	0	0	6	6	11	4	0	0	17	10
310073	0	0	0	1	1	0	0	0	1	1
310074	0	0	0	0	0	0	0	0	0	0
310075	0	0	0	0	0	0	0	0	0	0
310076	7	6	7	7	23	21	0	0	37	34
310077	0	0	0	0	0	0	0	0	0	0
310083	0	0	0	0	0	0	0	0	0	0
310086	0	0	0	0	0	0	0	0	0	0
310092	0	0	13	10	25	23	0	0	38	33
310096	0	0	4	7	1	0	0	0	5	7
312332	0	0	0	0	0	0	0	0	0	0
312501	0	0	0	0	0	0	0	0	0	0
312502	0	0	0	0	0	1	0	0	0	1
312503	2	1	0	0	0	0	0	0	2	1
312504	0	0	0	0	0	0	0	0	0	0
312505	0	0	0	0	0	0	0	0	0	0
312506	0	0	0	0	0	0	0	0	0	0
312508	0	0	3	2	19	14	0	0	22	16

ESRD Network 3 TABLE #3		DIALYSIS MODALITY									
NUMBER OF LIVING PATIENTS BY MODALITY** BY DIALYSIS FACILITY <b>SELF-CARE SETTINGS - HOME</b> ON DECEMBER 31, 2001 AND DECEMBER 31, 2002 <b>New Jersey</b>											
Provider	SELF-CARE SETTING - HOME:								TOTAL		
	HEMO		CAPD		CCPD		IPD				
	2001	2002	2001	2002	2001	2002	2001	2002	2001	2002	
312509	2	3	13	10	12	11	0	0	27	24	
312510	0	0	4	5	4	8	0	0	8	13	
312511	0	0	0	0	0	0	0	0	0	0	
312512	0	0	0	0	1	1	0	0	1	1	
312513	0	0	10	12	12	10	0	0	22	22	
312514	0	0	0	0	0	0	0	0	0	0	
312515	0	0	0	0	0	0	0	0	0	0	
312516	0	0	0	0	0	0	0	0	0	0	
312517	0	0	0	0	0	0	0	0	0	0	
312518	0	0	0	3	0	0	0	0	0	3	
312519	0	0	20	19	10	10	0	0	30	29	
312520	0	0	1	5	8	7	0	0	9	12	
312521	0	0	0	0	0	0	0	0	0	0	
312522	0	0	0	0	0	0	0	0	0	0	
312523	0	0	1	1	2	1	0	0	3	2	
312524	0	0	12	19	22	16	0	0	34	35	
312525	0	0	3	5	92	92	0	0	95	97	
312526	0	0	5	4	5	5	0	0	10	9	
312527	0	0	0	0	0	0	0	0	0	0	
312528	0	0	7	3	17	18	0	0	24	21	
312529	0	0	0	0	0	0	0	0	0	0	
312530	1	0	7	6	5	6	0	0	13	12	
312531	0	0	3	0	6	4	0	0	9	4	
312532	0	0	0	0	0	0	0	0	0	0	
312533	0	0	0	0	0	0	0	0	0	0	
312534	0	0	0	3	0	2	0	0	0	5	
312535	1	0	0	0	0	0	0	0	1	0	
312536	1	1	20	17	20	21	0	0	41	39	
312537	0	0	22	14	16	14	0	0	38	28	
312538	0	0	0	0	0	0	0	0	0	0	
312539	0	0	0	0	0	0	0	0	0	0	
312540	0	0	6	0	5	0	0	0	11	0	
312541	0	0	0	0	0	0	0	0	0	0	
312542	0	0	0	0	0	0	0	0	0	0	
312543	0	0	0	0	0	0	0	0	0	0	
312544	0	0	0	0	0	0	0	0	0	0	
312545	0	0	1	5	6	8	0	0	7	13	
312546	0	0	0	0	0	0	0	0	0	0	
312547	0	0	2	1	0	0	0	0	2	1	

ESRD Network 3 TABLE #3		DIALYSIS MODALITY									
NUMBER OF LIVING PATIENTS BY MODALITY** BY DIALYSIS FACILITY <b>SELF-CARE SETTINGS - HOME</b> ON DECEMBER 31, 2001 AND DECEMBER 31, 2002 <b>New Jersey</b>											
Provider	SELF-CARE SETTING - HOME:								TOTAL		
	HEMO		CAPD		CCPD		IPD				
	2001	2002	2001	2002	2001	2002	2001	2002	2001	2002	
312548	0	0	0	0	0	0	0	0	0	0	0
312549	0	0	0	0	0	0	0	0	0	0	0
312550	0	0	0	1	0	0	0	0	0	0	1
312551	0	0	2	5	1	8	0	0	3	13	
312552	0	0	0	0	0	0	0	0	0	0	0
312553	0	0	0	0	0	0	0	0	0	0	0
312554	0	0	0	0	0	0	0	0	0	0	0
312555	0	0	0	0	0	0	0	0	0	0	0
312556	0	0	0	0	0	0	0	0	0	0	0
312557	0	0	0	0	0	0	0	0	0	0	0
312558	0	0	0	2	0	3	0	0	0	0	5
312559	0	0	0	9	0	3	0	0	0	0	12
312560#	0	0	0	0	0	0	0	0	0	0	0
312561#	0	0	0	0	0	0	0	0	0	0	0
312562#	0	0	0	0	0	0	0	0	0	0	0
312563#	0	0	0	0	0	0	0	0	0	0	0
312564#	0	0	0	0	0	0	0	0	0	0	0
312565#	0	0	0	0	0	0	0	0	0	0	0
313500	0	0	0	0	0	0	0	0	0	0	0
313501	0	0	11	10	7	6	0	0	18	16	
313502	0	0	0	0	0	0	0	0	0	0	0
313503	0	0	0	0	0	0	0	0	0	0	0
313505	0	0	0	0	0	0	0	0	0	0	0
313507	0	0	0	0	0	0	0	0	0	0	0
313511	0	0	3	2	27	16	0	0	30	18	
313512#	0	0	0	0	0	0	0	0	0	0	0
313514#	0	0	0	0	0	0	0	0	0	0	0
<b>NJ Total</b>	<b>24</b>	<b>18</b>	<b>227</b>	<b>233</b>	<b>452</b>	<b>412</b>	<b>0</b>	<b>0</b>	<b>703</b>	<b>663</b>	



ESRD Network 3 TABLE #3		DIALYSIS MODALITY									
NUMBER OF LIVING PATIENTS BY MODALITY** BY DIALYSIS FACILITY <b>SELF-CARE SETTINGS - HOME</b> ON DECEMBER 31, 2001 AND DECEMBER 31, 2002 Puerto Rico											
Provider	SELF-CARE SETTING - HOME:								TOTAL		
	HEMO		CAPD		CCPD		IPD				
	2001	2002	2001	2002	2001	2002	2001	2002	2001	2002	
400007	0	0	0	0	0	0	0	0	0	0	0
400009	0	0	0	0	0	0	0	0	0	0	0
400013#	0	0	0	1	0	9	0	0	0	0	10
400021	0	0	0	0	0	0	0	0	0	0	0
400022	0	0	0	0	0	0	0	0	0	0	0
40003F	1	1	0	0	5	6	0	0	6	7	
400044	0	0	0	0	0	0	0	0	0	0	0
400061	0	0	7	5	1	0	0	3	8	8	
400118	0	0	2	4	11	11	0	0	13	15	
402501	3	0	0	0	0	0	0	0	3	0	
402502	1	1	0	0	0	0	0	0	1	1	
402503	0	0	4	3	18	26	0	0	22	29	
402504	2	1	6	5	5	13	0	0	13	19	
402505	0	0	3	2	26	21	0	0	29	23	
402506	0	0	0	0	0	0	0	0	0	0	
402507	0	0	0	0	0	0	0	0	0	0	
402508	0	0	21	17	5	12	0	0	26	29	
402509	0	0	0	0	0	0	0	0	0	0	
402510	0	0	8	2	45	39	2	1	55	42	
402512	0	0	6	7	22	19	0	0	28	26	
402513	0	0	0	0	10	17	0	0	10	17	
402514	0	0	0	0	0	0	0	0	0	0	
402515	0	0	0	0	0	0	0	0	0	0	
402516	0	0	0	0	2	3	0	0	2	3	
402517	0	0	3	3	15	24	0	0	18	27	
402518	0	0	6	6	11	10	0	0	17	16	
402519	0	0	8	5	22	15	0	0	30	20	
402520	0	0	0	0	8	7	0	0	8	7	
402521	0	0	0	0	0	0	0	0	0	0	
402522	0	0	17	0	90	0	0	0	107	0	
402523	0	0	1	0	13	0	0	0	14	0	
402524	0	0	1	0	1	0	0	0	2	0	
402525	0	0	0	0	0	0	0	0	0	0	
402526#	0	0	0	0	0	4	0	0	0	4	
402527#	0	0	0	0	0	0	0	0	0	0	
402528#	0	0	0	2	0	20	0	0	0	22	
402529#	0	0	0	0	0	0	0	0	0	0	
402530#	0	0	0	19	0	73	0	0	0	92	

ESRD Network 3 TABLE #3		DIALYSIS MODALITY									
NUMBER OF LIVING PATIENTS BY MODALITY** BY DIALYSIS FACILITY <b>SELF-CARE SETTINGS - HOME</b> ON DECEMBER 31, 2001 AND DECEMBER 31, 2002 <b>Puerto Rico</b>											
Provider	SELF-CARE SETTING - HOME:								TOTAL		
	HEMO		CAPD		CCPD		IPD				
	2001	2002	2001	2002	2001	2002	2001	2002	2001	2002	
402531#	0	0	0	0	0	6	0	0	0	6	
402533#	0	0	0	0	0	0	0	0	0	0	
403301	0	0	0	0	8	3	0	0	8	3	
<b>PR Total</b>	<b>7</b>	<b>3</b>	<b>93</b>	<b>81</b>	<b>318</b>	<b>338</b>	<b>2</b>	<b>4</b>	<b>420</b>	<b>426</b>	

ESRD Network 3 TABLE #3		DIALYSIS MODALITY									
NUMBER OF LIVING PATIENTS BY MODALITY** BY DIALYSIS FACILITY <b>SELF-CARE SETTINGS - HOME</b> ON DECEMBER 31, 2001 AND DECEMBER 31, 2002 <b>U.S. Virgin Islands</b>											
Provider	SELF-CARE SETTING - HOME:								TOTAL		
	HEMO		CAPD		CCPD		IPD				
	2001	2002	2001	2002	2001	2002	2001	2002	2001	2002	
480001	0	0	0	0	0	0	0	0	0	0	
480002	0	0	0	0	0	0	0	0	0	0	
<b>VI Total</b>	<b>0</b>	<b>0</b>	<b>0</b>	<b>0</b>	<b>0</b>	<b>0</b>	<b>0</b>	<b>0</b>	<b>0</b>	<b>0</b>	
<b>Network Total</b>	<b>31</b>	<b>21</b>	<b>320</b>	<b>314</b>	<b>770</b>	<b>750</b>	<b>2</b>	<b>4</b>	<b>1123</b>	<b>1089</b>	

Source of Information: Facility Survey (CMS 2744) and Network SIMS Database

Date of Preparation: June 2003

This table cannot be compared to the CMS Facility Survey because the CMS Facility Survey is limited to dialysis patients receiving outpatient services from Medicare approved dialysis facilities. This table includes 7 Veterans Affairs Facility patients for 2001 and 10 Veterans Affairs Facility patients for 2002.

\*\*Includes those in training at year end.

# Provider not operational in 2001

^ Provider not operational in 2002

ESRD Network 3 TABLE #4		DIALYSIS MODALITY							
NUMBER OF LIVING PATIENTS BY MODALITY BY DIALYSIS FACILITY <b>IN-CENTER</b> ON DECEMBER 31, 2001 AND DECEMBER 31, 2002 <b>New Jersey</b>									
PROVIDER	IN-CENTER				TOTAL IN-CENTER		TOTAL OF HOME & IN-CENTER		
	HEMO		PD		2001	2002	2001	2002	
	2001	2002	2001	2002					
310001	258	247	0	0	258	247	263	250	
310002	117	125	0	0	117	125	145	156	
310008	232	229	0	0	232	229	234	230	
310012	100	4	0	0	100	4	100	4	
310014#	0	0	0	0	0	0	0	0	
310015	120	120	0	0	120	120	137	140	
310017	0	30	0	0	0	30	0	30	
310019	318	18	0	0	318	18	319	19	
31001F	46	45	0	0	46	45	47	48	
310025	90	73	0	0	90	73	90	73	
310027	146	142	0	0	146	142	152	147	
310029	153	142	0	0	153	142	174	165	
310032	91	113	0	0	91	113	117	133	
310034	29	32	0	0	29	32	29	32	
310038	45	46	0	0	45	46	45	46	
310047	151	148	0	0	151	148	159	154	
310052	121	85	0	0	121	85	131	89	
310054	117	133	0	0	117	133	124	141	
310063^	123	0	0	0	123	0	136	0	
310064	65	65	0	0	65	65	82	75	
310073	98	97	0	0	98	97	99	98	
310074	79	74	0	0	79	74	79	74	
310075	20	17	0	0	20	17	20	17	
310076	214	205	0	0	214	205	251	239	
310077	37	36	0	0	37	36	37	36	
310083	168	162	0	0	168	162	168	162	
310086	143	153	0	0	143	153	143	153	
310092	127	141	1	0	128	141	166	174	
310096	73	67	0	0	73	67	78	74	
312332	159	0	0	0	159	0	159	0	
312334^	0	0	0	0	0	0	0	0	
312501	198	202	0	0	198	202	198	202	
312502	181	171	3	0	184	171	184	172	
312503	49	35	0	0	49	35	51	36	
312504	122	113	0	0	122	113	122	113	
312505	106	120	0	0	106	120	106	120	

ESRD Network 3 TABLE #4		DIALYSIS MODALITY							
NUMBER OF LIVING PATIENTS BY MODALITY BY DIALYSIS FACILITY <b>IN-CENTER</b> ON DECEMBER 31, 2001 AND DECEMBER 31, 2002 <b>New Jersey</b>									
PROVIDER	IN-CENTER				TOTAL IN-CENTER		TOTAL OF HOME & IN-CENTER		
	HEMO		PD		2001	2002	2001	2002	
	2001	2002	2001	2002					
312506	100	100	0	0	100	100	100	100	
312508	125	136	1	0	126	136	148	152	
312509	185	174	0	0	185	174	212	198	
312510	56	54	0	0	56	54	64	67	
312511	0	66	0	0	0	66	0	66	
312512	33	33	0	0	33	33	34	34	
312513	112	115	0	0	112	115	134	137	
312514	48	53	0	0	48	53	48	53	
312515	56	55	0	0	56	55	56	55	
312516	30	23	0	0	30	23	30	23	
312517	58	59	0	0	58	59	58	59	
312518	75	77	0	0	75	77	75	80	
312519	0	0	0	0	0	0	30	29	
312520	61	63	0	0	61	63	70	75	
312521	72	73	0	0	72	73	72	73	
312522	108	96	0	0	108	96	108	96	
312523	78	74	0	0	78	74	81	76	
312524	0	0	0	0	0	0	34	35	
312525	166	167	0	0	166	167	261	264	
312526	0	0	0	0	0	0	10	9	
312527	90	96	0	0	90	96	90	96	
312528	98	96	0	0	98	96	122	117	
312529	76	77	0	0	76	77	76	77	
312530	89	83	0	0	89	83	102	95	
312531	68	57	2	0	70	57	79	61	
312532	94	95	0	0	94	95	94	95	
312533	131	137	0	0	131	137	131	137	
312534	76	69	4	0	80	69	80	74	
312535	45	42	0	0	45	42	46	42	
312536	92	88	0	0	92	88	133	127	
312537	134	125	0	0	134	125	172	153	
312538	67	64	0	0	67	64	67	64	
312539	41	22	0	0	41	22	41	22	
312540	137	125	0	0	137	125	148	125	
312541	56	58	0	0	56	58	56	58	

ESRD Network 3 TABLE #4		DIALYSIS MODALITY							
NUMBER OF LIVING PATIENTS BY MODALITY BY DIALYSIS FACILITY <b>IN-CENTER</b> ON DECEMBER 31, 2001 AND DECEMBER 31, 2002 <b>New Jersey</b>									
PROVIDER	IN-CENTER				TOTAL IN-CENTER		TOTAL OF HOME & IN-CENTER		
	HEMO		PD		2001	2002	2001	2002	
	2001	2002	2001	2002					
312542	115	107	0	0	115	107	115	107	
312543	93	77	0	0	93	77	93	77	
312544	51	52	0	0	51	52	51	52	
312545	76	79	0	0	76	79	83	92	
312546	151	128	0	0	151	128	151	128	
312547	21	22	0	0	21	22	23	23	
312548	64	71	0	0	64	71	64	71	
312549	44	46	0	0	44	46	44	46	
312550	37	42	0	0	37	42	37	43	
312551	77	74	0	0	77	74	80	87	
312552	68	76	0	0	68	76	68	76	
312553	69	69	0	0	69	69	69	69	
312554	74	86	0	0	74	86	74	86	
312555	60	67	0	0	60	67	60	67	
312556	28	35	0	0	28	35	28	35	
312557	23	63	0	0	23	63	23	63	
312558	1	140	0	0	1	140	1	145	
312559	6	54	0	0	6	54	6	66	
312560#	0	173	0	0	0	173	0	173	
312561#	0	38	0	0	0	38	0	38	
312562#	0	13	0	0	0	13	0	13	
312563#	0	38	0	0	0	38	0	38	
312564#	0	42	0	0	0	42	0	42	
312565#	0	14	0	0	0	14	0	14	
313500	124	123	0	0	124	123	124	123	
313501	63	67	0	0	63	67	81	83	
313502	57	60	0	0	57	60	57	60	
313503	86	84	0	0	86	84	86	84	
313505	120	119	0	0	120	119	120	119	
313507	98	95	0	0	98	95	98	95	
313511	7	348	0	0	7	348	37	366	
313512#	0	0	0	0	0	0	0	0	
313514#	0	131	0	0	0	131	0	131	
<b>NJ Total</b>	<b>8366</b>	<b>8675</b>	<b>11</b>	<b>0</b>	<b>8377</b>	<b>8675</b>	<b>9080</b>	<b>9338</b>	

ESRD Network 3 TABLE #4		DIALYSIS MODALITY							
NUMBER OF LIVING PATIENTS BY MODALITY BY DIALYSIS FACILITY <b>IN-CENTER</b> ON DECEMBER 31, 2001 AND DECEMBER 31, 2002 <b>Puerto Rico</b>									
PROVIDER	IN-CENTER				TOTAL IN-CENTER		TOTAL OF HOME & IN-CENTER*		
	HEMO		PD		2001	2002	2001	2002	
	2001	2002	2001	2002					
400007	0	1	0	0	0	1	0	1	
400009	10	14	0	0	10	14	10	14	
400013#	0	45	0	0	0	45	0	55	
400021	0	0	0	0	0	0	0	0	
400022	2	0	0	0	2	0	2	0	
40003F	28	42	0	0	28	42	34	49	
400044	1	1	0	0	1	1	1	1	
400061	88	85	4	4	92	89	100	97	
400118	42	1	0	0	42	1	55	16	
402501	57	60	0	0	57	60	60	60	
402502	68	63	0	0	68	63	69	64	
402503	201	134	0	1	201	135	223	164	
402504	164	147	0	0	164	147	177	166	
402505	177	177	0	0	177	177	206	200	
402506	61	64	0	0	61	64	61	64	
402507	165	171	0	0	165	171	165	171	
402508	171	164	0	0	171	164	197	193	
402509	60	56	0	0	60	56	60	56	
402510	105	103	0	0	105	103	160	145	
402512	53	50	1	0	54	50	82	76	
402513	122	91	0	0	122	91	132	108	
402514	141	135	0	0	141	135	141	135	
402515	107	101	0	0	107	101	107	101	
402516	65	69	0	0	65	69	67	72	
402517	107	121	0	0	107	121	125	148	
402518	130	119	0	0	130	119	147	135	
402519	82	94	0	0	82	94	112	114	
402520	109	118	1	0	110	118	118	125	
402521	81	78	0	0	81	78	81	78	
402522	292	0	4	0	296	0	403	0	
402523	57	0	0	0	57	0	71	0	
402524	59	0	2	0	61	0	63	0	
402525	30	69	0	0	30	69	30	69	
402526#	0	0	0	0	0	0	0	4	
402527#	0	45	0	0	0	45	0	45	
402528#	0	64	0	1	0	65	0	87	
402529#	0	31	0	0	0	31	0	31	

ESRD Network 3 TABLE #4		DIALYSIS MODALITY							
NUMBER OF LIVING PATIENTS BY MODALITY BY DIALYSIS FACILITY <b>IN-CENTER</b> ON DECEMBER 31, 2001 AND DECEMBER 31, 2002 <b>Puerto Rico</b>									
PROVIDER	IN-CENTER				TOTAL IN-CENTER		TOTAL OF HOME & IN-CENTER*		
	HEMO		PD		2001	2002	2001	2002	
	2001	2002	2001	2002					
402530#	0	276	0	0	0	276	0	368	
402531#	0	65	0	0	0	65	0	71	
402533#	0	69	0	0	0	69	0	69	
403301	7	11	0	0	7	11	15	14	
<b>PR Total</b>	<b>2842</b>	<b>2934</b>	<b>12</b>	<b>6</b>	<b>2854</b>	<b>2940</b>	<b>3274</b>	<b>3366</b>	

ESRD Network 3 TABLE #4		DIALYSIS MODALITY							
NUMBER OF LIVING PATIENTS BY MODALITY BY DIALYSIS FACILITY <b>IN-CENTER</b> ON DECEMBER 31, 2001 AND DECEMBER 31, 2002 <b>U.S. Virgin Islands</b>									
PROVIDER	IN-CENTER				TOTAL IN-CENTER		TOTAL OF HOME & IN-CENTER*		
	HEMO		PD		2001	2002	2001	2002	
	2001	2002	2001	2002					
480001	57	61	0	0	57	61	57	61	
480002	65	75	0	0	65	75	65	75	
<b>VI Total</b>	<b>122</b>	<b>136</b>	<b>0</b>	<b>0</b>	<b>122</b>	<b>136</b>	<b>122</b>	<b>136</b>	
<b>Network</b>	<b>11330</b>	<b>11745</b>	<b>23</b>	<b>6</b>	<b>11353</b>	<b>11751</b>	<b>12476</b>	<b>12840</b>	
<b>Total</b>									

Source of Information: Facility Survey (CMS 2744) and Network SIMS Database

\*Total from Table #3 plus total from Table #4 (for last column of report year)

Date of Preparation: June 2003

This table cannot be compared to the CMS Facility Survey because the CMS Facility Survey is limited to only Medicare approved facilities. This table includes 74 Veterans Affairs Facility patients for 2001 and 87 Veterans Affairs Facility patients for 2002.

# Provider not operational in 2001

^ Provider not operational in 2002

ESRD NETWORK 3 TABLE #5		RENAL TRANSPLANTS: TRANSPLANTS PERFORMED IN 2001 AND 2002			
NUMBER TRANSPLANTS PERFORMED BY TRANSPLANT CENTER CALENDAR YEAR 2001 AND CALENDAR YEAR 2002					
TRANSPLANT CENTER	TOTAL TRANSPLANTS PERFORMED		PATIENTS WAITING FOR TRANSPLANT*		
	2001	2002	2001	2002	
310001	52	41	233	232	
310002	40	27	274	284	
310029	53	40	389	391	
310038	72	70	301	390	
310076	169	185	887	829	
<b>NJ Total</b>	386	363			
400016	91	68	354	354	
<b>PR Total</b>	91	68			
<b>NETWORK TOTAL</b>	477	431			

Source of information: Network SIMS Database/CMS-2744

Date of Preparation: June 2003

\* These numbers are not added to State or Network totals because some patients may be placed on more than one waiting list. The numbers are only accurate for each center.

# Provider not operational in 2001

^ Provider not operational in 2002



ESRD NETWORK 3 TABLE #6	RENAL TRANSPLANTS: TRANSPLANT RECIPIENTS FOR TRANSPLANT CENTERS WITHIN THE NETWORK AREA			
	RENAL TRANSPLANT RECIPIENTS BY TRANSPLANT TYPE, AGE, RACE, SEX, AND PRIMARY DIAGNOSIS FOR CALENDAR YEAR 2002			
	CADAVERIC	LIVING RELATED	LIVING UNRELATED	Total
<b>Age Group</b>				
00-04	1	4	0	5
05-09	1	5	1	7
10-14	5	3	0	8
15-19	10	7	0	17
20-24	3	5	0	8
25-29	6	12	3	21
30-34	19	17	3	39
35-39	16	19	4	39
40-44	23	13	6	42
45-49	22	8	19	49
50-54	41	16	9	66
55-59	31	10	8	49
60-64	20	10	3	33
65-69	16	7	1	24
70-74	12	2	0	14
75-79	9	0	2	11
80-84	1	0	0	1
>=85	1	0	0	1
Missing	0	0	0	0
<b>Total</b>	<b>237</b>	<b>138</b>	<b>59</b>	<b>434</b>
<b>Gender</b>				
Female	93	56	24	173
Male	144	82	35	261
Missing	0	0	0	0
<b>Total</b>	<b>237</b>	<b>138</b>	<b>59</b>	<b>434</b>
<b>Race</b>				
Asian	3	6	3	12
Black	56	24	3	83
Indian subcontinent	1	2	0	3
Mid-East Arabian	0	0	0	0
Native American	0	1	0	1
Other/Multiracial	34	24	5	63
Pacific Islander	0	0	0	0
White	140	80	48	268
Missing	0	0	0	0
Unknown	3	1	0	4
<b>Total</b>	<b>237</b>	<b>138</b>	<b>59</b>	<b>434</b>

ESRD NETWORK 3 TABLE #6	RENAL TRANSPLANTS: TRANSPLANT RECIPIENTS FOR TRANSPLANT CENTERS WITHIN THE NETWORK AREA			
RENAL TRANSPLANT RECIPIENTS BY TRANSPLANT TYPE, AGE, RACE, SEX, AND PRIMARY DIAGNOSIS FOR CALENDAR YEAR 2002				
	CADAVERIC	LIVING RELATED	LIVING UNRELATED	Total
<b>Primary Diagnosis</b>				
Cystic Kidney	23	7	17	47
Diabetes	50	36	15	101
Glomerulonephritis	71	49	11	131
Hypertension	37	19	8	64
Other	40	21	5	66
Other Urologic	6	3	0	9
Missing	5	0	1	6
Unknown	5	3	2	10
<b>Total</b>	<b>237</b>	<b>138</b>	<b>59</b>	<b>434</b>

Source of information: Network SIMS Database

Date of Preparation: June 2003

Race: The categories are from the CMS-2728 Form.

Diagnosis: Categories are from the CMS-2728. A diagnosis of 'unknown' is ICD-9 code 7999.

This table includes 0 patients receiving treatment at VA facilities.

ESRD NETWORK 3 TABLE #7	DIALYSIS DEATHS				
DEATHS OF DIALYSIS PATIENTS BY STATE RESIDENCE, AGE, RACE, SEX, PRIMARY DIAGNOSIS, AND CAUSE FOR CALENDAR YEAR 2002					
	NJ	PR	VI	Other	Total
<b>Age Group</b>					
00-04	1	0	0	1	2
05-09	0	0	0	0	0
10-14	1	0	0	0	1
15-19	1	1	0	1	3
20-24	3	4	0	0	7
25-29	7	7	0	0	14
30-34	13	7	0	0	20
35-39	31	18	1	0	50
40-44	68	31	0	1	100
45-49	96	48	1	2	147
50-54	126	70	2	1	199
55-59	183	113	3	7	306
60-64	203	161	2	5	371
65-69	278	145	2	9	434
70-74	380	128	3	7	518
75-79	436	122	6	12	576
80-84	390	80	0	5	475
>=85	319	56	1	7	383
Missing	0	0	0	0	0
<b>Total</b>	<b>2536</b>	<b>991</b>	<b>21</b>	<b>58</b>	<b>3606</b>
<b>Gender</b>					
Female	1204	432	8	20	1664
Male	1332	559	13	38	1942
Missing	0	0	0	0	0
<b>Total</b>	<b>2536</b>	<b>991</b>	<b>21</b>	<b>58</b>	<b>3606</b>
<b>Race</b>					
Asian	30	1	0	1	32
Black	748	28	19	12	807
Indian subcontinent	14	0	0	0	14
Mid-East Arabian	6	0	0	0	6
Native American	6	1	0	0	7
Other/Multiracial	69	687	0	4	760
Pacific Islander	6	0	0	0	6
White	1654	264	2	41	1961
Missing	0	0	0	0	0
Unknown	3	10	0	0	13
<b>Total</b>	<b>2536</b>	<b>991</b>	<b>21</b>	<b>58</b>	<b>3606</b>

ESRD NETWORK 3 TABLE #7	DIALYSIS DEATHS				
DEATHS OF DIALYSIS PATIENTS BY STATE RESIDENCE, AGE, RACE, SEX, PRIMARY DIAGNOSIS, AND CAUSE FOR CALENDAR YEAR 2002					
	NJ	PR	VI	Other	Total
<b>Primary Diagnosis</b>					
Cystic Kidney	35	26	0	2	63
Diabetes	1100	625	14	25	1764
Glomerulonephritis	207	90	0	8	305
Hypertension	778	143	4	14	939
Other	289	66	3	5	363
Other Urologic	37	21	0	1	59
Missing	28	4	0	2	34
Unknown	62	16	0	1	79
<b>Total</b>	<b>2536</b>	<b>991</b>	<b>21</b>	<b>58</b>	<b>3606</b>
<b>Primary Cause of Death</b>					
Cardiac	1261	354	11	25	1651
Gastro Intestinal	40	19	1	1	61
Infection	517	321	5	13	856
Liver Disease	27	12	0	0	39
Vascular	222	93	1	4	320
Missing	5	9	0	0	14
Other	339	85	3	11	438
Unknown	125	98	0	4	227
<b>Total</b>	<b>2536</b>	<b>991</b>	<b>21</b>	<b>58</b>	<b>3606</b>

Source of information: Network SIMS Database

Date of Preparation: June 2003

Race: The categories are from the CMS-2728 Form.

Diagnosis: Categories are from the CMS-2728. A diagnosis of 'unknown' is ICD-9 code 7999.

This table cannot be compared to the CMS Facility Survey because the CMS Facility Survey is limited to those deaths reported by only Medicare-approved facilities.

This table includes 23 patients receiving treatment at VA facilities.

\*Patients residing outside the Network area

ESRD Network 3  
TABLE #8

## VOCATIONAL REHABILITATION

VOCATIONAL REHABILITATION BY DIALYSIS FACILITY  
PATIENTS AGED 18 - 54 AS OF DECEMBER 31, 2002

Provider	Number of Dialysis pts age 18-54	Number of dialysis patients receiving services from Voc Rehab and other Voc Rehab related Service Providers	Number of dialysis pts employed full- time or part-time	Number of dialysis pts attending school full-time or part-time	Offers Dialysis shift starting at 5pm or later	
					Yes	No
310001	53	5	19	2	1	0
310002	80	3	16	2	1	0
310008	55	1	31	2	1	0
310012	1	0	5	2	0	1
310015	30	0	17	3	1	0
310017	5	0	0	0	1	0
310019	9	0	1	0	1	0
310025	24	0	3	0	1	0
310027	51	0	8	2	1	0
310029	66	7	23	4	1	0
310032	42	4	9	1	1	0
310034	12	0	6	0	1	0
310038	18	0	4	0	1	0
310047	39	2	19	1	1	0
310052	16	2	16	2	0	1
310054	34	0	10	0	1	0
310064	30	2	6	2	0	1
310073	39	5	12	2	1	0
310074	41	0	10	2	1	0
310075	8	0	1	1	0	1
310076	184	0	88	10	1	0
310077	10	0	1	0	1	0
310083	59	0	10	3	1	0
310086	40	0	7	0	1	0
310092	68	0	13	1	1	0
310096	34	4	3	4	1	0
312501	79	0	17	2	1	0
312502	62	7	20	4	1	0
312503	16	0	2	0	0	1
312504	41	0	20	2	1	0
312505	68	0	7	4	1	0
312506	38	3	4	1	0	1
312508	49	2	21	0	1	0

Provider	Number of Dialysis pts age 18-54	Number of dialysis patients receiving services from Voc Rehab and other Voc Rehab related Service Providers	Number of dialysis pts employed full-time or part-time	Number of dialysis pts attending school full-time or part-time	Offers Dialysis shift starting at 5pm or later	
					Yes	No
312509	26	4	16	2	0	1
312510	19	1	7	0	0	1
312511	29	4	11	2	0	1
312512	8	3	2	1	1	0
312513	55	1	15	11	1	0
312514	13	1	1	0	0	1
312515	11	0	6	1	0	1
312516	5	0	2	0	0	1
312517	11	0	7	0	0	1
312518	15	0	5	0	1	0
312519	8	0	5	0	0	1
312520	20	0	3	2	0	1
312521	17	2	1	0	0	1
312522	43	1	6	1	0	1
312523	8	0	10	1	1	0
312524	16	0	7	2	0	1
312525	86	0	42	8	1	0
312526	2	1	0	0	0	1
312527	38	1	13	2	0	1
312528	28	1	12	1	0	1
312529	24	4	5	2	1	0
312530	26	0	17	0	1	0
312531	12	0	7	0	1	0
312532	31	0	25	1	1	0
312533	37	0	9	0	1	0
312534	19	0	7	0	0	1
312535	16	0	8	0	0	1
312536	34	2	13	0	1	0
312537	44	1	17	1	0	1
312538	8	0	6	0	0	1
312539	2	0	0	0	0	1
312540	38	5	17	2	1	0
312541	8	0	4	0	1	0
312542	21	5	4	0	1	0
312543	18	0	8	1	1	0
312544	10	0	4	0	0	1
312545	33	0	8	0	0	1
312546	42	8	15	3	1	0

Provider	Number of Dialysis pts age 18-54	Number of dialysis patients receiving services from Voc Rehab and other Voc Rehab related Service Providers	Number of dialysis pts employed full-time or part-time	Number of dialysis pts attending school full-time or part-time	Offers Dialysis shift starting at 5pm or later	
					Yes	No
312547	7	0	0	0	0	1
312548	17	5	3	0	0	1
312549	12	1	2	0	0	1
312550	12	0	0	0	0	1
312551	21	0	4	0	0	1
312552	16	1	12	1	0	1
312553	14	0	2	0	0	1
312554	14	0	7	0	1	0
312555	15	1	4	0	1	0
312556	6	0	2	0	0	1
312557	13	0	1	0	0	1
312558	47	0	20	2	1	0
312559	23	2	12	2	0	1
312560	33	5	3	0	1	0
312561	8	0	3	1	0	1
312562	3	0	1	0	0	1
312563	4	0	1	0	0	1
312564	10	0	4	0	0	1
312565	1	0	0	0	0	1
313500	80	1	30	1	1	0
313501	31	0	3	1	0	1
313502	10	1	10	0	0	1
313503	34	0	1	1	1	0
313505	43	8	32	3	1	0
313507	18	4	16	0	0	1
313511	163	0	43	1	1	0
313514	23	0	10	2	1	0
31001F	12	0	1	0	0	1
<b>NJ TOTALS</b>	<b>2819</b>	<b>116</b>	<b>982</b>	<b>116</b>	<b>51</b>	<b>47</b>

400009	7	2	0	0	0	1
400013	23	1	6	0	0	1
400061	62	8	7	4	0	1
400118	12	0	2	1	0	1
402501	32	2	5	1	0	1
402502	18	0	7	0	1	0
402503	62	0	4	0	1	0
402504	52	4	9	0	1	0

Provider	Number of Dialysis pts age 18-54	Number of dialysis patients receiving services from Voc Rehab and other Voc Rehab related Service Providers	Number of dialysis pts employed full-time or part-time	Number of dialysis pts attending school full-time or part-time	Offers Dialysis shift starting at 5pm or later	
					Yes	No
402505	69	15	12	0	1	0
402506	22	3	1	0	1	0
402507	53	0	14	1	1	0
402508	57	8	20	2	1	0
402509	25	0	2	0	1	0
402510	49	3	15	2	1	0
402512	36	0	16	1	1	0
402513	38	0	6	0	1	0
402514	42	8	9	0	1	0
402515	34	9	4	1	1	0
402516	27	0	3	1	1	0
402517	49	7	9	3	1	0
402518	44	23	0	0	1	0
402519	32	1	2	1	0	1
402520	50	3	15	2	1	0
402521	25	1	13	0	0	1
402525	19	0	6	0	1	0
402526	1	0	0	0	0	1
402527	17	0	0	0	0	1
402528	29	1	0	0	1	0
402529	6	1	0	0	1	0
402530	143	11	30	3	0	1
402531	21	1	1	1	0	1
402533	22	1	6	0	0	1
403301	1	0	0	1	0	1
40003F	15	0	0	0	0	1
<b>PR TOTAL</b>	<b>1194</b>	<b>113</b>	<b>224</b>	<b>25</b>	<b>20</b>	<b>14</b>
480001	17	0	11	1	0	1
480002	25	0	2	1	1	0
<b>USVI TOTAL</b>	<b>42</b>	<b>0</b>	<b>13</b>	<b>2</b>	<b>1</b>	<b>1</b>
<b>Network Total</b>	<b>4055</b>	<b>229</b>	<b>1219</b>	<b>143</b>	<b>72</b>	<b>62</b>





## **B. Detailed Goal Activity Tables**

PROVIDER CODES LIST FOR CODED TABLES/CHARTS

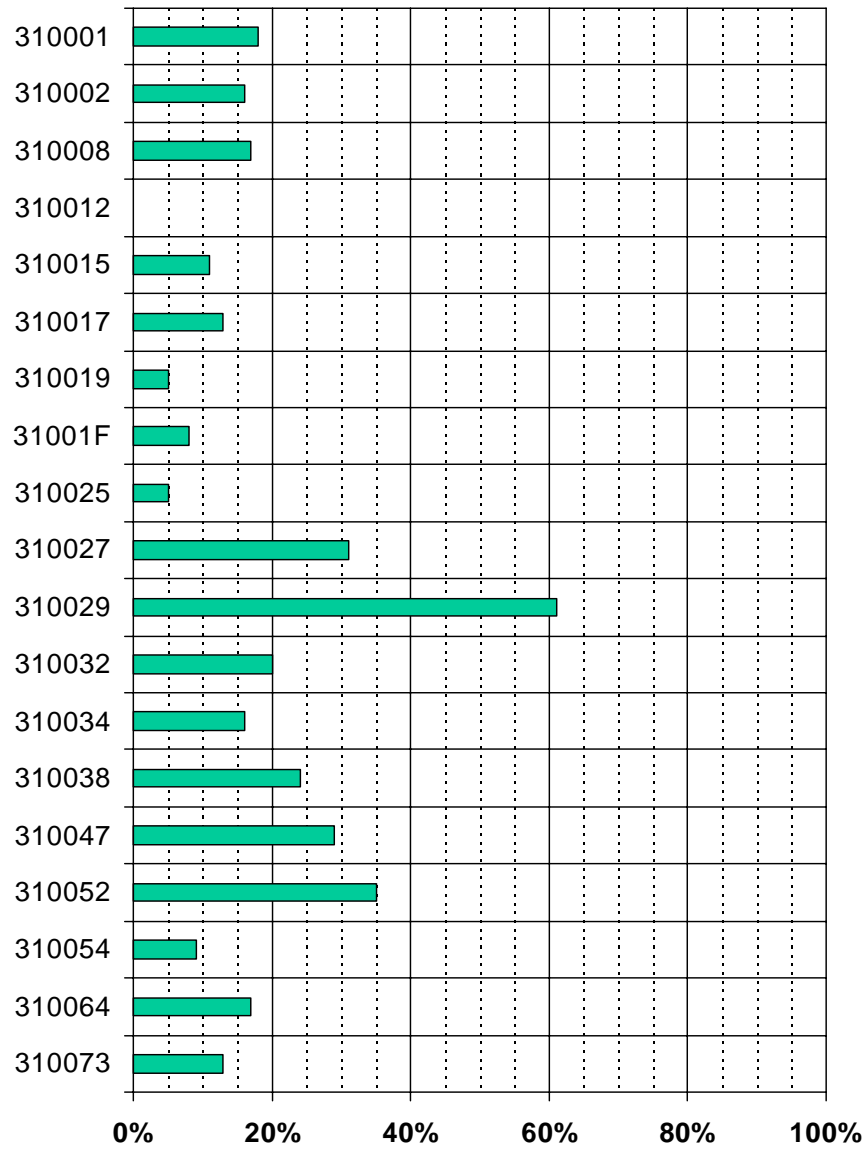
NEW JERSEY	
310001	Hackensack MC
310002	New'k Beth Is MC
310008	Holy Name Hosp
310012	Valley Hosp
310014	Cooper MC Camden
310015	Morristown Mem H
310017	Chilton Mem H
310019	St Joseph MC
31001F	VA MC Ea Orange
310025	Bayonne Hosp
310027	Trinitas Elizabeth Hosp
310029	Our Lady of L MC
310032	Bridgeton/SoJH
310034	Riverview MC/Mer
310038	RW Johnson U Hosp
310047	Shore Mem H
310052	Ocean Co Brick
310054	Mountainside H
310064	Atlantic City MC
310073	Jersey Shore MC/Mer
310074	Jersey City MC
310075	Monmouth MC
310076	St Barnabas MC
310077	Passaic Gen H
310083	Ea Orange Gen H
310086	Kennedy Wash
310092	Hel Fuld/Capital HS
310096	St Michael MC
312501	BMA Irvington
312502	BMA Jersey City
312503	BMA Pine Brook
312504	BMA Trenton
312505	BMA URS New'k
312506	BMA Hillside (Kliman)
312508	Gambro Burl Co
312509	RCG Ren Inst Toms R
312510	Gambro Holmdel
312511	DaVita Howell
312512	DaVita Cape May Ct
312513	Gambro Cherry Hill
312514	NNA Renex Salem
312515	BMA So Plainfield
312516	BMA Princeton
312517	Gambro Freeh AKC
312518	BMA Colonia
312519	FMC Morris Home DC
312520	Gambro Nept AKC
312521	Gambro Delran
312522	Gambro Ea Or AKC

312523	Pascack V/Booth DC
312524	FMCHoly Name Home
312525	DCI North Brunswick
312526	DaVita Linden DC[EndedSvc]
312527	Belmont Ct Ewing
312528	Gambro Summit
312529	BMA Hoboken
312530	DaVita Bridgewater
312531	FMC No Jers Linc Pk
312532	St Barnabas Union
312533	NNA Renex Orange
312534	NNA Renex Woodby
312535	DaVita Atlantic City
312536	FMC Englewood DC
312537	DaVita Atlantic AKC
312538	RCG So Ocean Co
312539	DCA Manahawkin
312540	Gambro Perth Amb
312541	Gambro Old Bridge
312542	Union City RC
312543	FMC Dial Assoc No NJ
312544	DCI Freehold
312545	JCAKC No Bergen
312546	NNA Renex Bloomfld
312547	BMA Phillipsburg
312548	Gambro Burl North
312549	BMA Elmwood Pk
312550	BMA Kings Ct, Flem
312551	DCA Vineland
312552	Belmont Ct Hamilton
312553	RV Passaic
312554	FMC St. Clare's DC
312555	DCI St. Peter's
312556	DCI Princeton
312557	RCG Lakewood
312558	Gambro Plainfield
312559	Gambro Edison
312560	Silver Care DC
312561	RV Bayonne
312562	DaVita Bricktown
312563	RV Brick
312564	NNA Renex Harrison
312565	RV OLL Sewell
313500	Parkside DC
313501	Kennedy Strat
313502	Kessler DC
313503	Trinitas Linden
313505	Mt Laurel DC
313507	Willowbrook DC
313511	St Joseph Satellite

313512	Trinitas Elizabeth
313514	Valley Fairlawn
313519	Trinitas Lvngstn St
PUERTO RICO	
400007	Ryder H
400009	Santa Rosa H
400013	Cayey DC
400016	Auxilio Mutuo H- TXPNTS ONLY
400021	Concepcion H
400022	Damas H
40003F	VA MC (SJ)
400044	Ponce H
400061	Univ H (SJ)
400118	Doctor's Cntr H
402501	BMA San Juan
402502	BMA Ponce
402503	BMA Mayaguez
402504	BMA Bayamon
402505	BMA Caguas
402506	BMA San German
402507	BMA Carolina
402508	BMA Arecibo
402509	BMA Guayama
402510	Atlantis Ponce CNDS
402512	BMA Las Americas
402513	BMA Aguadilla
402514	BMA Humacao
402515	BMA Rio Piedras
402516	Aibonito DC
402517	BMA West Ponce
402518	FMC Vega Baja DC
402519	Atlantis Aguadilla
402520	Bayamon RC
402521	Fajardo DC
402522	TRC Auxilio DC [sold]
402523	TRC Dr. Pila DC [sold]
402524	TRC Yauco [sold]
402525	BMA Mayaguez No
402526	Aguada DC
402527	Atlantis Mayaguez MC
402528	FMC Dr. Pila DC
402529	FMC Arecibo No
402530	FMC Auxilio Mutuo
402531	FMC Yauco DC
402533	Atlantis Manati DC
403301	Univ Ped H
U.S. VIRGIN ISLANDS	
480001	St.Th H (Schneider)
480002	St.Croix H (J Luis)

### Goal Activity: Transplant Waiting List Percent of Dialysis Caseload in a Transplant Pool

Facilities\*

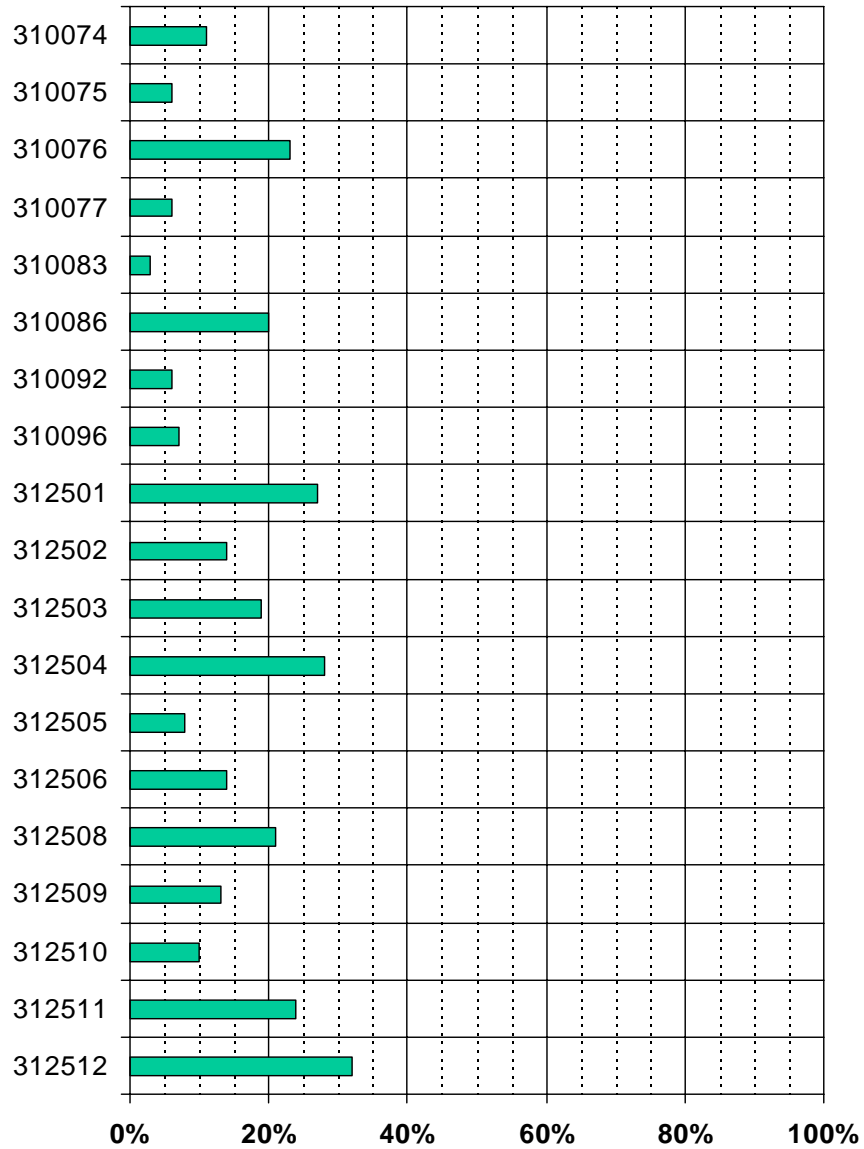


\*Facilities with no caseload omitted.

Percent On List

### Goal Activity: Transplant Waiting List Percent of Dialysis Caseload in a Transplant Pool

Facilities\*

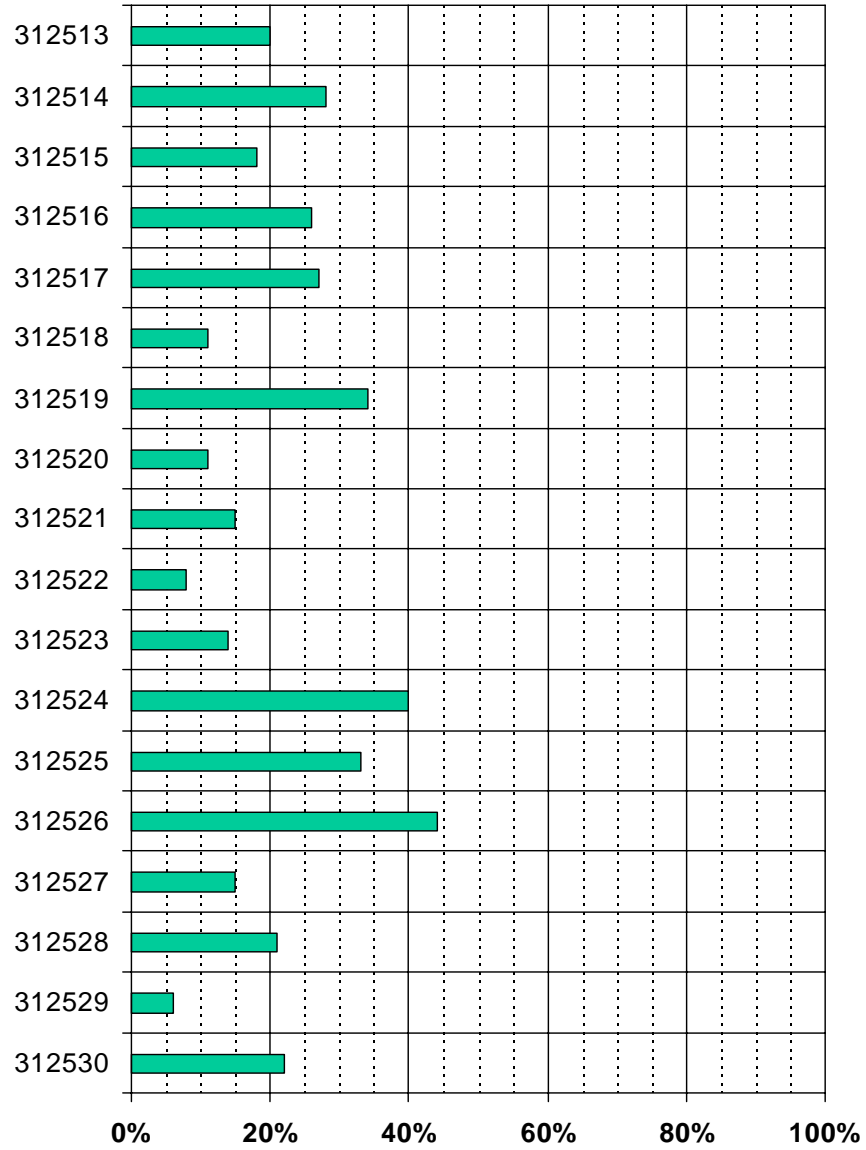


\*Facilities with no caseload omitted.

Percent On List

### Goal Activity: Transplant Waiting List Percent of Dialysis Caseload in a Transplant Pool

Facilities\*

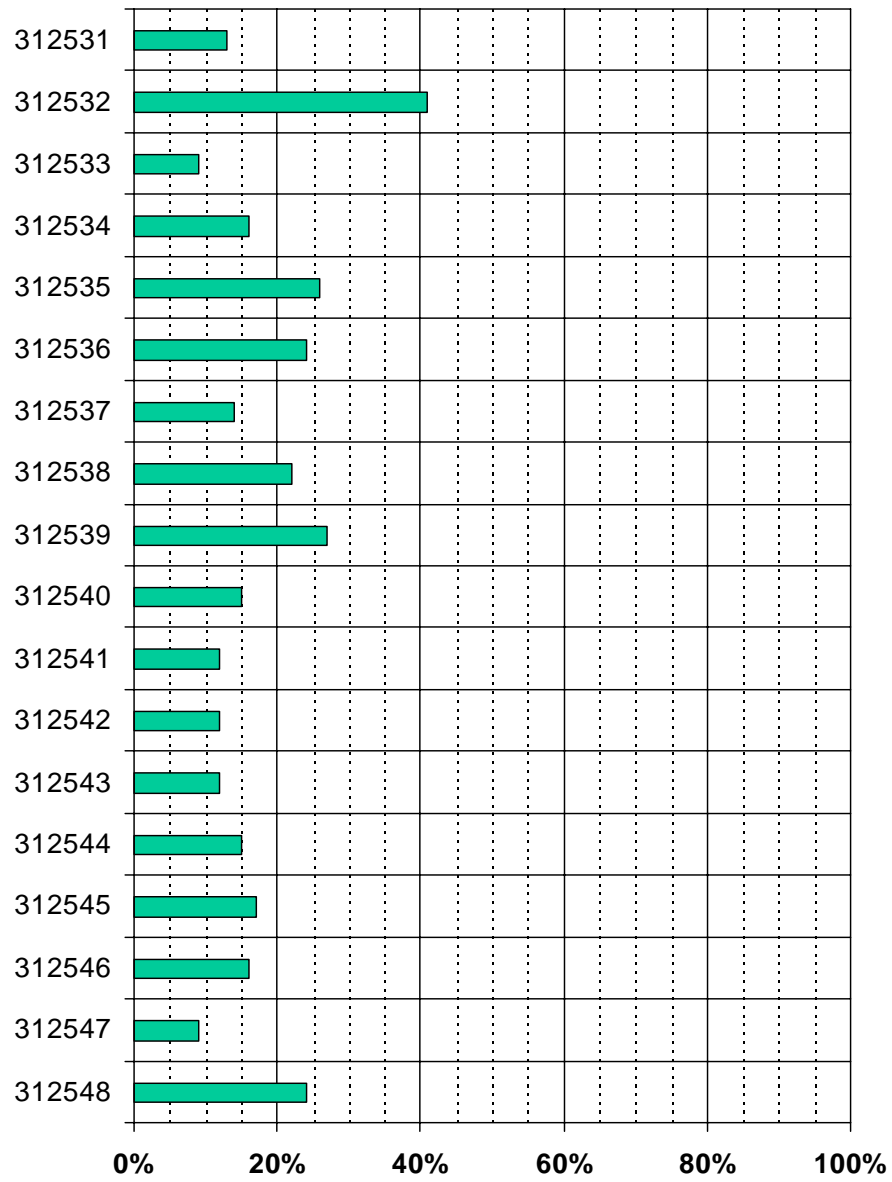


\*Facilities with no caseload omitted.

Percent On List

### Goal Activity: Transplant Waiting List Percent of Dialysis Caseload in a Transplant Pool

Facilities\*

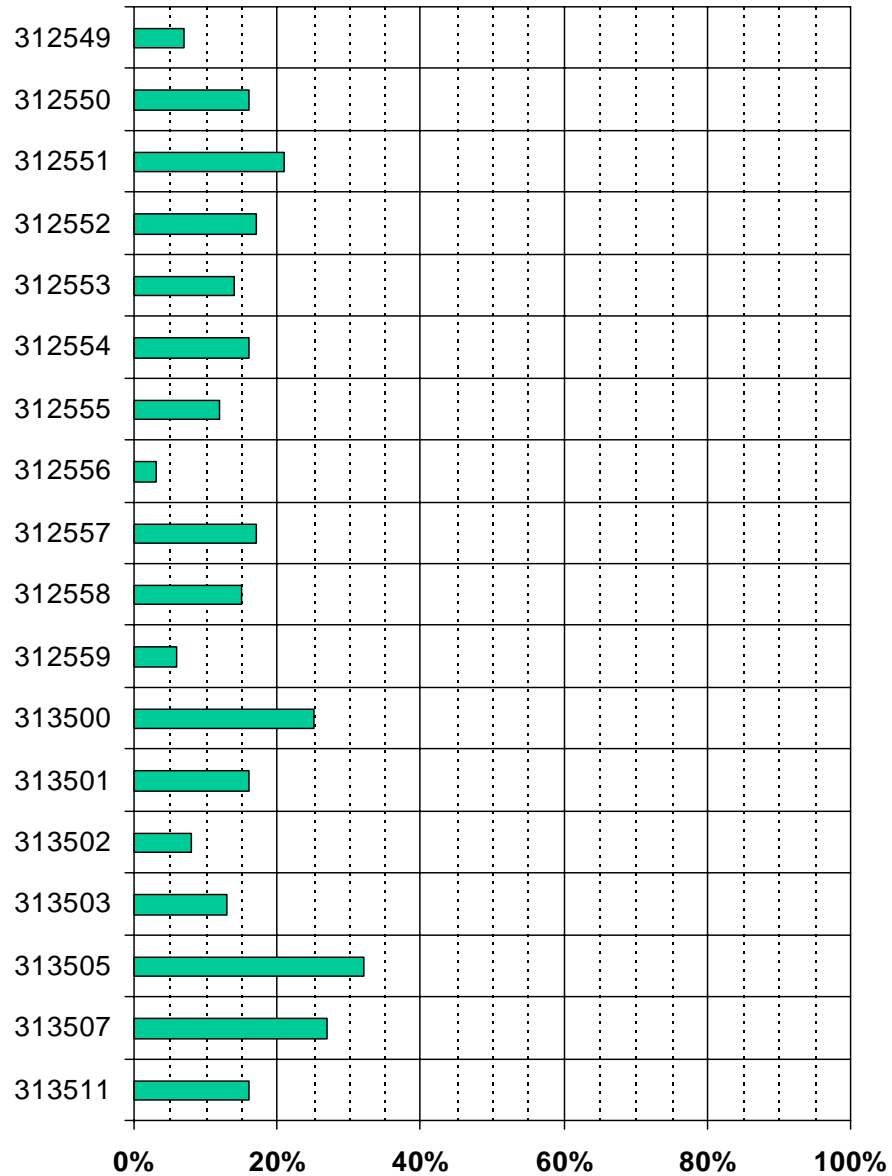


\*Facilities with no caseload omitted.

Percent On List

### Goal Activity: Transplant Waiting List Percent of Dialysis Caseload in a Transplant Pool

Facilities\*

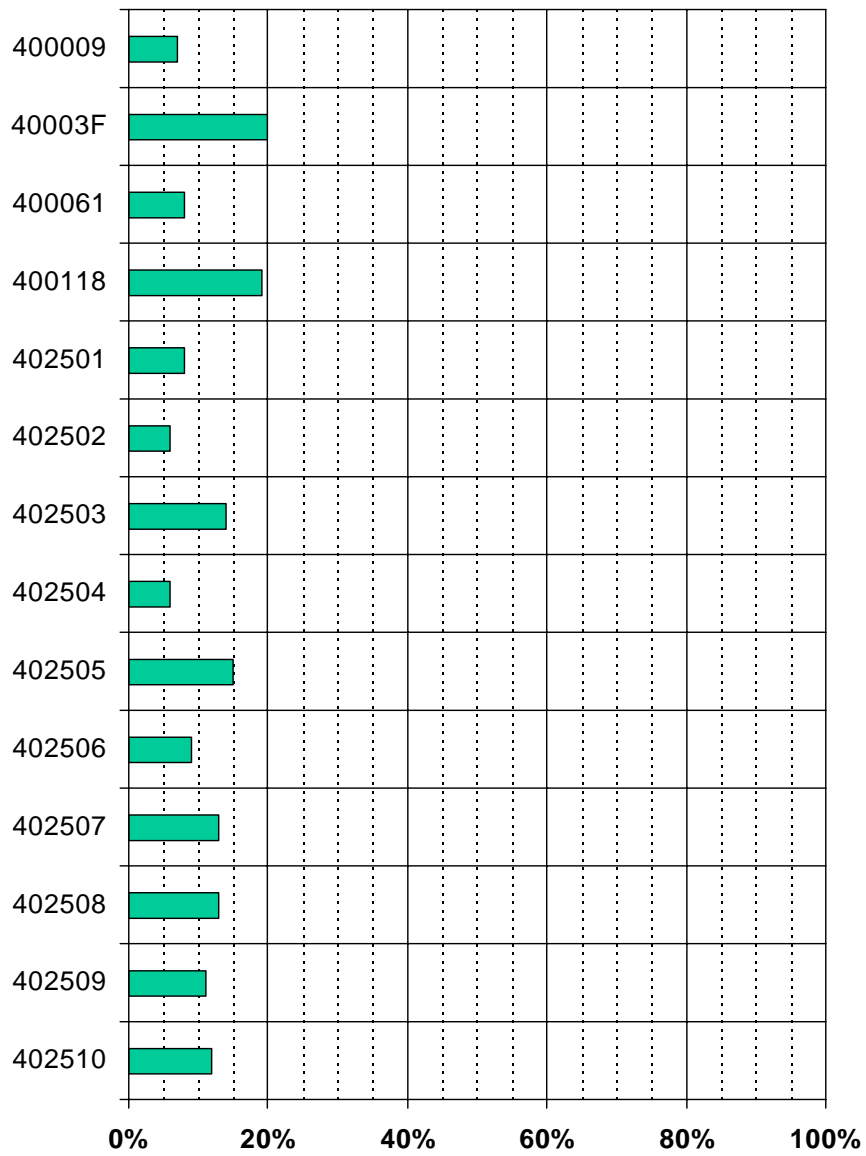


\*Facilities with no caseload omitted.

Percent On List

### Goal Activity: Transplant Waiting List Percent of Dialysis Caseload in a Transplant Pool

Facilities\*



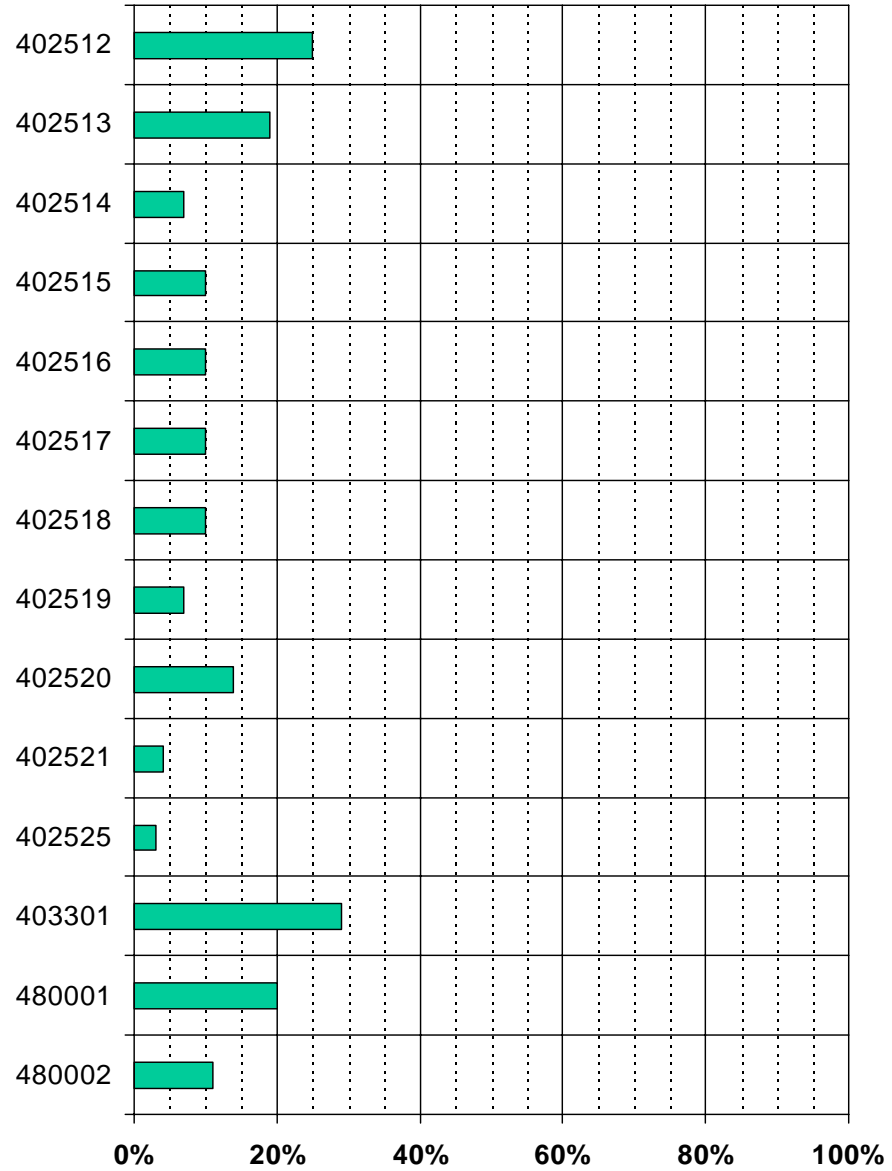
\*Facilities with no caseload omitted.

Percent On List



### Goal Activity: Transplant Waiting List Percent of Dialysis Caseload in a Transplant Pool

Facilities\*

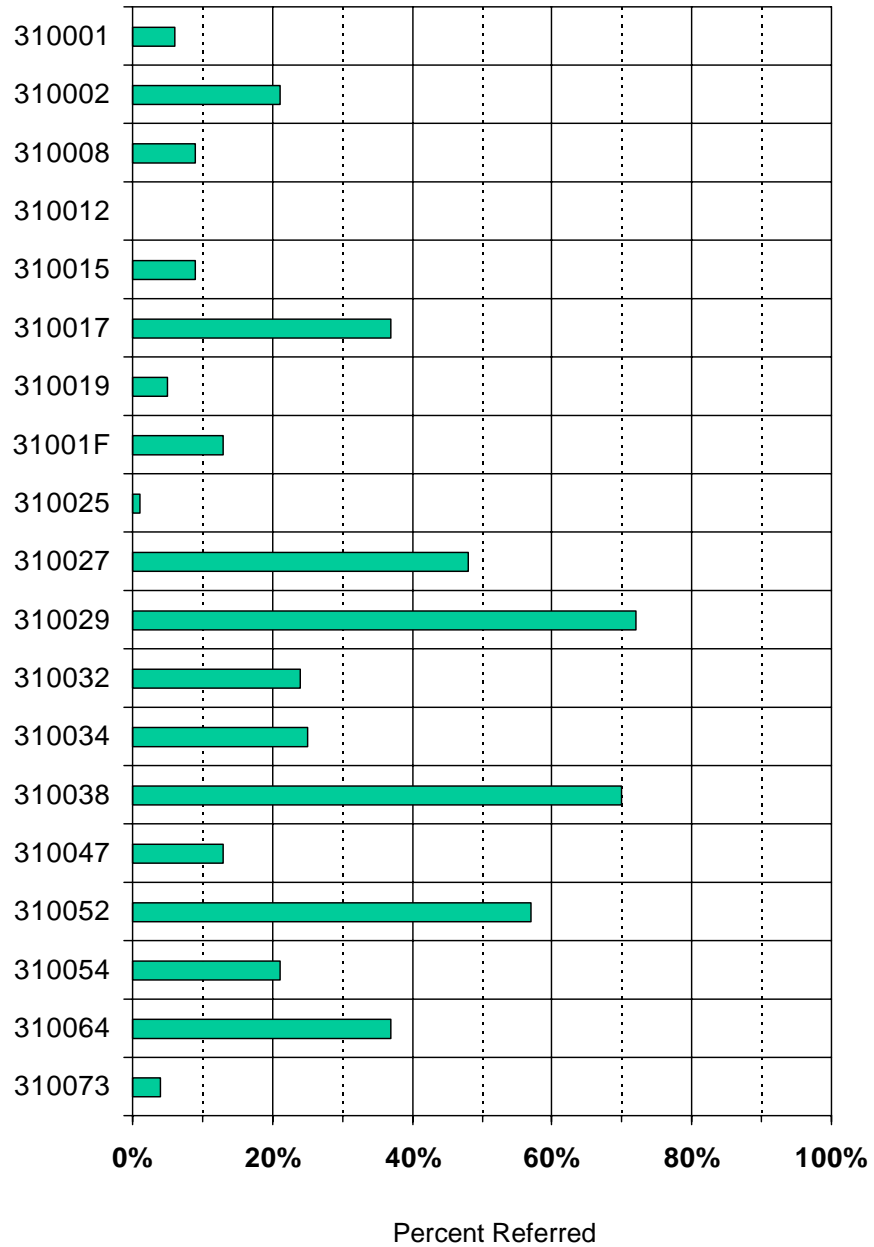


\*Facilities with no caseload omitted.

Percent On List

### Goal Activity: Transplant Referrals Percent of Total Caseload Referred for Evaluation

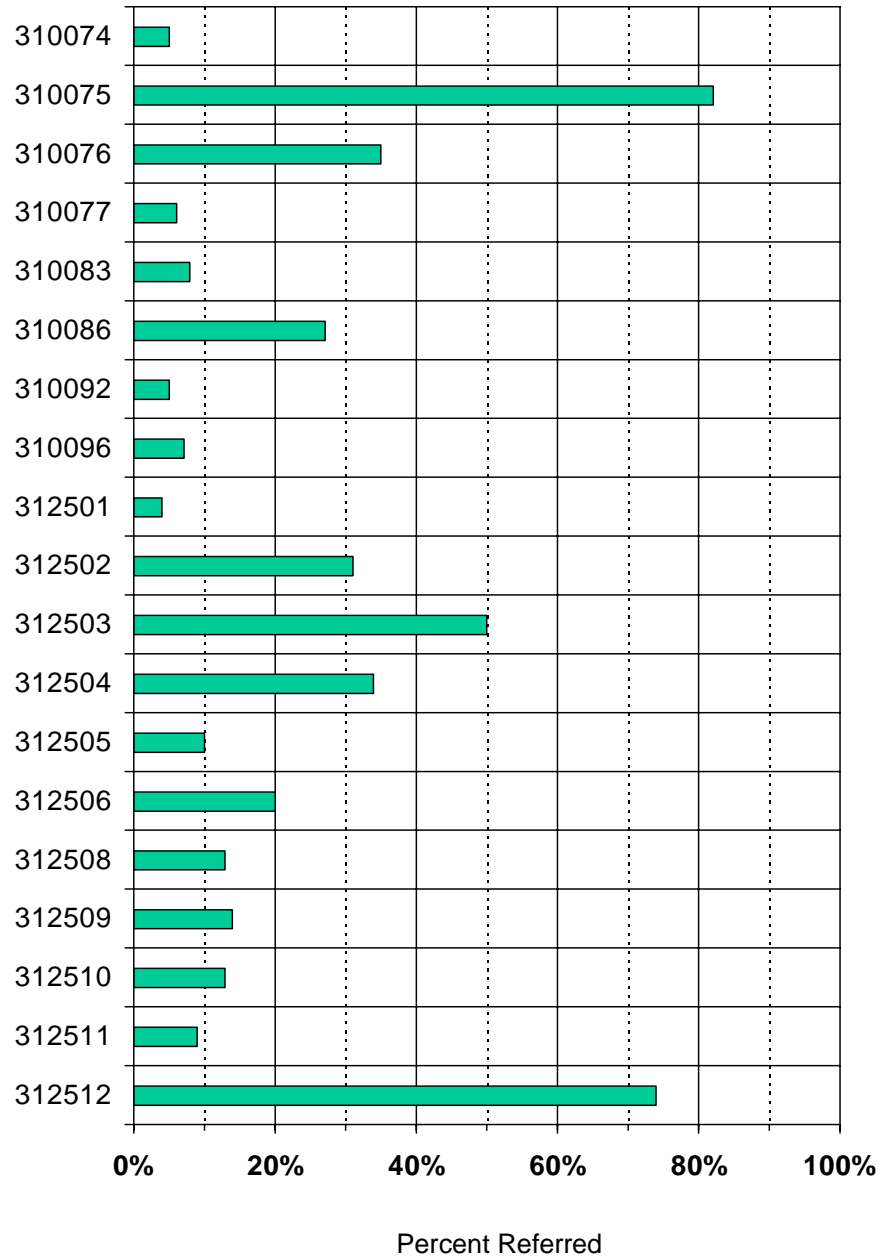
Facilities\*



\*Facilities with no ongoing caseload omitted.

### Goal Activity: Transplant Referrals Percent of Total Caseload Referred for Evaluation

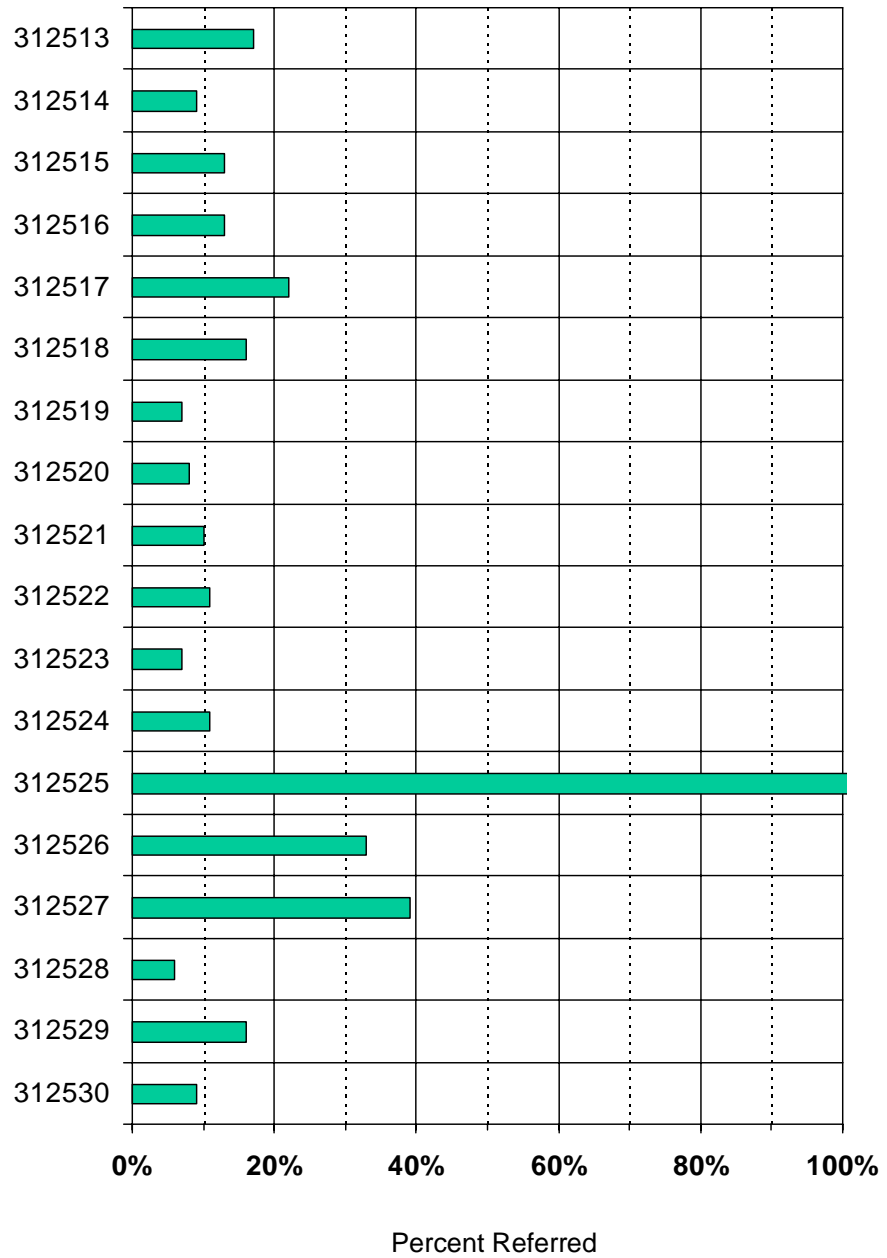
Facilities\*



\*Facilities with no ongoing caseload omitted.

### Goal Activity: Transplant Referrals Percent of Total Caseload Referred for Evaluation

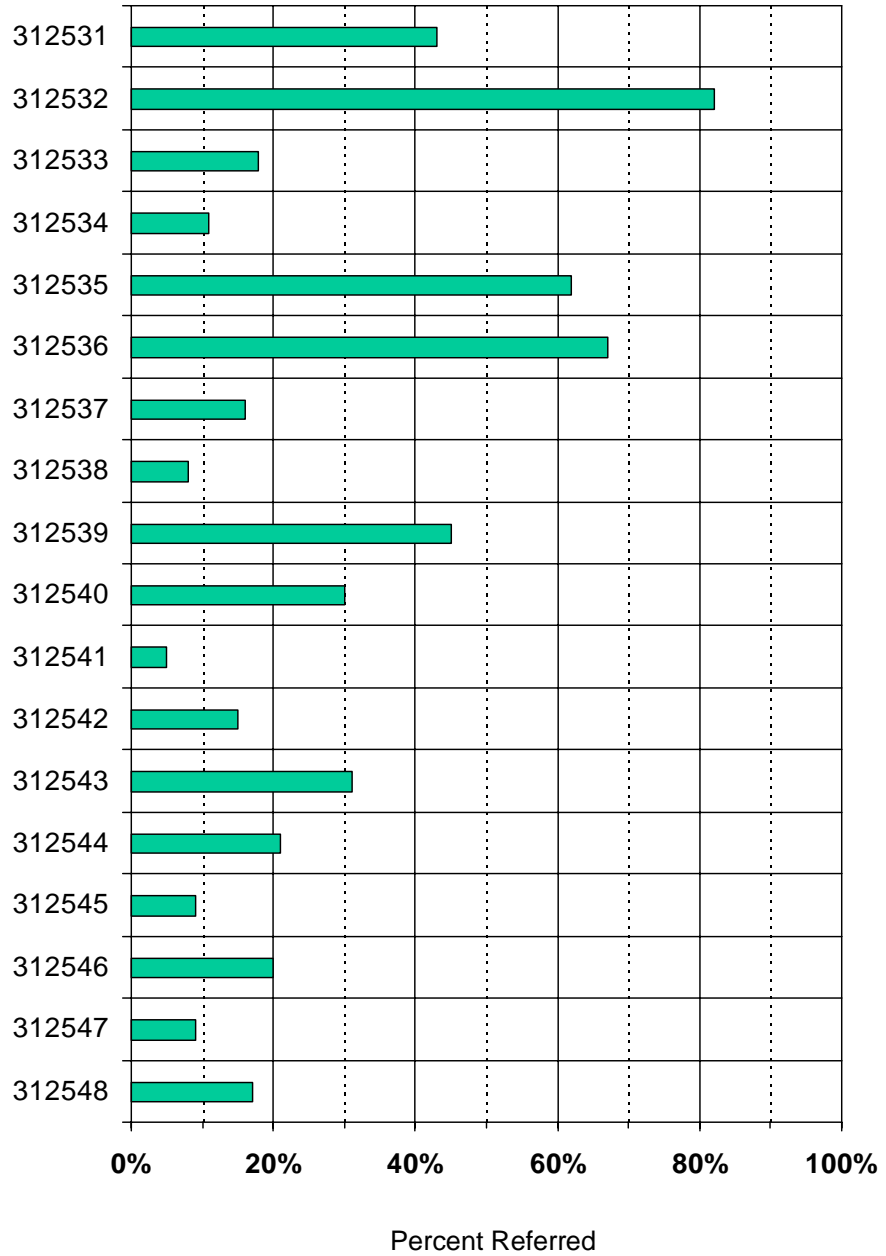
Facilities\*



\*Facilities with no ongoing caseload omitted.

### Goal Activity: Transplant Referrals Percent of Total Caseload Referred for Evaluation

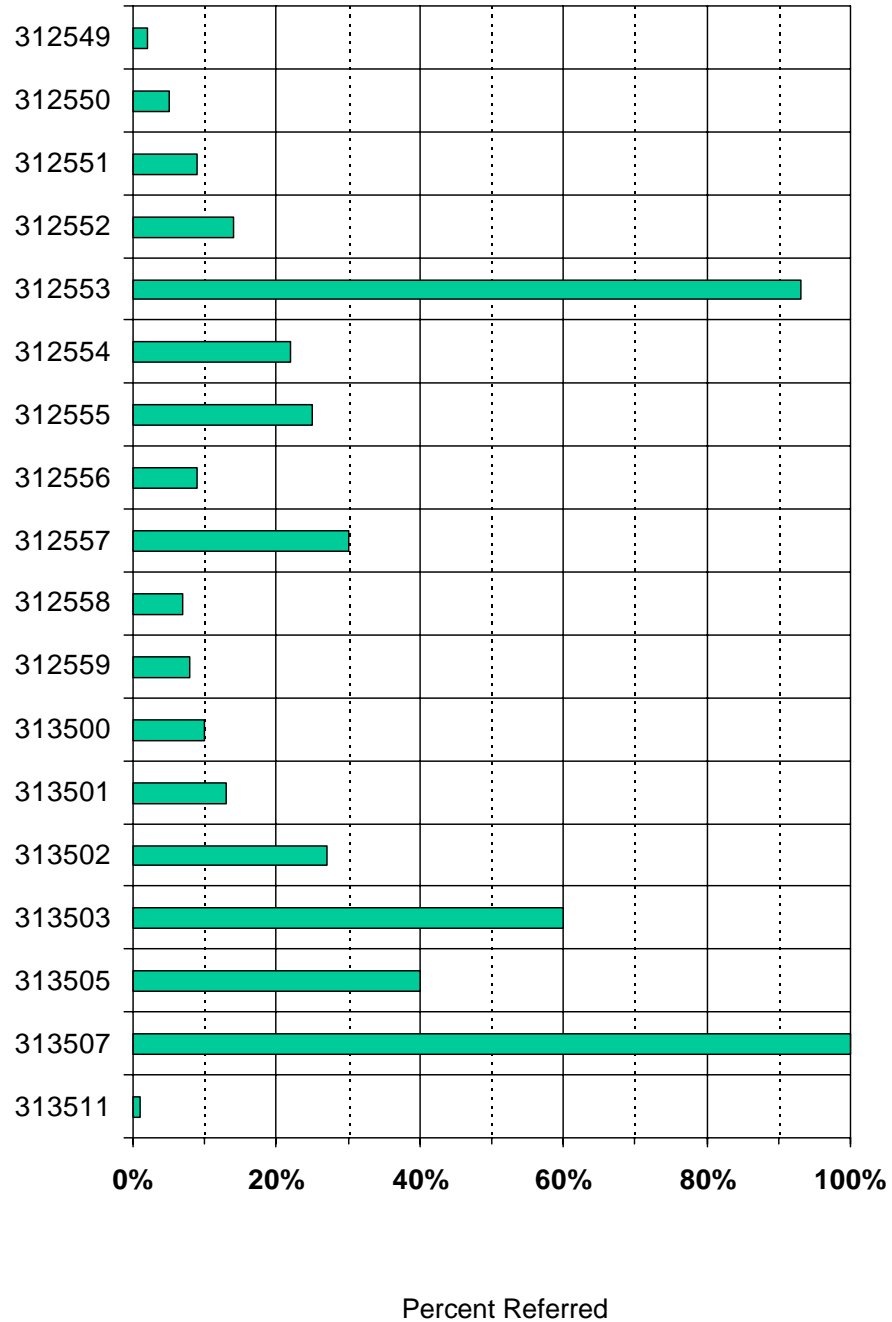
Facilities\*



\*Facilities with no ongoing caseload omitted.

### Goal Activity: Transplant Referrals Percent of Total Caseload Referred for Evaluation

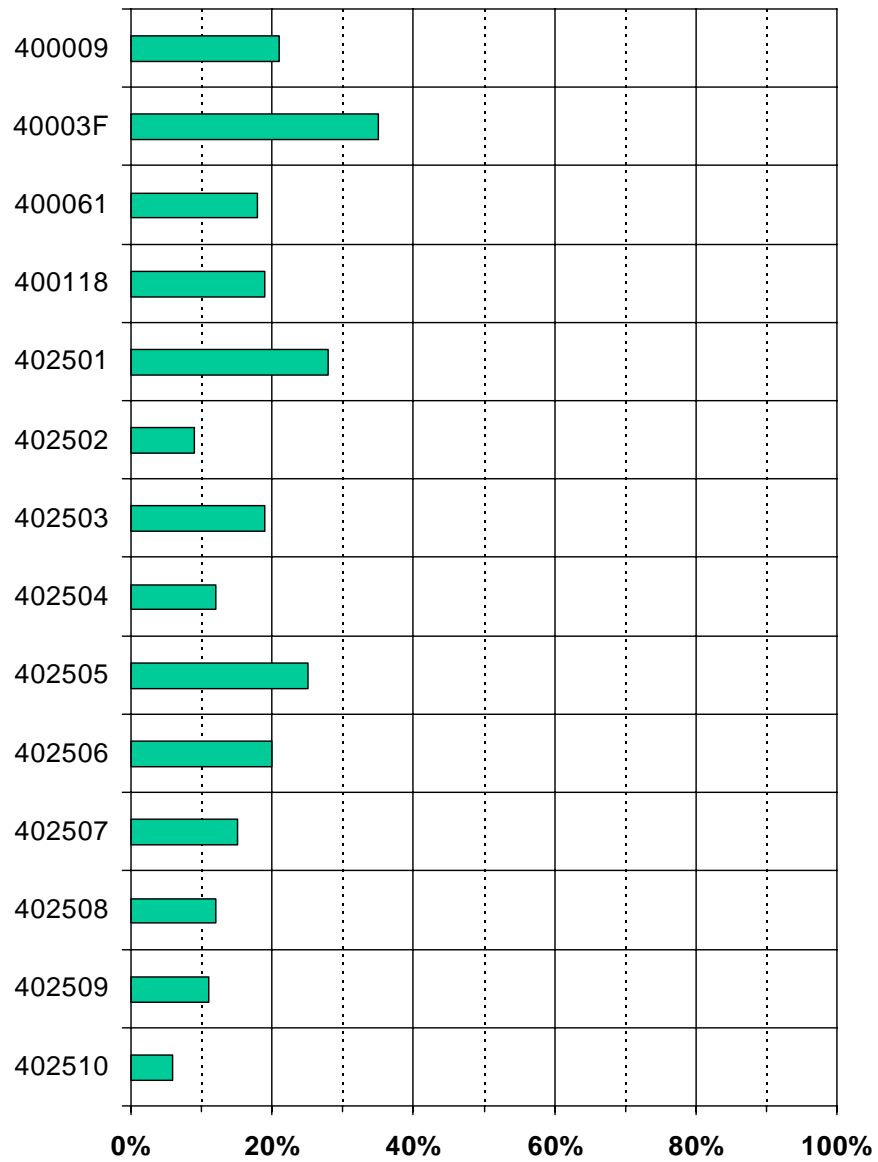
Facilities\*



\*Facilities with no ongoing caseload omitted.

### Goal Activity: Transplant Referrals Percent of Total Caseload Referred for Evaluation

Facilities\*

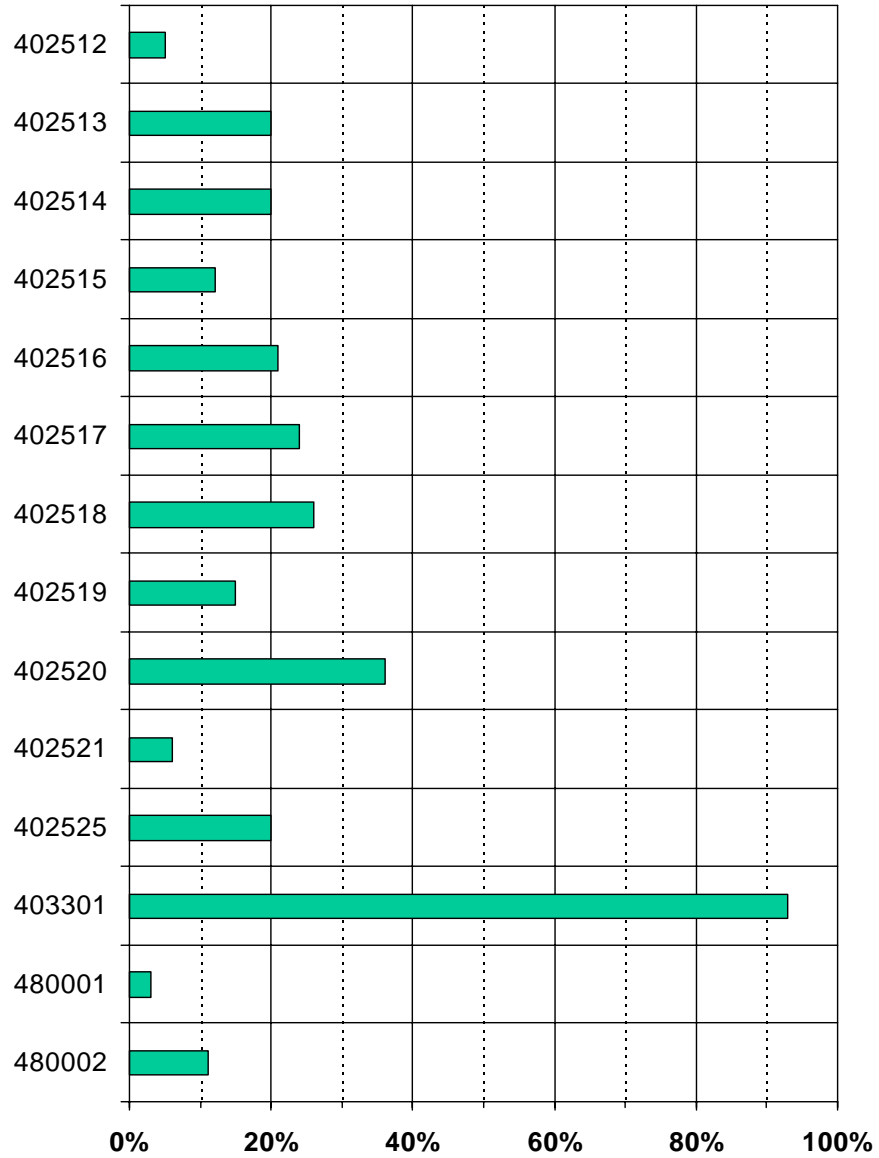


Percent Referred

\*Facilities with no ongoing caseload omitted.

### Goal Activity: Transplant Referrals Percent of Total Caseload Referred for Evaluation

Facilities\*



Percent Referred

\*Facilities with no ongoing caseload omitted.



<b>2002 Transplant Activity Profile</b>		
<b>Provider</b>	<b>Dialysis Caseload</b>	<b>Number of Patients Transplanted</b>
310001	250	11
310002	156	0
310008	230	14
310012	4	2
310014#	0	0
310015	140	4
310017	30	1
310019	19	0
31001F	48	0
310025	73	0
310027	147	1
310029	165	10
310032	133	4
310034	32	1
310038	46	7
310047	154	8
310052	89	8
310054	141	4
310063^	0	
310064	75	6
310073	98	3
310074	74	3
310075	17	1
310076	239	22
310077	36	1
310083	162	1
310086	153	6
310092	174	2
310096	74	1
312332	0	2
312334^	0	
312501	202	4
312502	172	1
312503	36	1
312504	113	5
312505	120	1
312506	100	1
312508	152	13
312509	198	15

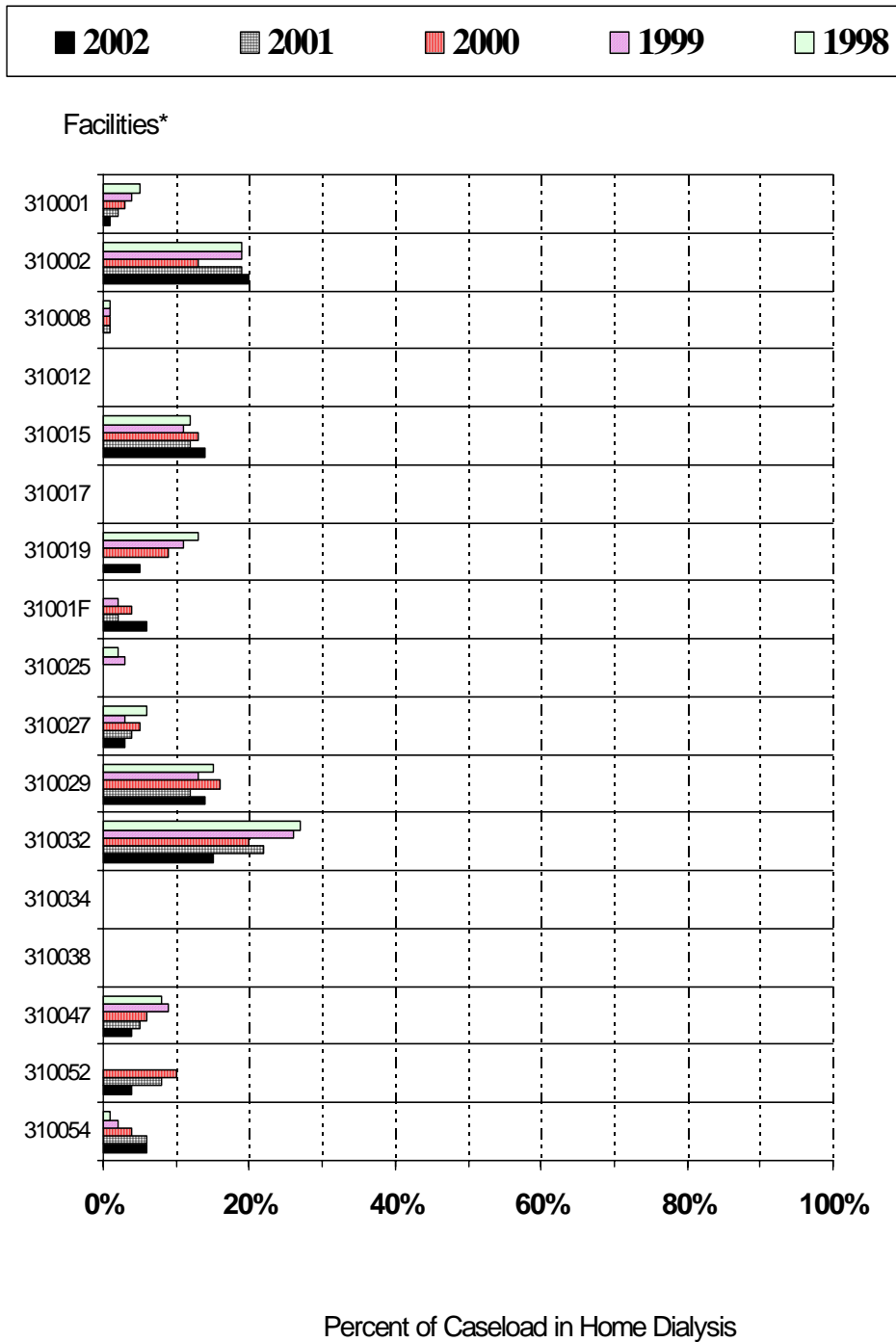
<b>2002 Transplant Activity Profile</b>		
<b>Provider</b>	<b>Dialysis Caseload</b>	<b>Number of Patients Transplanted</b>
312510	67	4
312511	66	2
312512	34	2
312513	137	10
312514	53	2
312515	55	0
312516	23	2
312517	59	3
312518	80	4
312519	29	1
312520	75	3
312521	73	1
312522	96	3
312523	76	3
312524	35	2
312525	264	22
312526	9	1
312527	96	1
312528	117	6
312529	77	2
312530	95	5
312531	61	2
312532	95	5
312533	137	4
312534	74	2
312535	42	0
312536	127	5
312537	153	11
312538	64	0
312539	22	2
312540	125	8
312541	58	1
312542	107	4
312543	77	5
312544	52	6
312545	92	3
312546	128	4
312547	23	0
312548	71	7
312549	46	0

<b>2002 Transplant Activity Profile</b>		
<b>Provider</b>	<b>Dialysis Caseload</b>	<b>Number of Patients Transplanted</b>
312550	43	2
312551	87	1
312552	76	0
312553	69	3
312554	86	3
312555	67	0
312556	35	1
312557	63	2
312558	145	4
312559	66	1
312560#	173	6
312561#	38	2
312562#	13	0
312563#	38	0
312564#	42	0
312565#	14	0
313500	123	5
313501	83	4
313502	60	1
313503	84	6
313505	119	5
313507	95	4
313511	366	12
313512#	0	0
313514#	131	5
<b>NJ Totals</b>	<b>9338</b>	<b>256</b>
400007	1	0
400009	14	0
400013#	55	1
400021	0	0
400022	0	0
40003F	49	0
400044	1	0
400061	97	2
400118	16	2
402501	60	0
402502	64	1
402503	164	2
402504	166	5
402505	200	8

<b>2002 Transplant Activity Profile</b>		
<b>Provider</b>	<b>Dialysis Caseload</b>	<b>Number of Patients Transplanted</b>
402506	64	0
402507	171	5
402508	193	3
402509	56	0
402510	145	3
402512	76	6
402513	108	2
402514	135	6
402515	101	4
402516	72	3
402517	148	6
402518	135	4
402519	114	4
402520	125	2
402521	78	0
402522	0	0
402523	0	0
402524	0	0
402525	69	1
402526#	4	0
402527#	45	0
402528#	87	0
402529#	31	0
402530#	368	10
402531#	71	0
402533#	69	0
403301	14	7
<b>PR Totals</b>	<b>3366</b>	<b>87</b>
480001	61	1
480002	75	2
<b>USVI Totals</b>	<b>136</b>	<b>3</b>
<b>Network TOTALS</b>	<b>12840</b>	<b>346</b>

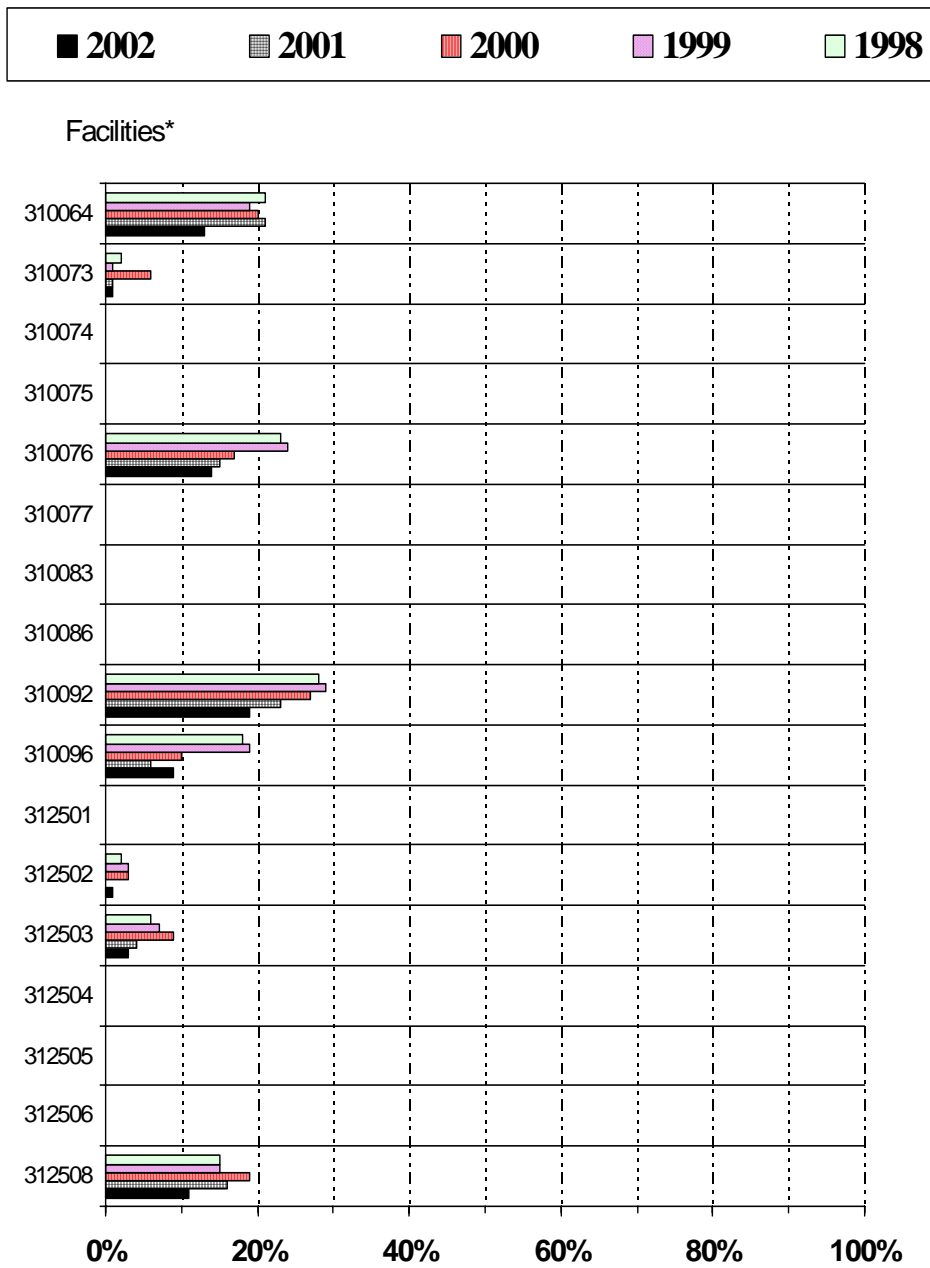
Sources: 2002 ESRD Facility Survey (Form 2744) and Addendum

### Goal Achievement in Home Dialysis



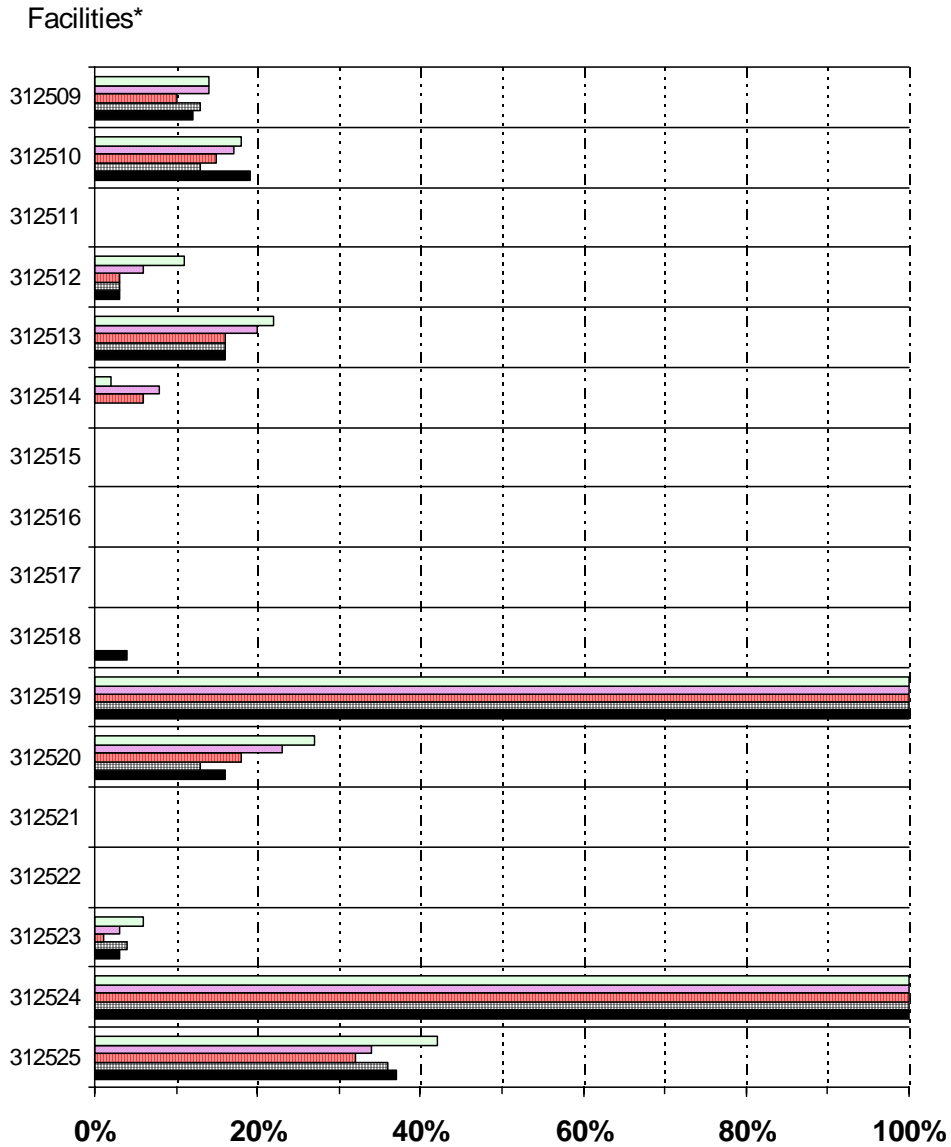
\*Facilities with no caseload omitted.

### Goal Achievement in Home Dialysis



\*Facilities with no caseload omitted.

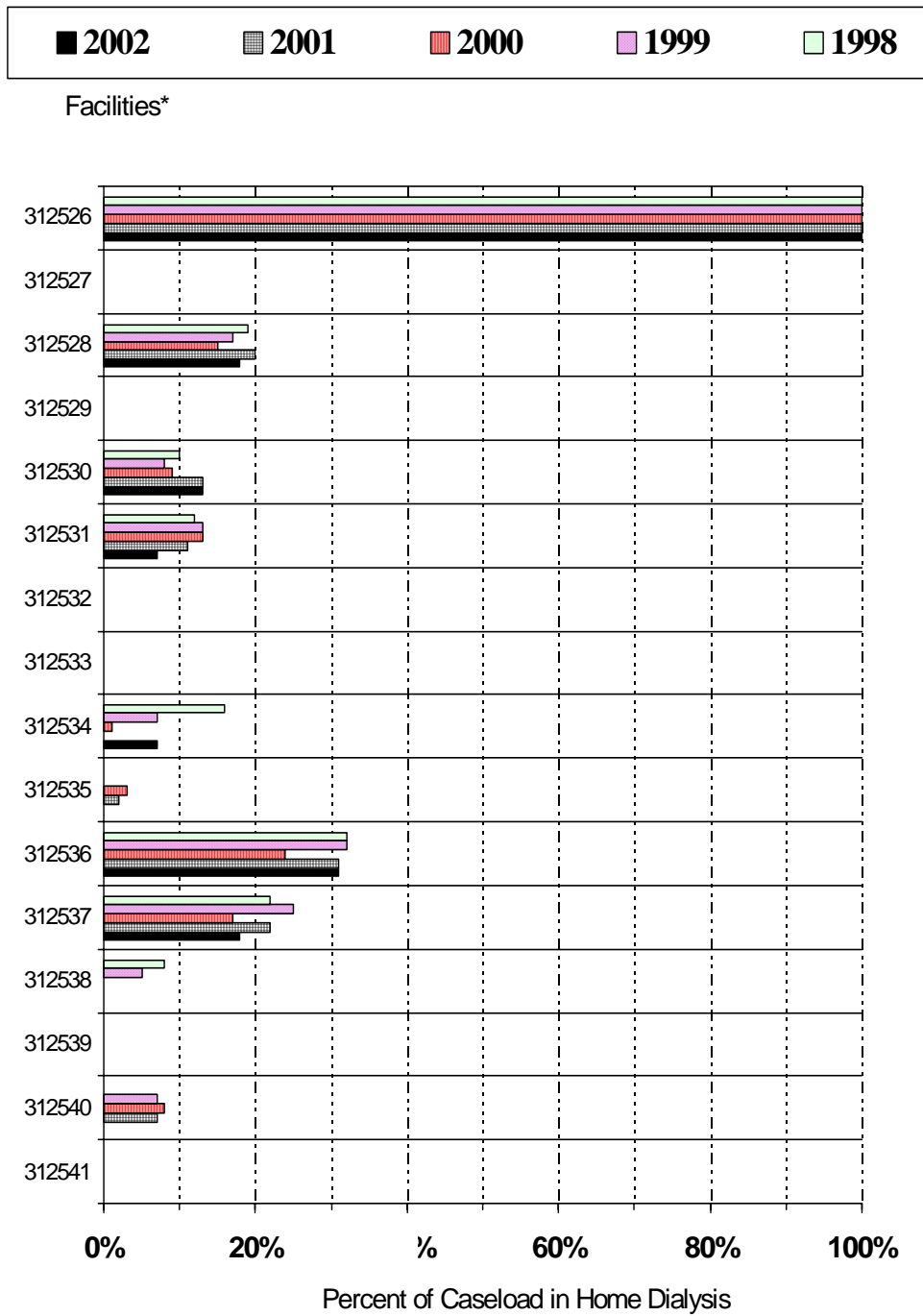
### Goal Achievement in Home Dialysis



Percent of Caseload in Home Dialysis

\*Facilities with no caseload omitted.

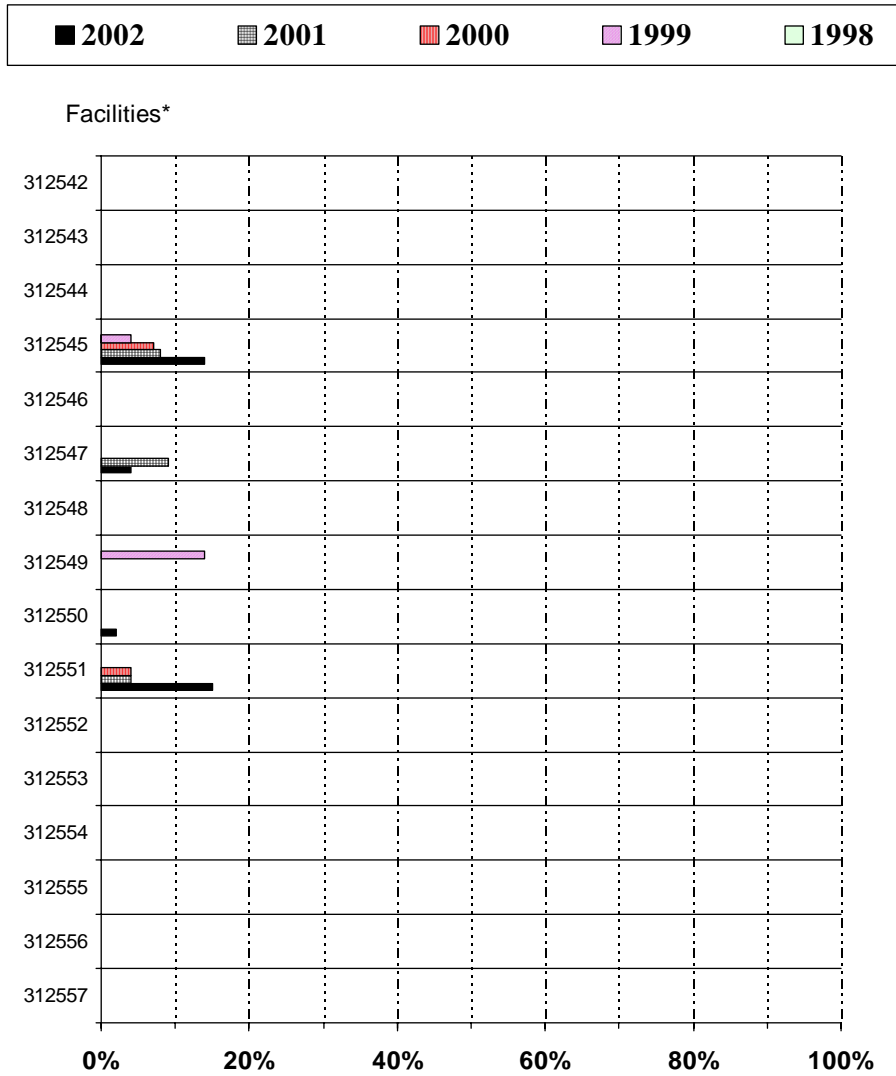
### Goal Achievement in Home Dialysis



\*Facilities with no caseload omitted.



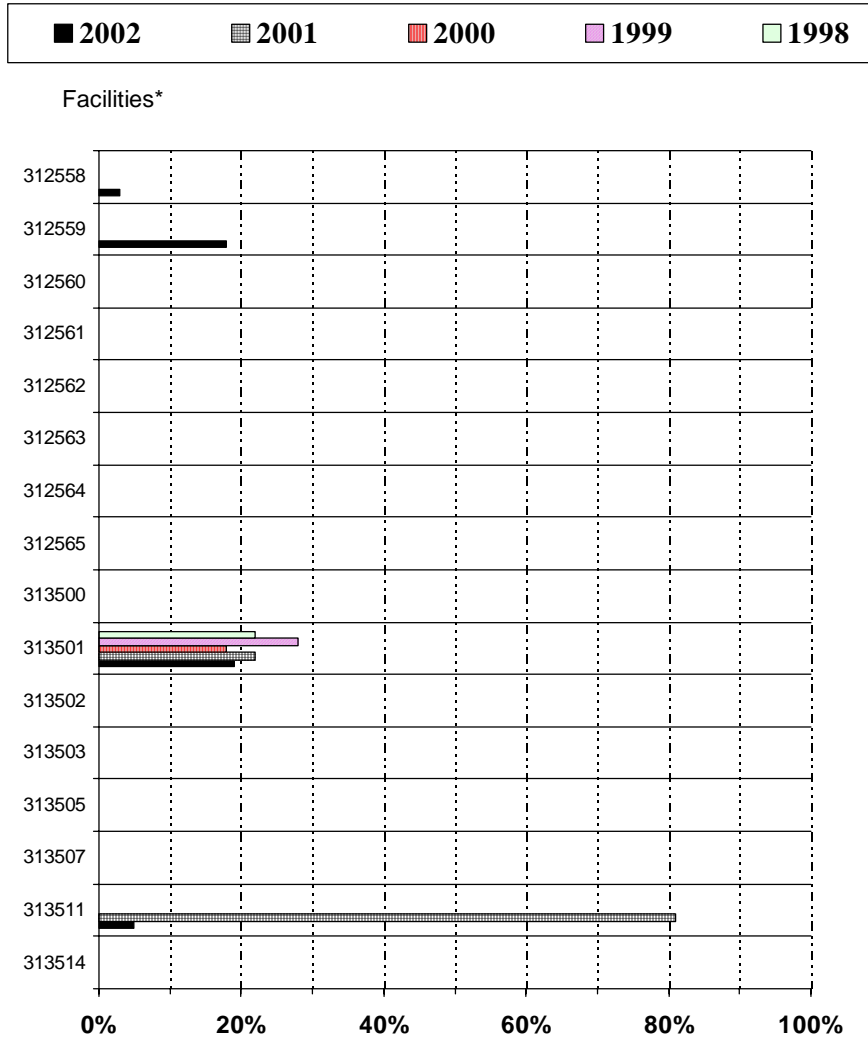
### Goal Achievement in Home Dialysis



Percent of Caseload in Home Dialysis

\*Facilities with no caseload omitted.

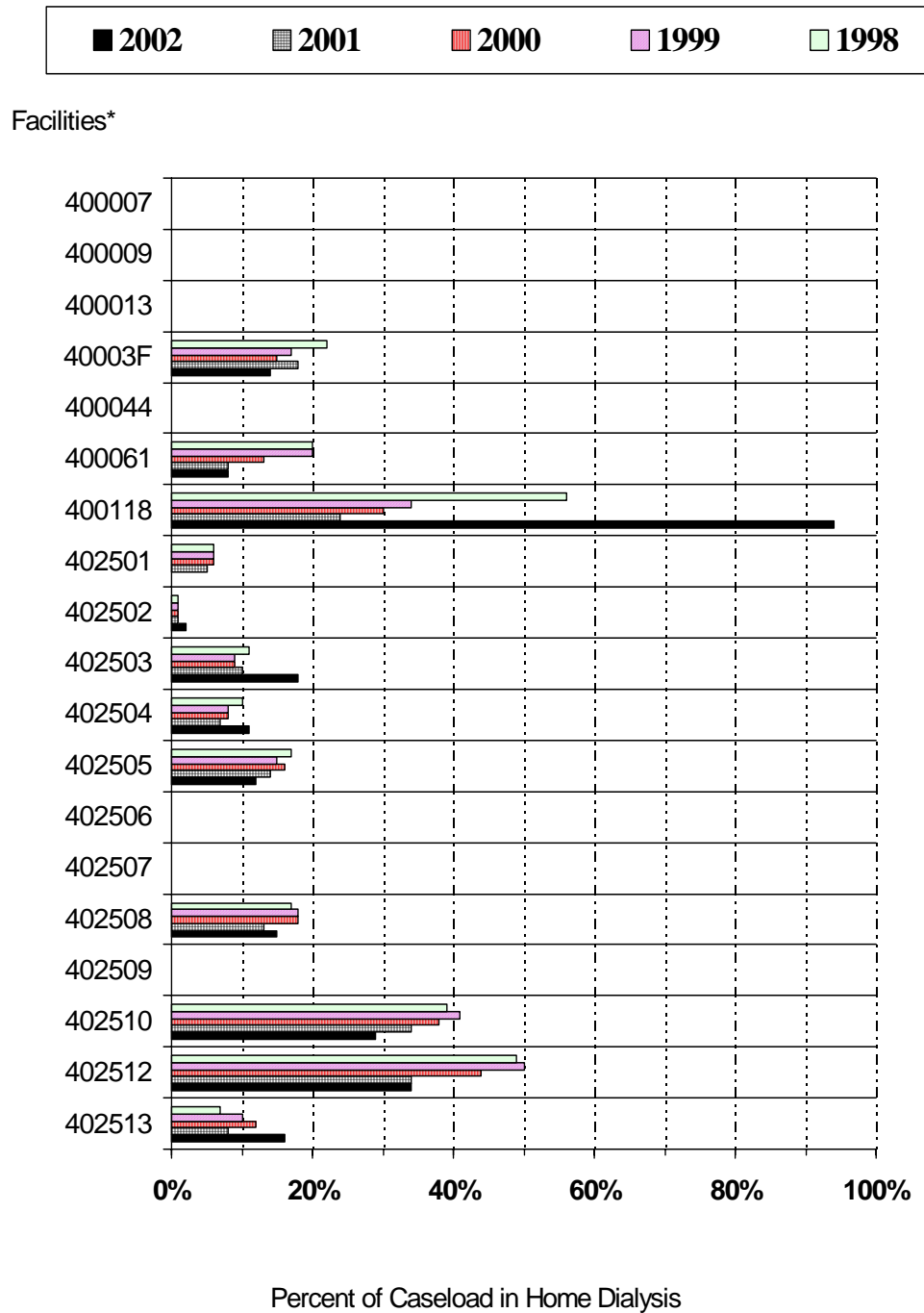
Goal Achievement in Home Dialysis



Percent of Caseload in Home Dialysis

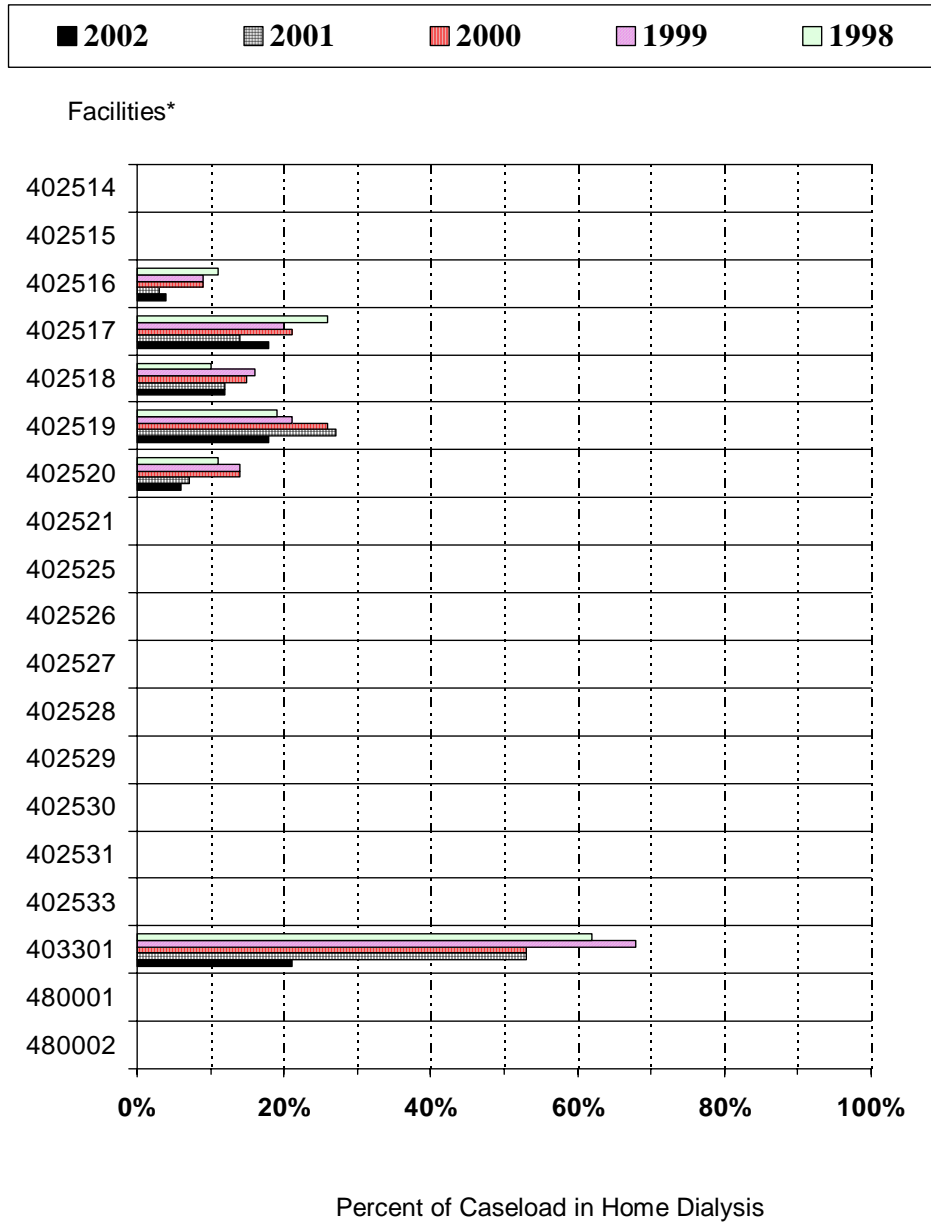
\*Facilities with no caseload omitted.

### Goal Achievement in Home Dialysis



\*Facilities with no caseload omitted.

### Goal Achievement in Home Dialysis



\*Facilities with no caseload omitted.

<b>2002 Home Dialysis Goal Activity Profile</b>		
<b>Provider Number</b>	<b>Dialysis Caseload</b>	<b>Patients on Home Dialysis*</b>
310001	250	3
310002	156	31
310008	230	1
310012	4	0
310014#	0	0
310015	140	20
310017	30	0
310019	19	1
31001F	48	3
310025	73	0
310027	147	5
310029	165	23
310032	133	20
310034	32	0
310038	46	0
310047	154	6
310052	89	4
310054	141	8
310063^	0	000
310064	75	10
310073	98	1
310074	74	0
310075	17	0
310076	239	34
310077	36	0
310083	162	0
310086	153	0
310092	174	33
310096	74	7
312332	0	0
312334^	0	000
312501	202	0
312502	172	1
312503	36	1
312504	113	0
312505	120	0
312506	100	0
312508	152	16
312509	198	24
312510	67	13
312511	66	0
312512	34	1
312513	137	22

<b>2002 Home Dialysis Goal Activity Profile</b>		
<b>Provider Number</b>	<b>Dialysis Caseload</b>	<b>Patients on Home Dialysis*</b>
312514	53	0
312515	55	0
312516	23	0
312517	59	0
312518	80	3
312519	29	29
312520	75	12
312521	73	0
312522	96	0
312523	76	2
312524	35	35
312525	264	97
312526	9	9
312527	96	0
312528	117	21
312529	77	0
312530	95	12
312531	61	4
312532	95	0
312533	137	0
312534	74	5
312535	42	0
312536	127	39
312537	153	28
312538	64	0
312539	22	0
312540	125	0
312541	58	0
312542	107	0
312543	77	0
312544	52	0
312545	92	13
312546	128	0
312547	23	1
312548	71	0
312549	46	0
312550	43	1
312551	87	13
312552	76	0
312553	69	0
312554	86	0
312555	67	0
312556	35	0

<b>2002 Home Dialysis Goal Activity Profile</b>		
<b>Provider Number</b>	<b>Dialysis Caseload</b>	<b>Patients on Home Dialysis*</b>
312557	63	0
312558	145	5
312559	66	12
312560#	173	0
312561#	38	0
312562#	13	0
312563#	38	0
312564#	42	0
312565#	14	0
313500	123	0
313501	83	16
313502	60	0
313503	84	0
313505	119	0
313507	95	0
313511	366	18
313512#	0	0
313514#	131	0
<b>NJ Totals</b>	<b>9338</b>	<b>663</b>

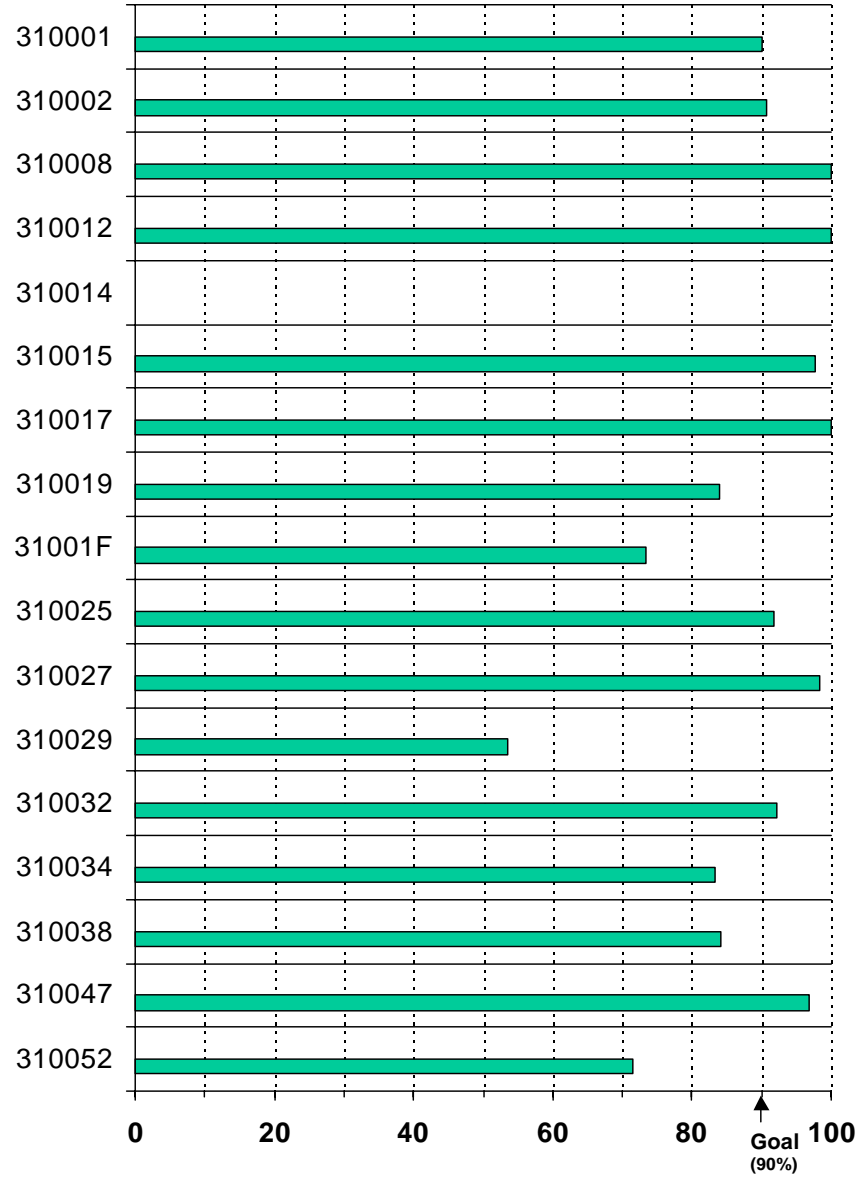
400007	1	0
400009	14	0
400013#	55	10
400021	0	0
400022	0	0
40003F	49	7
400044	1	0
400061	97	8
400118	16	15
402501	60	0
402502	64	1
402503	164	29
402504	166	19
402505	200	23
402506	64	0
402507	171	0
402508	193	29

<b>2002 Home Dialysis Goal Activity Profile</b>		
<b>Provider Number</b>	<b>Dialysis Caseload</b>	<b>Patients on Home Dialysis*</b>
402509	56	0
402510	145	42
402512	76	26
402513	108	17
402514	135	0
402515	101	0
402516	72	3
402517	148	27
402518	135	16
402519	114	20
402520	125	7
402521	78	0
402522	0	0
402523	0	0
402524	0	0
402525	69	0
402526#	4	4
402527#	45	0
402528#	87	22
402529#	31	0
402530#	368	92
402531#	71	6
402533#	69	0
403301	14	3
<b>PR Totals</b>	<b>3366</b>	<b>426</b>
480001	61	0
480002	75	0
<b>USVI Totals</b>	<b>136</b>	<b>0</b>
<b>Network Totals</b>	<b>12840</b>	<b>1089</b>



### Goal Achievement in Federal Forms Submission Medical Evidence Reports

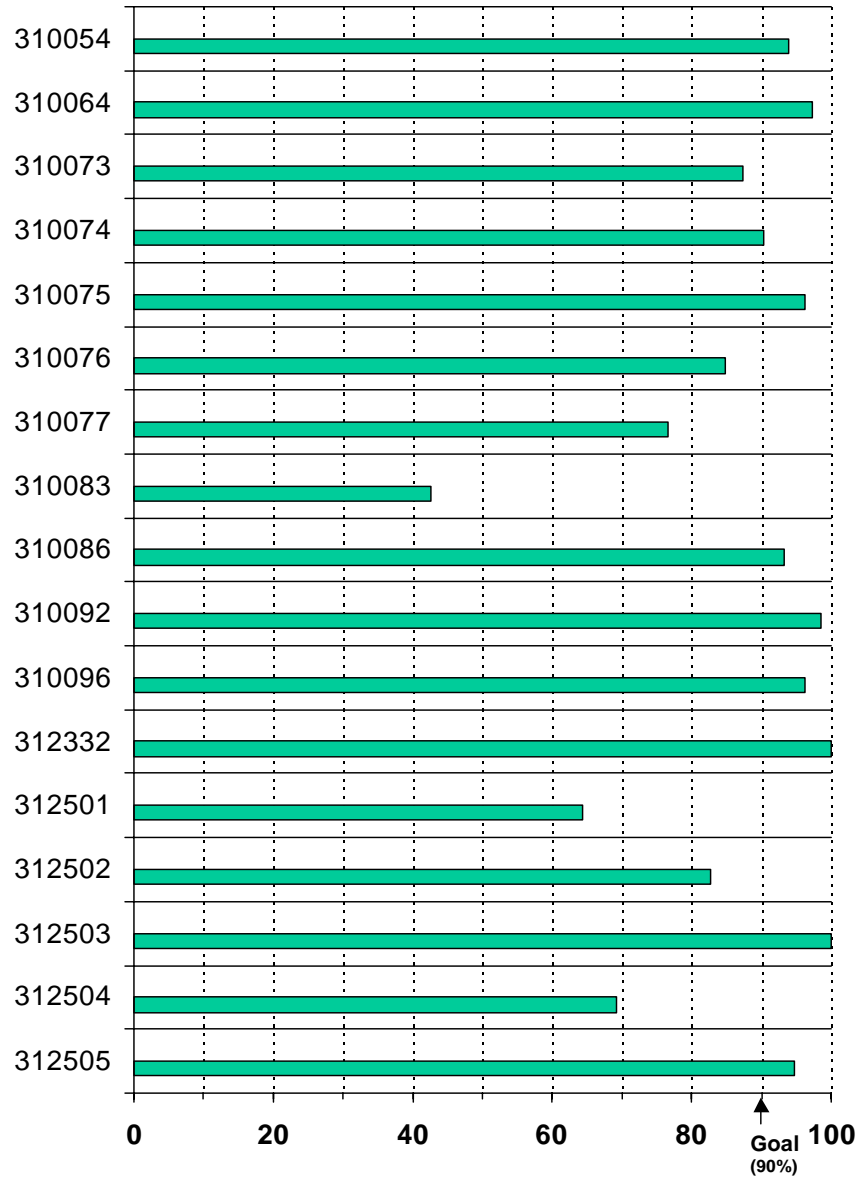
Facilities



Percent of Forms On Time

### Goal Achievement in Federal Forms Submission Medical Evidence Reports

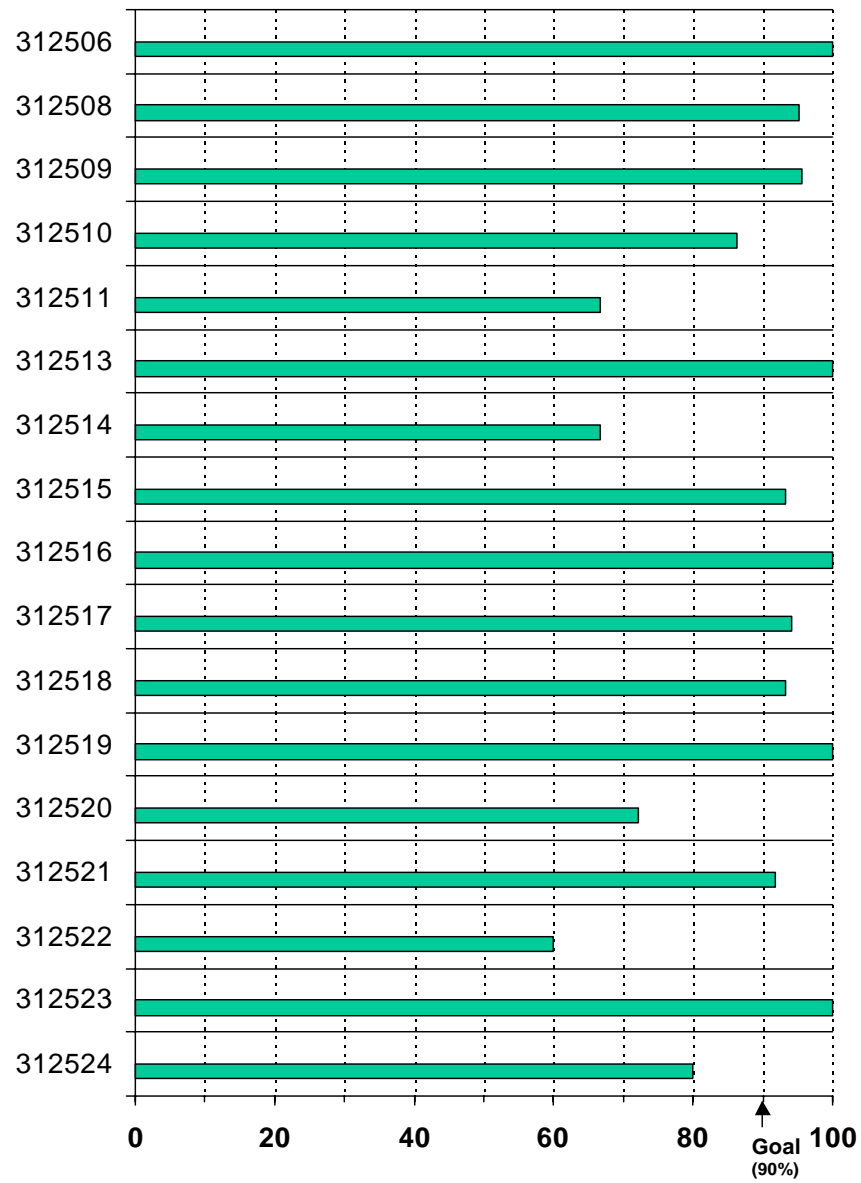
Facilities



Percent of Forms On Time

### Goal Achievement in Federal Forms Submission Medical Evidence Reports

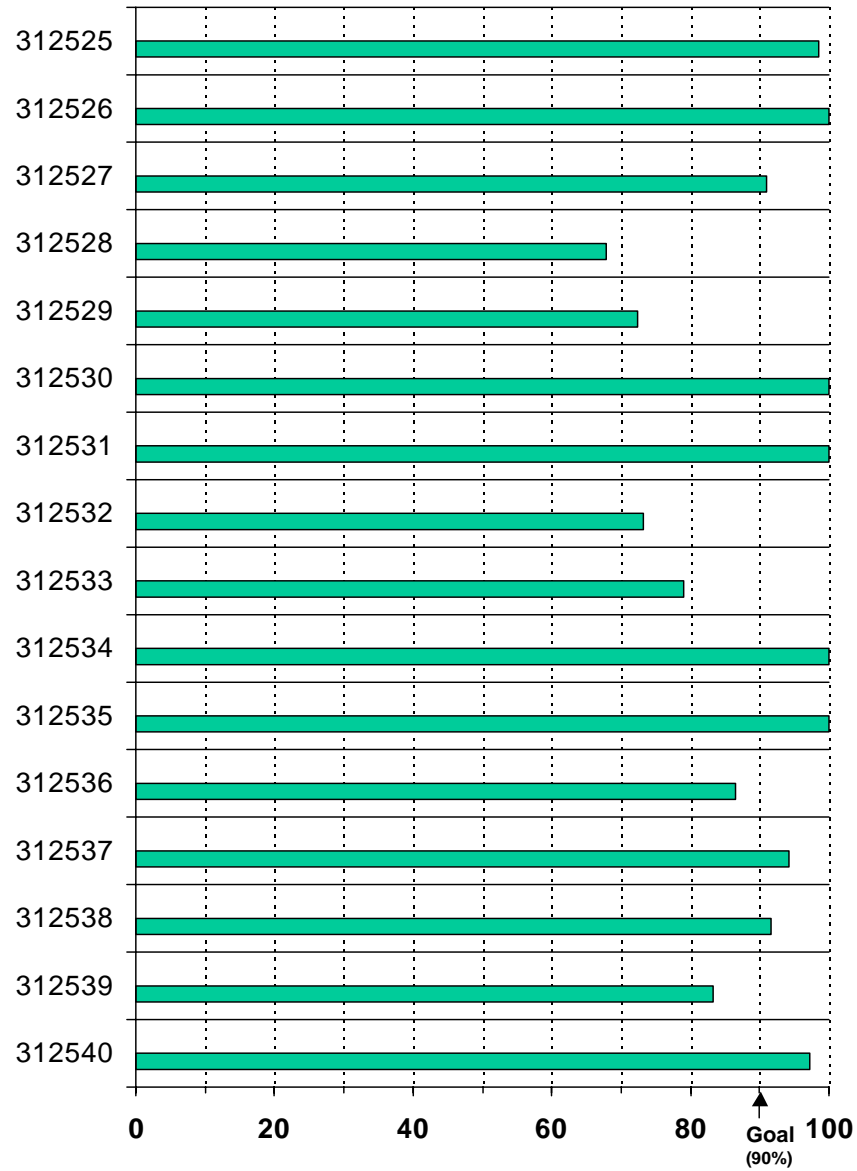
Facilities



Percent of Forms On Time

### Goal Achievement in Federal Forms Submission Medical Evidence Reports

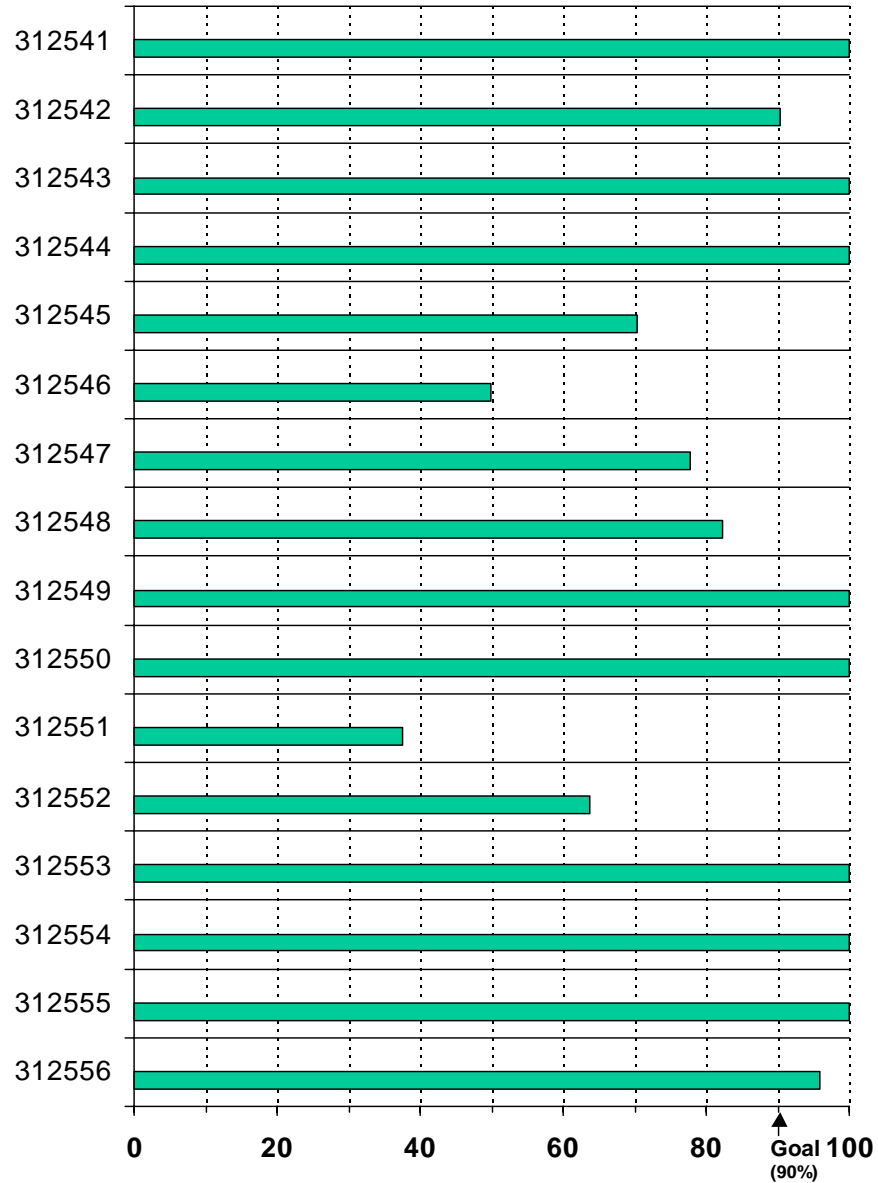
Facilities



Percent of Forms On Time

### Goal Achievement in Federal Forms Submission Medical Evidence Reports

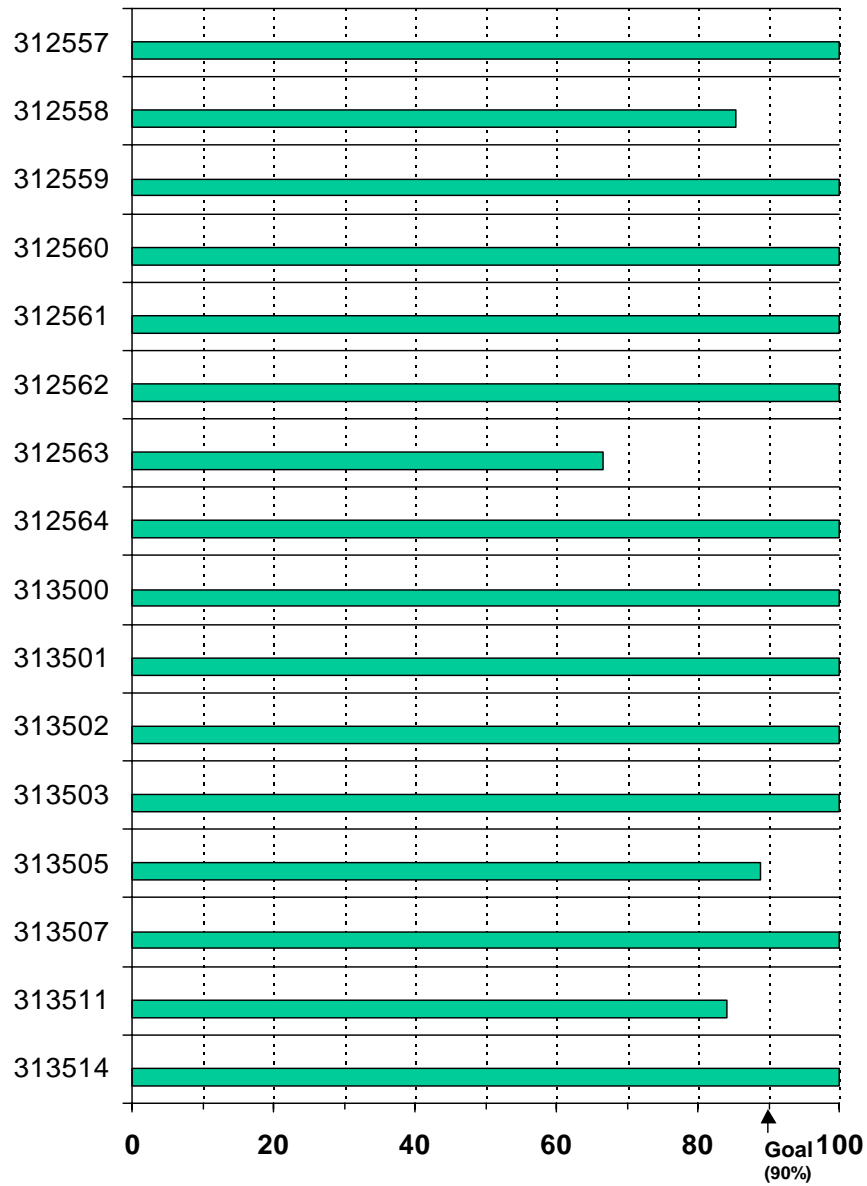
Facilities



Percent of Forms On Time

### Goal Achievement in Federal Forms Submission Medical Evidence Reports

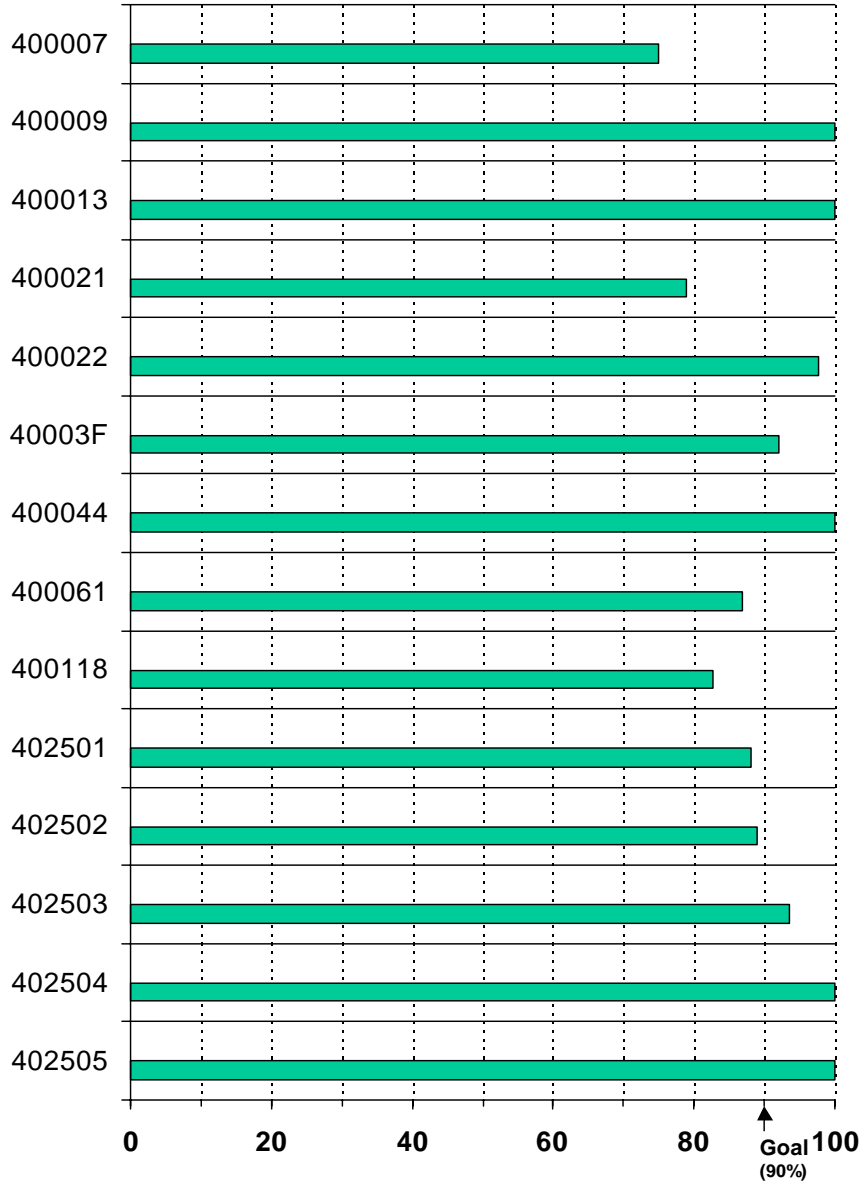
Facilities



Percent of Forms On Time

### Goal Achievement in Federal Forms Submission Medical Evidence Reports

Facilities



Percent of Forms On Time

### Goal Achievement in Federal Forms Submission Medical Evidence Reports

Facilities

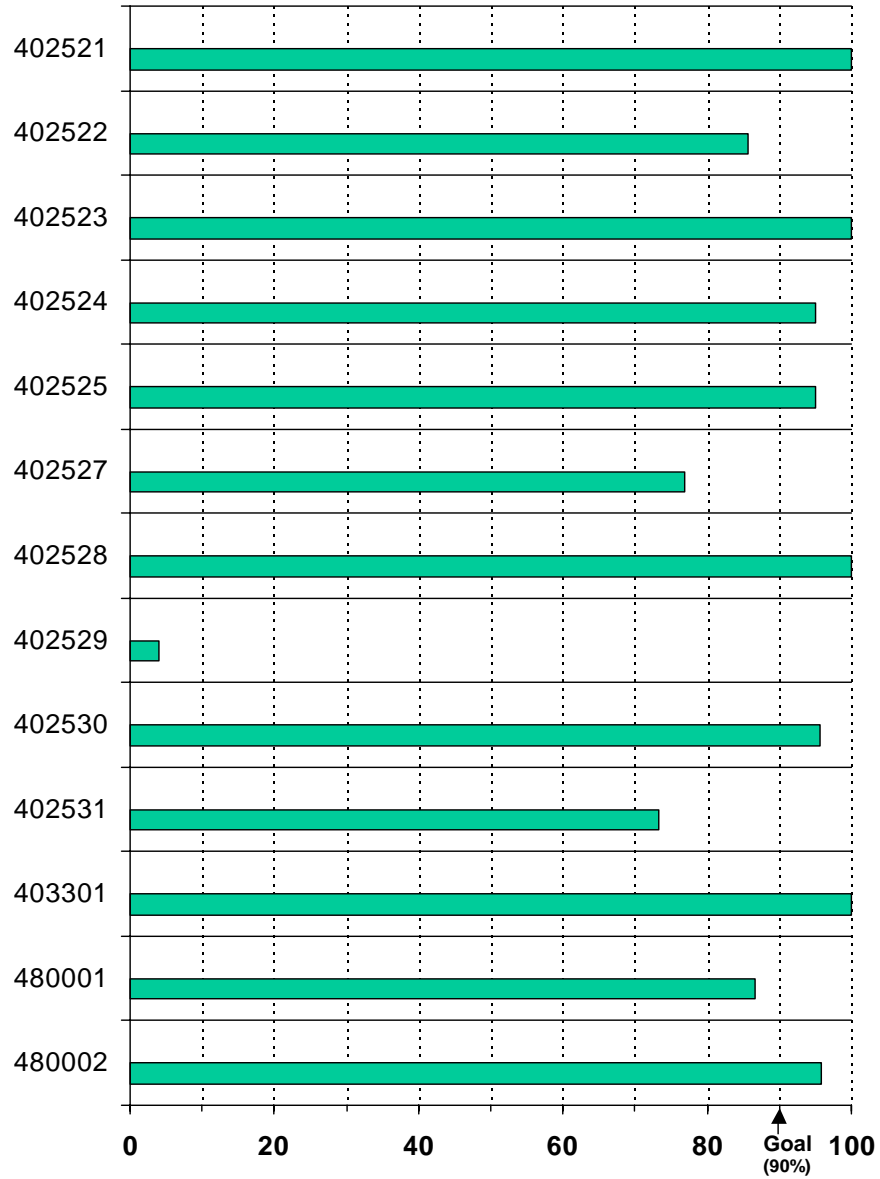


Percent of Forms On Time



### Goal Achievement in Federal Forms Submission Medical Evidence Reports

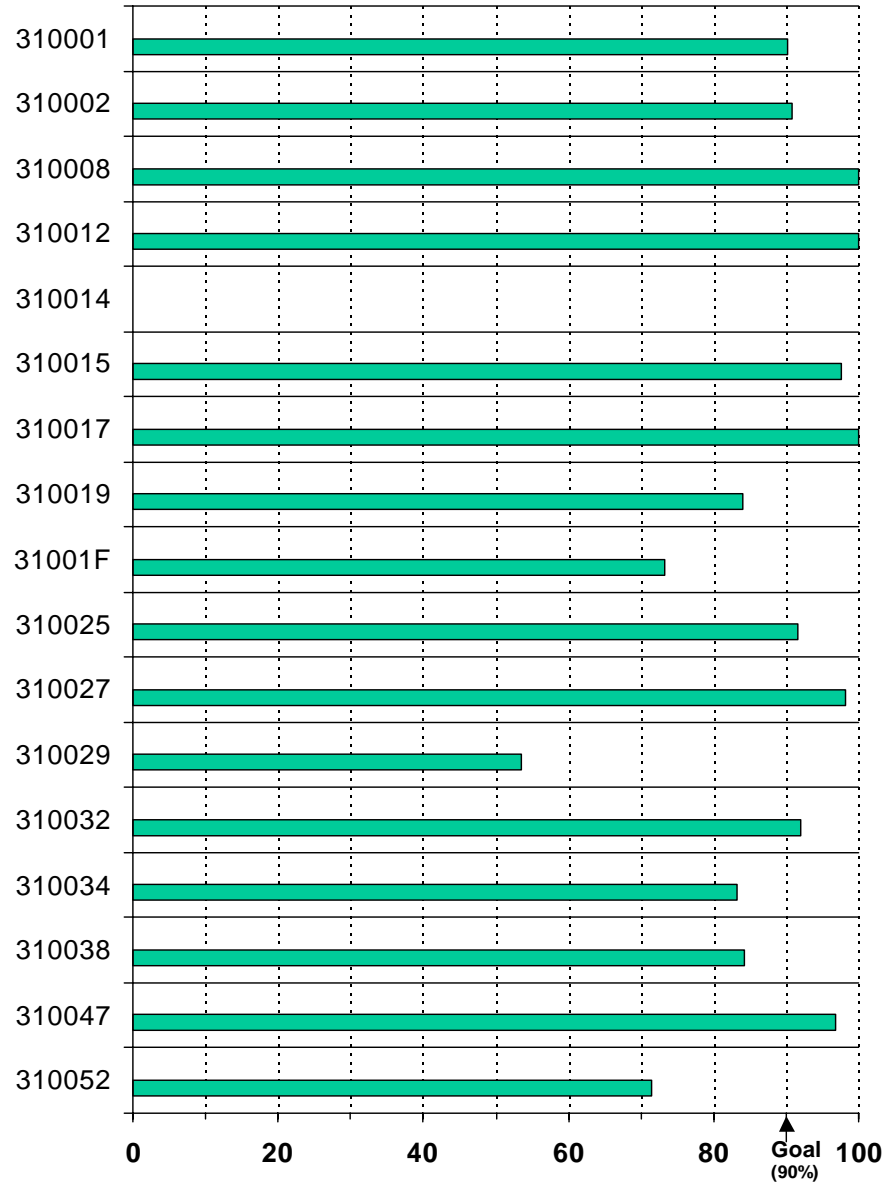
Facilities



Percent of Forms On Time

### Goal Achievement in Federal Forms Submission Death Notices

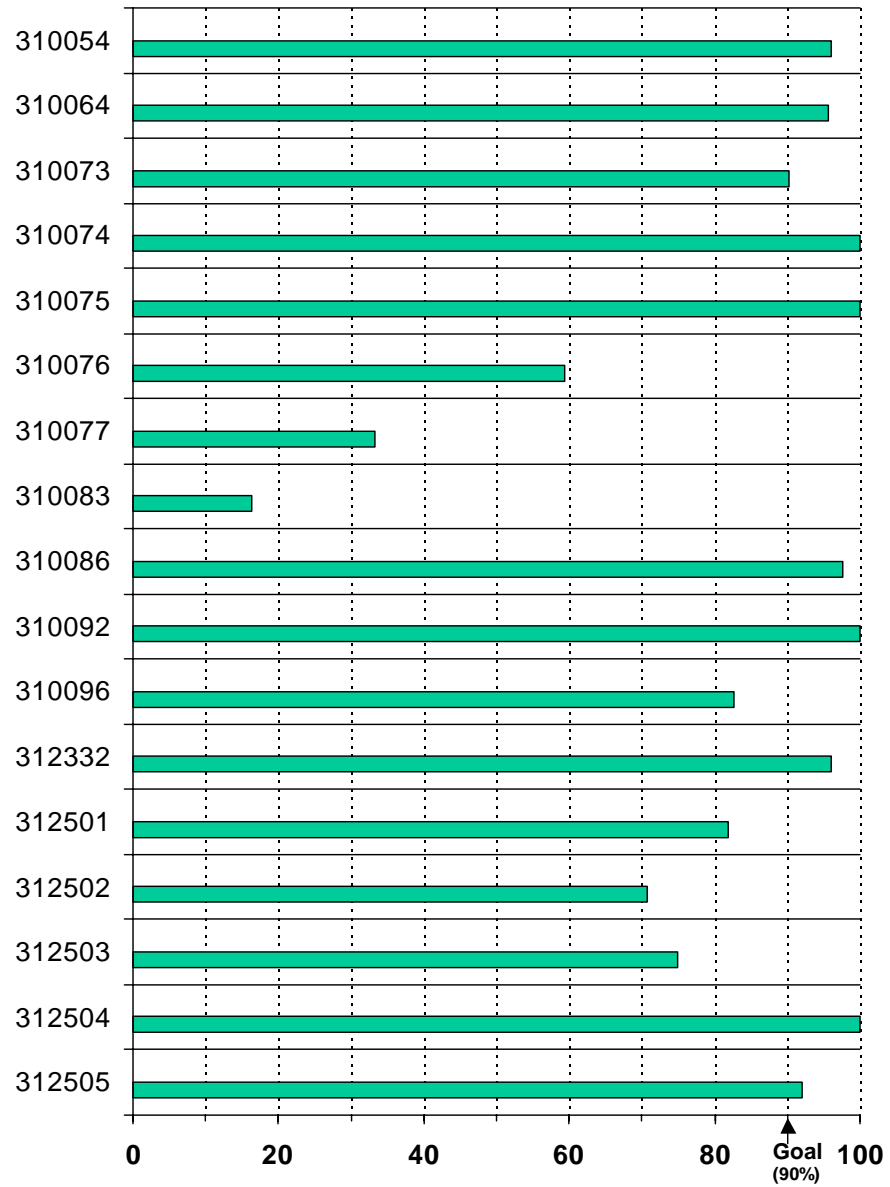
Facilities



Percent of Forms On Time

### Goal Achievement in Federal Forms Submission Death Notices

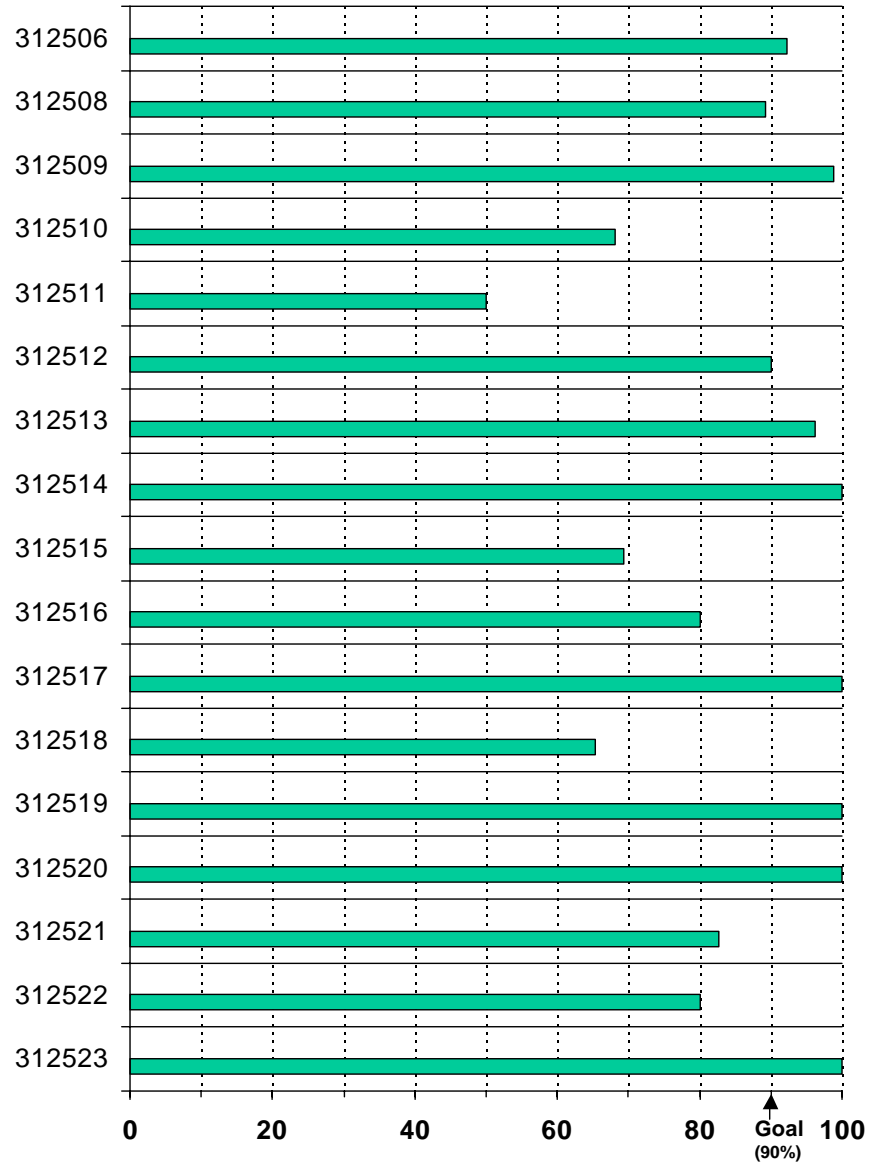
Facilities



Percent of Forms On Time

### Goal Achievement in Federal Forms Submission Death Notices

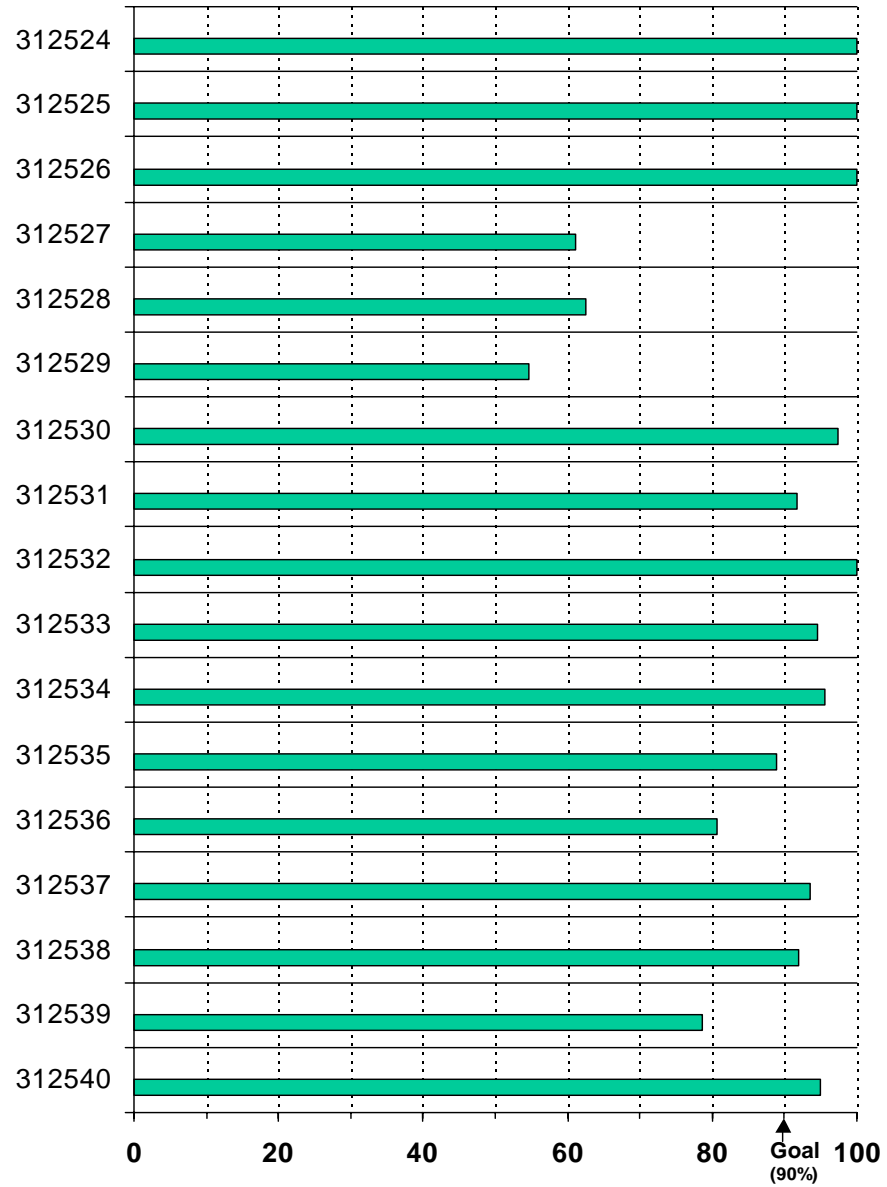
Facilities



Percent of Forms On Time

### Goal Achievement in Federal Forms Submission Death Notices

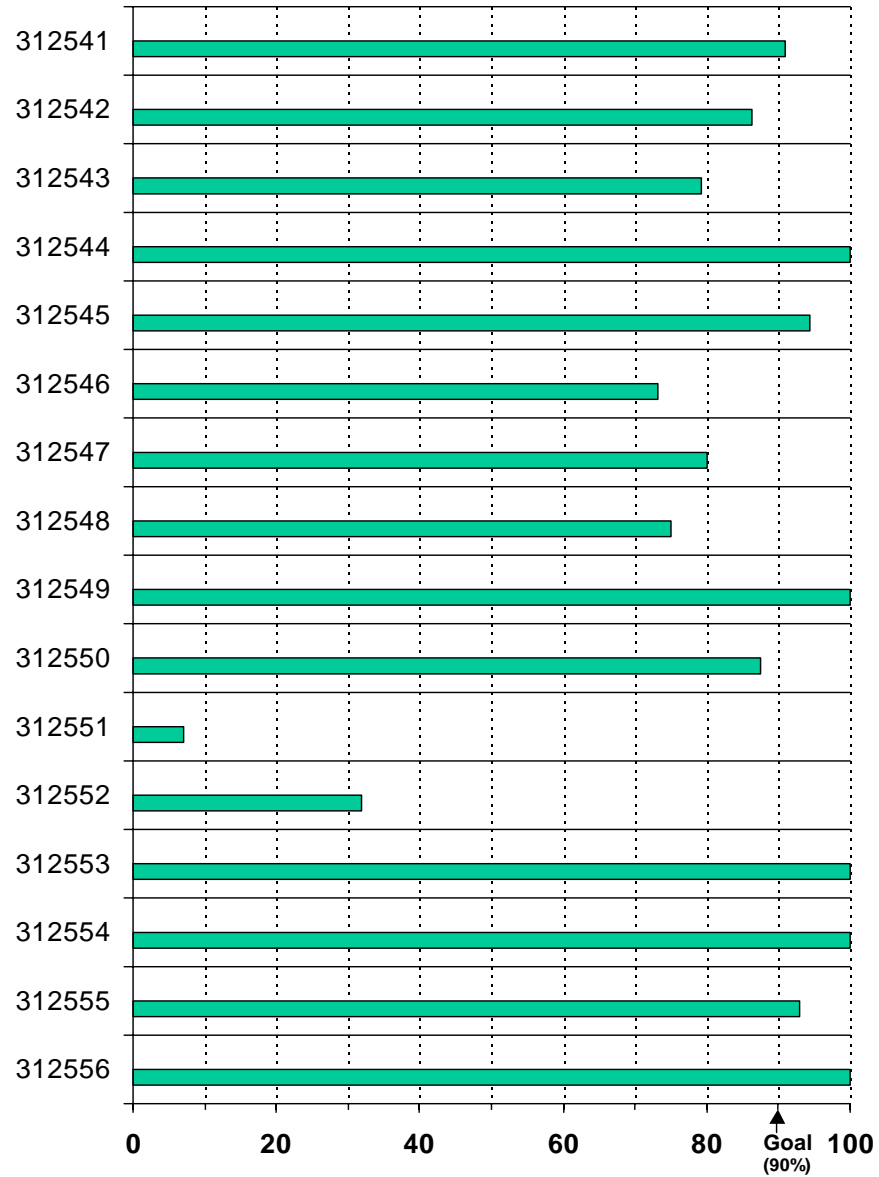
Facilities



Percent of Forms On Time

### Goal Achievement in Federal Forms Submission Death Notices

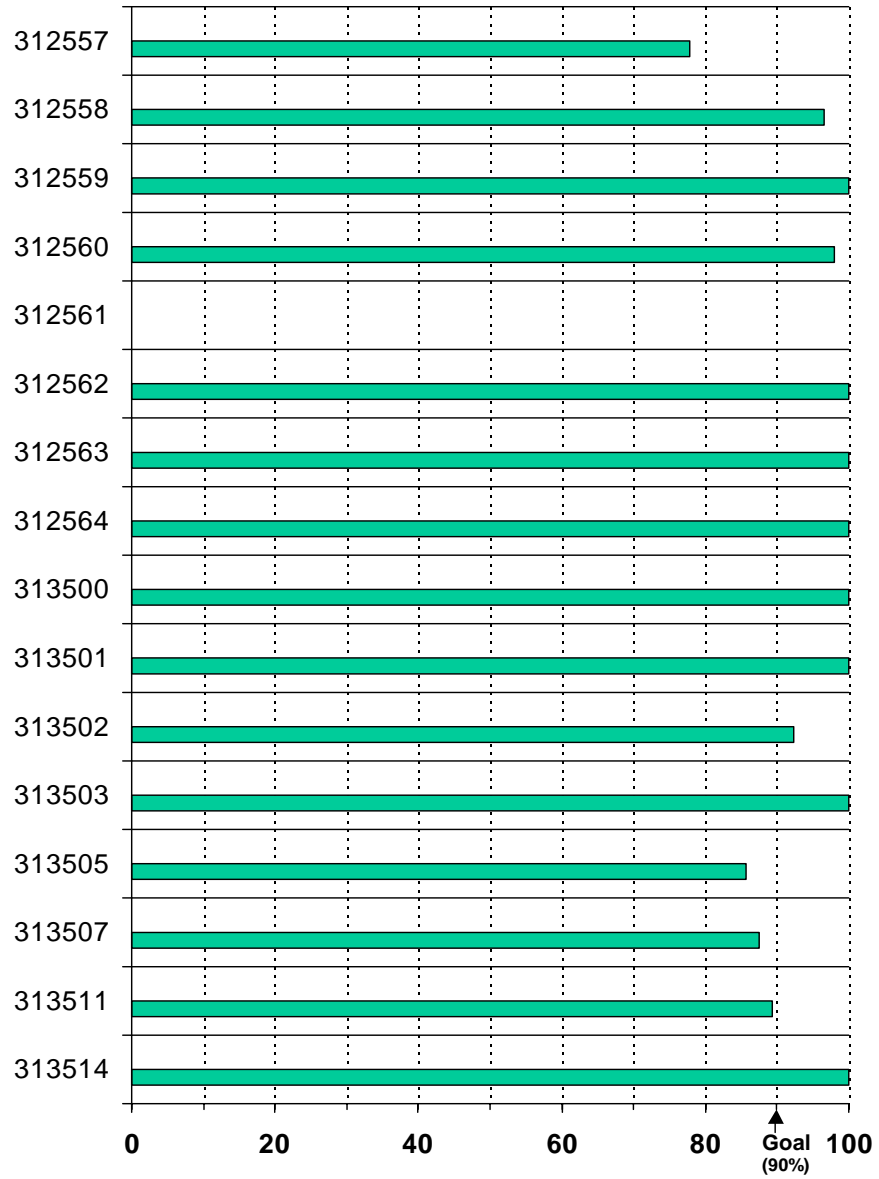
Facilities



Percent of Forms On Time

### Goal Achievement in Federal Forms Submission Death Notices

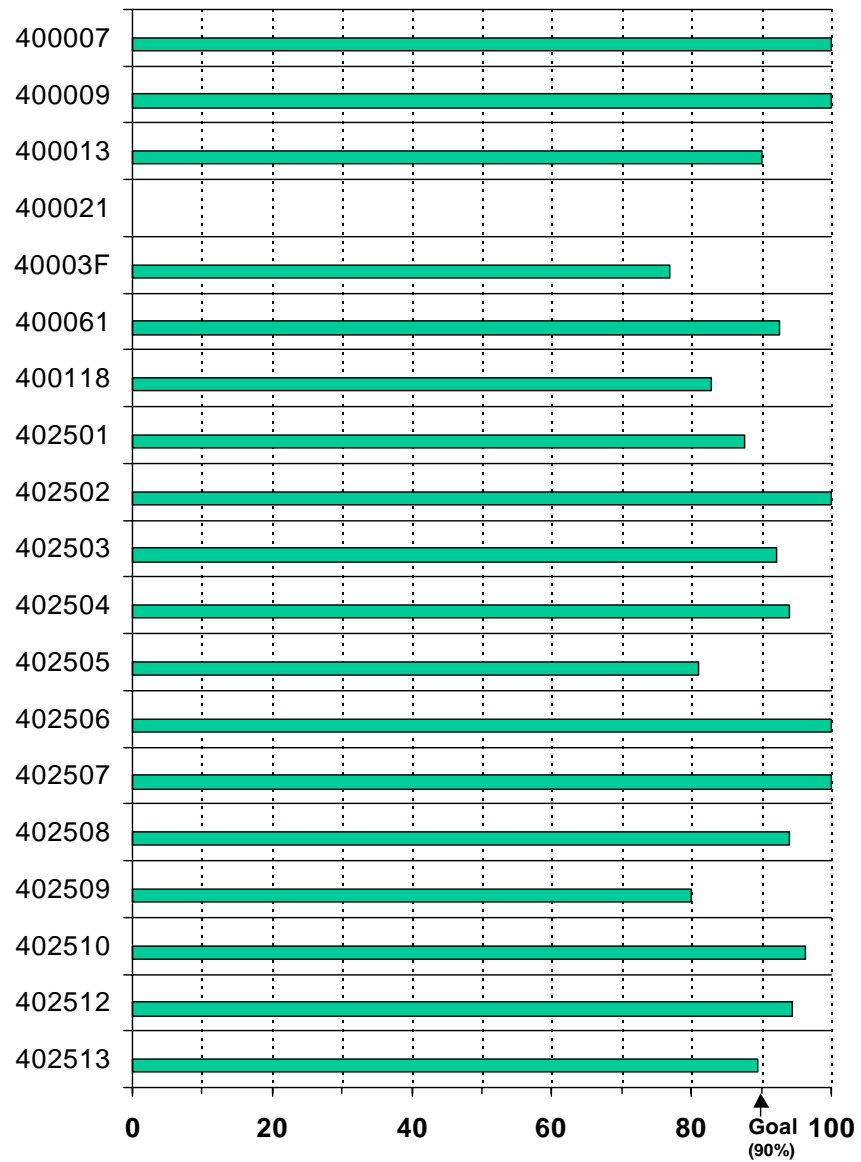
Facilities



Percent of Forms On Time

### Goal Achievement in Federal Forms Submission Death Notices

Facilities

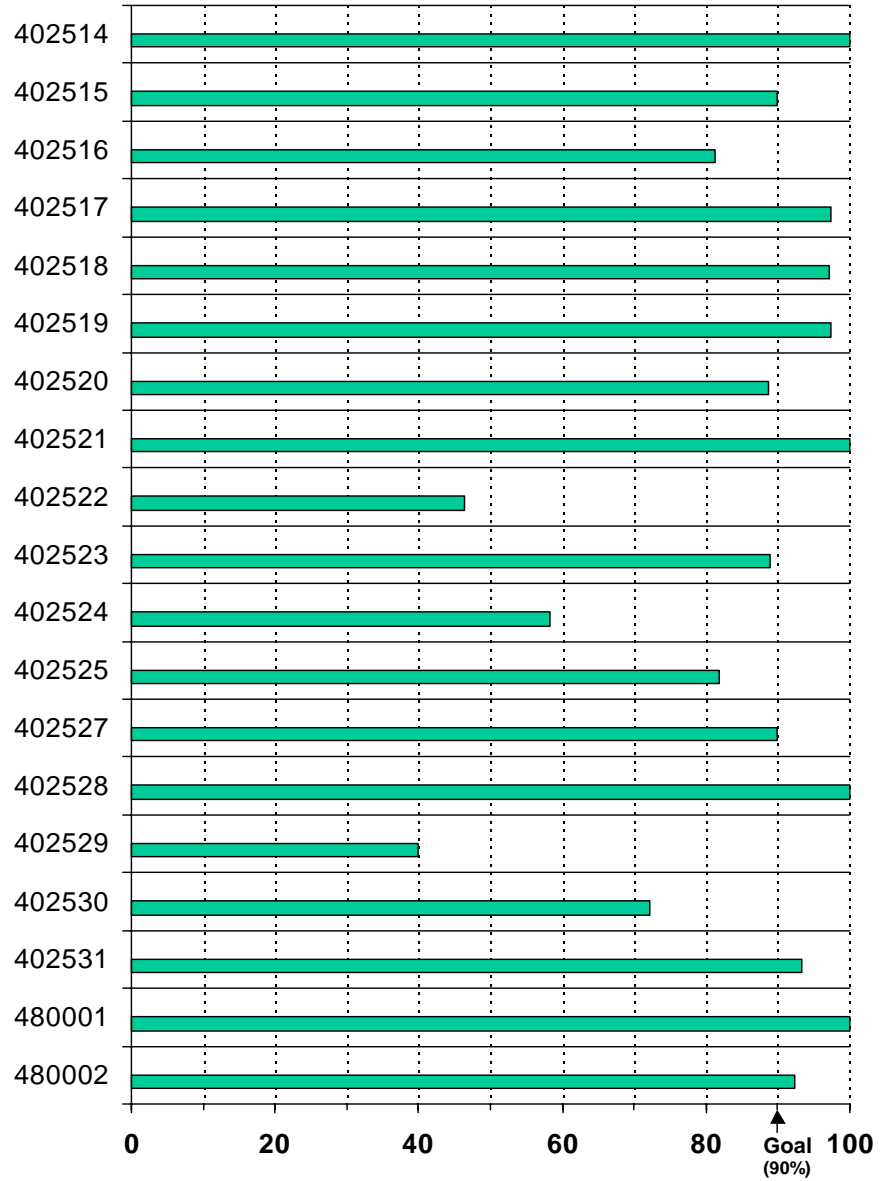


Percent of Forms On Time



### Goal Achievement in Federal Forms Submission Death Notices

Facilities



Percent of Forms On Time

## APPENDIX: DATA MANAGEMENT

The Trans-Atlantic Renal Council data entry system is based on current client/server and Internet technologies. Over the last year, there have been major improvements made to the reliability, performance, and capacity of the network. This system is designed to serve the various needs of the Trans-Atlantic Renal Council, and to provide the ability to adapt new technologies into the network quickly.

There is one Celeron computer, three Pentium II computers, seven Pentium III computers, two Pentium III laptops, two Pentium II servers, and one Pentium III server in this network. The Celeron runs at 500Mhz . One Pentium II system runs at 266Mhz, one runs at 333Mhz, and one runs at 400Mhz. Three Pentium III systems run at 500Mhz, two run at 733 Mhz, and the other two run at 866Mhz. The laptops run at 850Mhz and 933Mhz. Both Pentium II servers run at 333Mhz, and one has 256MB RAM, while the SIMS server has 384MB RAM. The Pentium III server runs at 1Ghz. Every computer has a minimum of 128MB RAM, however three have 256MB RAM, nine have 128MB RAM, and one has 384MB RAM, and the new server has 512MB RAM. The total hard disk capacity of the network exceeds 125 gigabytes.

The SIMS server runs Windows NT Service Pack 6a, and the other servers for the TARC network run Windows 2000 Server. Ten workstations and the two laptops run Windows 2000 Professional, and one workstation runs Windows 98.

The network connectivity is achieved using Cisco, 3Com, and Netgear network components for the central connectivity, while IBM, 3Com, and Intel network cards are used to provide workstation and server access. All critical information is stored on these servers, and all servers are backed up nightly using digital tape technology and on three digital tape drives. The SIMS server uses ArcServe 6.5 from Computer Associates, while the TARC server uses Veritas Backup Exec 8.5 Service Pack 1.

There are also three servers that are located at a remote secure hosting facility. These servers are used to host the TARC web site. The main web server is a Pentium III that runs at 500Mhz with dual processors, with 1GB RAM and 36GB of hard drive space, as well as its own digital tape backup system. The firewall is a Pentium III that runs at 800Mhz with 256MB RAM and a 60 GB hard drive for logging. The firewall server also runs a variant of the Slackware Linux operating system. The web server runs a secured version of Microsoft Windows NT 4.0 Service Pack 6a as its operating system. In addition, there is a security server that handles authentication of users for the QIP project. It is a Pentium III that runs at 866Mhz with 256MB RAM and a 4.3GB HD. This server also runs Windows NT Server 4.0, Service Pack 6a, and is on its own private network. It also runs RSA ACE/Server 4.2 for secure authentication using SecurID tokens.

There is one dedicated phone system computer. This is a 486 running DOS 6.2 that is not connected to the network. It only handles voicemail and the fax line, and it runs specialized phone system software. The computer has its own monitor, power system, and dedicated tasks.

There are five printers currently on the network. Four of them have their own network connections, while one of them is shared through a computer. The Hewlett-Packard Deskjet 4050N color laser printer, Lexmark Optra S1855, Hewlett-Packard Laserjet 8000DN, and Hewlett-Packard Laserjet 1100 are all utilized. Access is arbitrated to them through the file and database server using Windows NT permissions. The Costar label printer is run through a workstation; it is used to print mailing labels. The printers are assigned by geographic location in the office, and also by demand of users based on job size. They are entirely capable of handling the job throughput of the users, and the large amount of reports that the network generates.

All computers and servers have uninterruptible power supply devices. These allow for the shutdown of computers in case of a blackout and provide additional power in the case of a brownout. Their main purpose is to provide power for the computers when the standard power is unreliable.

This year, more Internet technology was added via the augmentation of the TARC web server. This provides TARC with the ability to provide consumer information, facility statistics, and report information to all facilities that have secure access to the Internet, as well as to the ESRD community. This year's augmentations allowed us to greatly expand the number of users that can be accommodated on the web site at any given time.

Future plans for the network include further integration of Internet technologies using SIMS and extensions.

All Internet connectivity is handled through a direct connection mandated by CMS using a private leased line connection to the government network, FTS 2001, which is run by Worldcom.

Most administrative tasks were accomplished using the Microsoft Office 97 and Office 2000 suite of products. The applications used were Microsoft Word, Microsoft Excel, Microsoft Access, and Microsoft PowerPoint. Another part of Office, Microsoft Outlook, is being used for electronic mail and in a scheduling/contact capability. All accounting is done in MIP NPS PRO Non-Profit Accounting For Windows, version 4.3. All information is standardized, and all incoming information is standardized. This allows for seamless sharing of resources. TimeClock Lyte is the electronic version of the standard time clock that every employee is required to use. This program itself is based on Microsoft Access.  
Reporting and Statistical Analysis

Maintenance of the network's data is handled by the combination of SIMS and Microsoft SQL Server 2000 to handle the data, and Microsoft Access to generate reports on the data. Statistical analysis is done using StatMost, SAS, and Access. All presentations were prepared using PowerPoint. Internal data review uses Access, Excel, and Word, as well as a custom reporting system called TARCtrac that utilizes over 100,000 lines of SQL code to analyze and report on trends in data using Microsoft SQL Server 7.0 and Microsoft SQL Server 2000.

### System Administration

Windows 2000 Server is used to administer the network, assign user passwords, manage printers, grant access to files, and manage the organization of all data. Backup Exec from Veritas Software is used to back up all data on the network, as well as several workstations onto two digital tape drives. For the web servers, a custom version of Linux is used for the firewall software, and Windows NT Server/Internet Information Server is used to serve web pages.

In addition, RSA ACE/Server, which sits on top of Windows NT Server on the web network, is used for security and authentication.

## REFERENCES

1. US Bureau of Census, *Statistical Abstract of the United States: 2001*, 121<sup>st</sup> edition, Washington, DC, 2001.
2. Health Care Financing Research Report, *End-stage Renal Disease, 1992*. Department of Health and Human Services, Health Care Financing Administration, Baltimore, MD, HCFA Publication #03328. September 1994.
3. Rettig, R. and Levinsky, N., Editors, *Kidney Failure and the Federal Government*, National Academy Press, Institute of Medicine, Washington, DC, 1991
4. U S Renal Data System, *2001 Annual Data Report*, National Institutes of Health, NIDDK, 2001.
5. Feldman, H., Klagg, M., Chiapella, A.P., Whelton, P., "End-stage Renal Disease in U.S. Minority Groups," *American Journal of Kidney Diseases*, Vol. XIX #5, May 1992.
6. New Jersey Department of Labor, *A Census '90 Portrait of New Jersey* (Summary of the Twelfth Annual New Jersey State Data Center Conference), October 1991.
7. General Accounting Office Testimony before Select Committee on Aging, House of Representatives. "DIABETES, Status of the Disease Among American Indians, Blacks and Hispanics." GAO/T-PEMD-92-7, April 6, 1992.
8. Saade, Marien, MSN, CNN. Life Link of Puerto Rico. Private correspondence, June 7, 2001.
9. McKeown, Gerry. The Sharing Network. Private correspondence, April 10, 2001.
10. Nathan, Howard. The Gift of Life Donor Program. Private correspondence, May 25, 2000
11. Albanese, Lorelei, "Pace of new jobs increases little in '97," *San Juan Star*, April 21, 1998, p. 81.
12. "US Virgin Islands History", Microsoft. Online. Available at [www.expedia.msn](http://www.expedia.msn)
13. "Virgin Islands: Transportation," USA Immigration Software. Online. Available at [www.theodora.com](http://www.theodora.com)
14. "Virgin Islands: Economy," USA Immigration Software. Online. Available at [www.theodora.com](http://www.theodora.com)
15. "Virgin Islands: People," USA Immigration Software. Online. Available at [www.theodora.com](http://www.theodora.com)
16. "Virgin Islands: Geography," USA Immigration Software. Online. Available at [www.theodora.com](http://www.theodora.com)
17. Shimel, Judith and Business Journal staff. "Incinerators, landfills and the FAA: Off-island garbage cay sought," *Virgin Islands Business Journal*, September 5, 1997. Online. Available at [www.vibj](http://www.vibj).
18. NJ Department of Labor, Annual Demographic Profile for New Jersey. Online. Available at [www.njpin.state.nj.us/onestopcareercenter/labormarketinformation/htm](http://www.njpin.state.nj.us/onestopcareercenter/labormarketinformation/htm).

19. NJ Department of Health and Senior Services, Division of AIDS Prevention and Control, "New Jersey HIV/AIDS Quarterly Newsletter," December 31, 1999. Online. Available at [www.state.nj.us/health/aids](http://www.state.nj.us/health/aids).
20. NJ Department of Labor, Division of Labor Market and Demographic Research, "1998 New Jersey State and County Population Estimates by Age, Race, Sex and Hispanic Origin," New Jersey *Economic Indicators*, September 1999.
21. US Bureau of the Census, International Database, Table 094, "Midyear Population by Age and Sex: Virgin Islands/1999." Online. Available at [www.census.gov/cgi-bin/ipc/idbagg](http://www.census.gov/cgi-bin/ipc/idbagg).
22. US Environmental Protection Agency, Office of International Activities, "A Report on the State of the Islands," Chapter 5: US Virgin Islands. Online. Available at [www.islands.vi/~arnoldvb/chapter5.htm](http://www.islands.vi/~arnoldvb/chapter5.htm).
23. US Bureau of the Census, International Database, "Summary Demographic Data for Puerto Rico." Online. Available at [www.census.gov/cgi-bin/ipc/idbsum?cty=RQ](http://www.census.gov/cgi-bin/ipc/idbsum?cty=RQ).
24. Centers for Disease Control and Prevention, National Center for Health Statistics, National Vital Statistics System, "Number of deaths, death rates and age-adjusted death rates for major causes of death for the United States, each division, each state, Puerto Rico, Virgin Islands, Guam and American Samoa, 1997." Online. Available at [www.cdc.gov/nchswww/data/nvs47\\_19.pdf](http://www.cdc.gov/nchswww/data/nvs47_19.pdf).
25. Division of Tuberculosis Elimination, Centers for Disease Control and Prevention. Provisional data for 1999. Final data for 1998.
26. The Washington Times: A Special International Report, September 29, 1999. Online. Available at [www.washtimes.com/internatlads/puertorico99/16.html](http://www.washtimes.com/internatlads/puertorico99/16.html).
27. GSA Center, US Geological Center, "Island hydrology: Puerto Rico and the US Virgin Islands." Online. Available at <http://pr.water.usgs.gov/public/webb/webb010.html>.